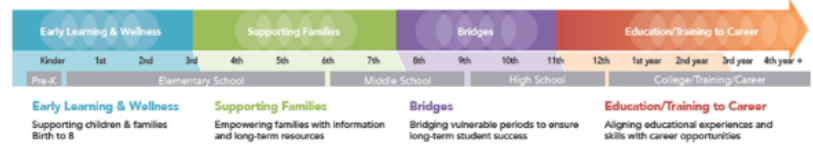
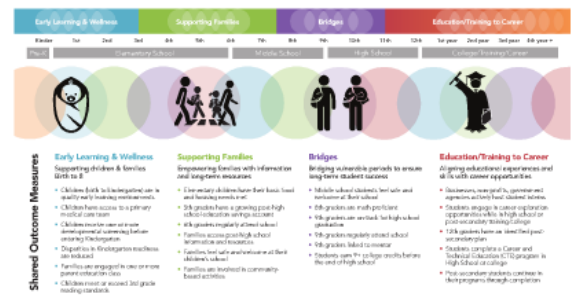
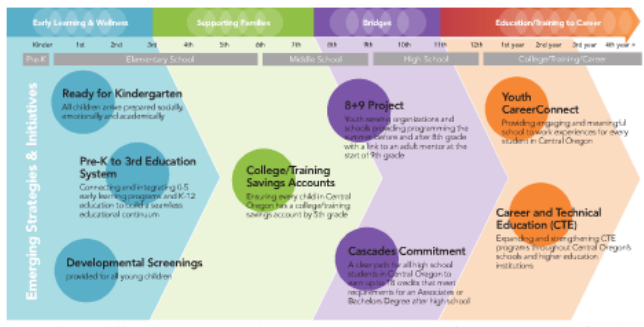


Regional Achievement Collaboratives

OIEB Supports Regional P-20 Efforts



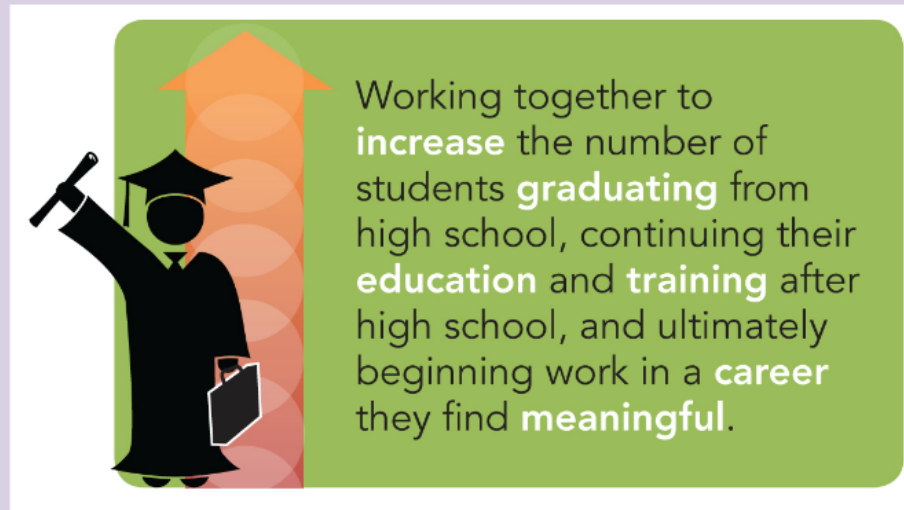
Cradle to Career Backbone Organization





Central Oregon's collective effort
to improve child and youth outcomes
from cradle to career

Create a Culture of Higher Education



Oregon Community Foundation

Volunteer Working Board Gathers to Create a Culture of Higher Education in Central Oregon

Oversight Committee: (provides day-to-day operational support and direction)

- Professional Grant Writer
- Higher Education
- Private Foundation
- ESD & K-12
- Early Learning
- Private Sector CEO



Steering Committee:

(provides broad guidance and critical decision-making authority)

- School District + ESD Superintendents
- Non-Profit Executive Directors
- CEOs

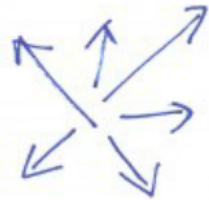
OLD/CURRENT BEHAVIOR

DISORDER + CONFUSION



Inconsistent quality and sporadic accountability perpetuate poor results with some pockets of excellence.

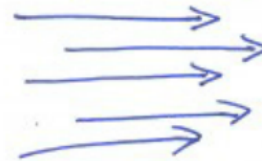
ISOLATION



Individual pockets of excellence operate disconnected from one another with little ability to scale results. "Everyone for everything."

NEW BEHAVIOR

ALIGNMENT



Shared ideas and goals begin to galvanize partners and shared aspirations inspire repurposed budgets and "random acts of partnership"

COLLECTIVE IMPACT



Collaborative action rooted in shared responsibility and accountability using aligned budgets; work plans and measurements are understood by all partners and the community.

Collective Impact



YouTube

Cradle to Career Backbone Organization



Anchor Entity

The anchor entity is established with two key staffing roles in place: project director and data manager.

Coordinator for Student Success
Shared Data Analyst

StriveTogether

Every child. Cradle to career.

all hands raised



Education, Equity and Excellence
from Cradle to Career

StriveTogether

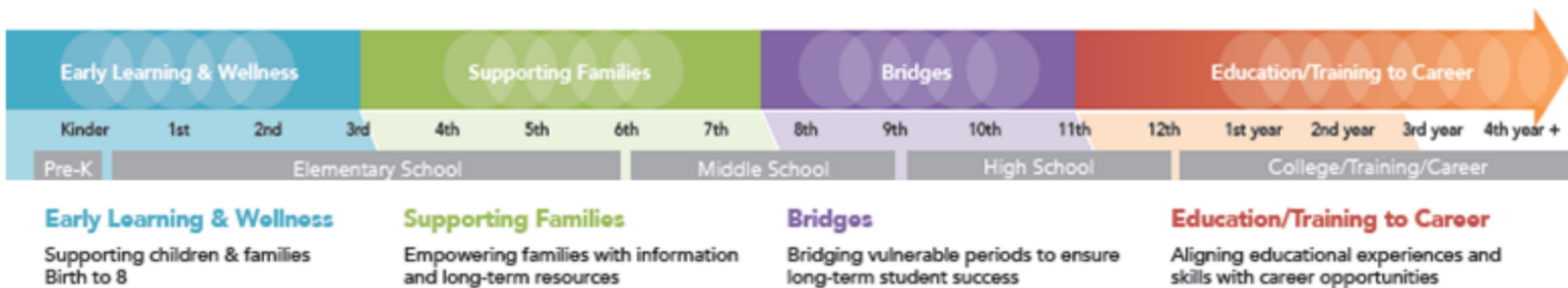
Every child. Cradle to career.



StriveTogether

YouTube

collective effort
and youth outcomes
career



Cradle to Career

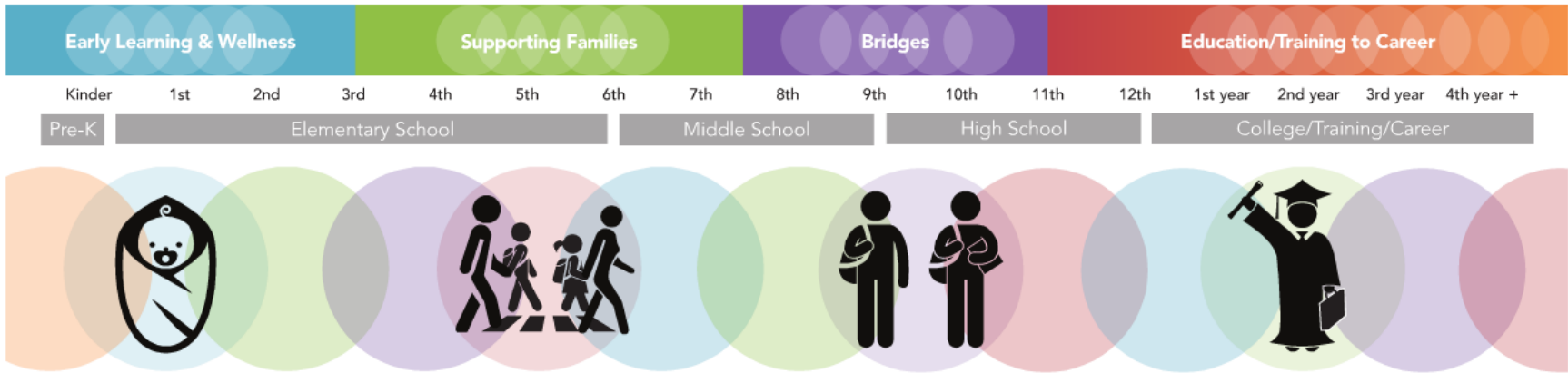
Cross-sector, Regional Partner Engagement





**Regional
Achievement
Collaboratives**

**OEIB Supports
Regional P-20
Efforts**



Shared Outcome Measures

Early Learning & Wellness

Supporting children & families
Birth to 8

- Children (birth to kindergarten) are in quality early learning environments
- Children have access to a primary medical care team
- Children receive one or more developmental screening before entering Kindergarten
- Disparities in Kindergarten readiness are reduced
- Families are engaged in one or more parent education class
- Children meet or exceed 3rd grade reading standards

Supporting Families

Empowering families with information and long-term resources

- Elementary children have their basic food and housing needs met
- 5th graders have a growing post-high school education savings account
- 6th graders regularly attend school
- Families access post-high school information and resources
- Families feel safe and welcome at their children's school
- Families are involved in community-based activities

Bridges

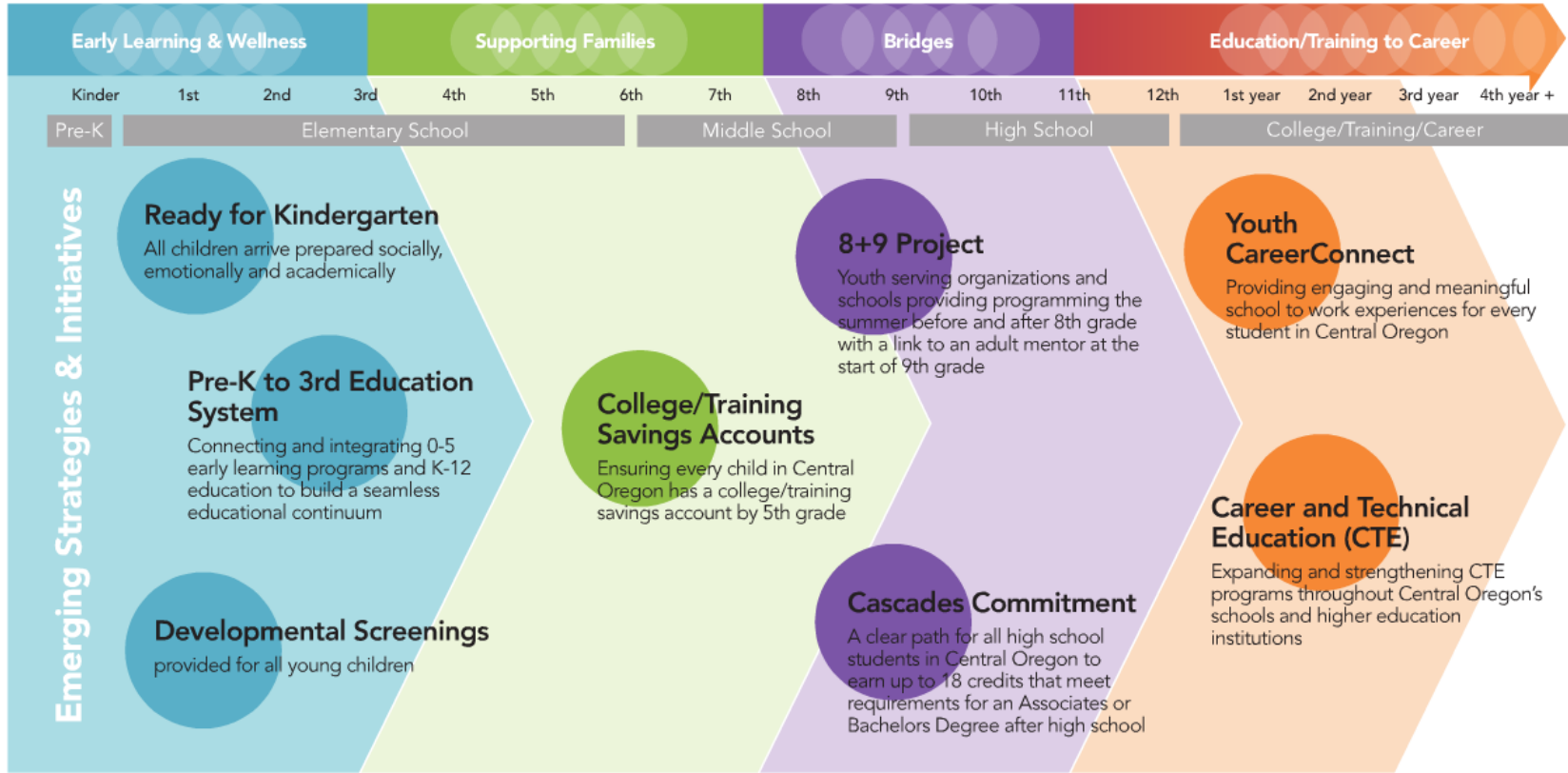
Bridging vulnerable periods to ensure long-term student success

- Middle school students feel safe and welcome at their school
- 8th graders are math proficient
- 9th graders are on-track for high school graduation
- 9th graders regularly attend school
- 9th graders linked to mentor
- Students earn 9+ college credits before the end of high school

Education/Training to Career

Aligning educational experiences and skills with career opportunities

- Businesses, non-profits, government agencies actively host student interns
- Students engage in career exploration opportunities while in high school or post-secondary training/college
- 12th graders have an identified post-secondary plan
- Students complete a Career and Technical Education (CTE) program in High School or college
- Post-secondary students continue in their programs through completion



Partners: Education (K-12 school districts, High Desert ESD, COCC, OSU-Cascades & Open Campus) • Business /Service Clubs • Early Learning Professionals • Government Agencies • Nonprofits & Foundations