



# Home of the Huskies

## Contact Us

65912 High School Loop  
Moro, OR 97039

541-565-3500  
[www.sherman.k12.or.us](http://www.sherman.k12.or.us)

## Apply Now!

Please visit the school website for an application packet.



# 2023-24 Sherman County School K-12 Administrative Employment Opportunity

WORKING TOGETHER TO PUT  
STUDENT SUCCESS FIRST!

# K-12 Principal

## LEAD THE WAY ~ A Dedicated Team

Sherman County School is seeking a team-oriented leader that fosters a positive school culture to join our friendly, inviting and dedicated team. The principal is the instructional leader of our comprehensive K-12 school, responsible for establishing an instructional vision and a focused plan for improving student achievement; monitoring and supervising instruction; evaluating and supporting teachers in improving their instructional practice; creating a community of continuous learning for all staff and students; and fostering a culture of high expectations.

This leader must demonstrate skillful leadership and work cooperatively with a dedicated staff and engaged community; be a leader who participates in the life and activities of the school community; possess excellent communication skills; exhibits dynamic leadership qualities; as well as demonstrates personal and professional honesty and integrity. The successful candidate must rely on experience and judgment to plan and accomplish goals to lead and direct the work of others alongside a supportive board and superintendent in an environment that promotes staff creativity for student success. A wide degree of creativity and latitude is expected.

The current K-12 Principal was recently promoted to Superintendent. This will provide a seamless transition for the candidate selected for the K-12 Principal position.

## OUR VISION ~ Sherman Strong

1. We believe that strong student/staff relationships foster improvements in academics, citizenship and attitude.
2. We believe that positive community support, involvement and generosity are critical to student success.
3. We believe that the employees of the Sherman County School District have a united commitment in pursuit of the vision for academic and citizenship growth by all students.
4. We believe in providing a safe environment where the physical, social, emotional and academic needs of the students and staff can be met.
5. We believe that well-maintained facilities are an essential factor in providing a safe and accessible education to all.
6. We believe that our community and students deserve clean, safe, secure, well-equipped and inviting facilities of which to be proud.

## OUR MISSION ~ Student Centered

Sherman County Schools, in partnership with its community citizens, will provide all students with an education which produces responsible and informed citizens, able to adjust, grow, and make positive contributions to a rapidly changing world.

## SALARY & BENEFITS ~ Robust Compensation

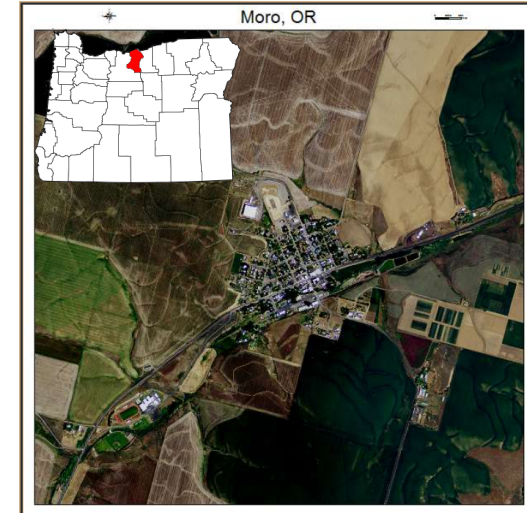
Competitive salary dependent upon education, endorsements, and experience. Plus a generous benefit package. Co-curricular stipend opportunities are available if interested.



# Meet Our Community

## SHERMAN COUNTY ~ A Hidden Gem

Sherman County is a rural agricultural community with the added economic development provided by the Strategic Investment Program Funds (wind energy). It is located in north central Oregon between the John Day River on the east and the Deschutes River on the west. The Columbia River forms the boundary to the north. Much of the southern boundary is defined by the canyons of Buck Hollow creek, a tributary of the Deschutes. Sherman County enjoys four distinct seasons. Summers are warm, dry and clear. Winters are relatively mild; heavy snowfall is uncommon. The county is relatively small, with only 831 square miles, it is approximately 20 miles wide and 42 miles long, elevations range from 185 feet along the Columbia River to 3,600 feet on the plateau in the south. There are six small towns: Biggs Junction, Rufus, Wasco, Moro, Grass Valley and Kent within the county line that house approximately 1800 residents. Sherman County residents enjoy a variety of outdoor activities including windsurfing, boating, hiking, hunting, fishing and camping.



Located in Moro, the school is a modern, comprehensive K-12 facility in a class of its own that opened in the fall of 2016. It is a clean and well maintained building with a unique safety plan in place to protect students and staff. A beautiful 7,000 square foot public/school library adjoins the school campus. Technology is well integrated into the curriculum. Chromebooks, high speed internet, interactive video, online classes and video-on-demand services are all available to support and augment instructional programs. The School enjoys an all-weather track facility, three spacious gymnasiums, beautiful baseball field, and new tennis courts.

Sherman County School is one of Oregon's best kept secrets. It is the heart and soul of the community with strong family values. Community support, staff dedication, and an incredible student body (approx. 275) are unparalleled. The school district is fortunate to have a solid local funding base comprised of SIP funds, an Athletic Foundation, Education Foundation, and a robust scholarship program. Student support is enhanced with a comprehensive counseling department that includes a K-12 Counselor, Qualified Mental Health Professional, College and Career Counselor and a Student Success Coach.

