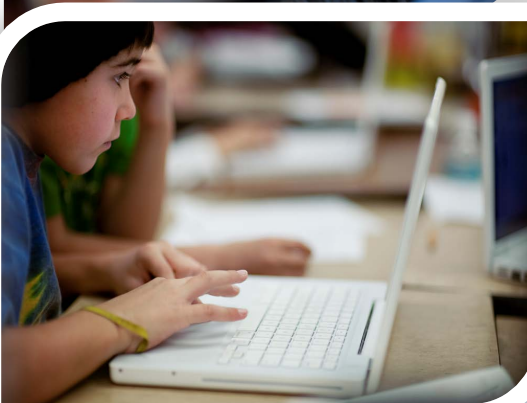


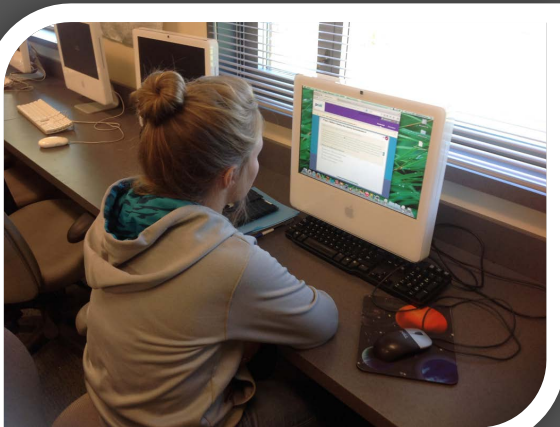
# Online Learning: World Class Opportunities for Oregon's Rural School Students

Bend-La Pine School District & Fuel Education



Presenters:

- Tres Tyvand | BLPSO, Student Services Coordinator
- Matt Montgomery | La Pine High School, Principal
- Jamie Gunter | La Pine High School, Educational Assistant
- Brian Whiteaker | Fuel Education



**BEND-LAPINE**  
*Schools*

520 NW Wall  
Bend, OR 97701



**E D U C A T I N G   T H R I V I N G   C I T I Z E N S**

## Program Overview: Tres Tyvand

Serve 27 schools, including 5 high schools

Serve grades Pre-K - 12

3,000 student enrollments SY 14-15

7,000+ course enrollments, K-12, SY 14-15

Wide variety of program offerings- blended,  
online, labs

Contract w/Fuel Ed for course and teachers



**BEND-LAPINE**  
*Schools*

520 NW Wall  
Bend, OR 97701



**EDUCATING THRIVING CITIZENS**

# Why Highlight LPHS?

- LPHS usage vs all other HS in district



**BEND-LAPINE**  
*Schools*

520 NW Wall  
Bend, OR 97701



**E D U C A T I N G   T H R I V I N G   C I T I Z E N S**

# La Pine High School Overview: Matt Montgomery



- 433 Students / 20.2 certified teachers
- 62% Free & Reduced Lunch
- 73% Gradation Rate
- 66% College Bound rate
- High-churn rate (transient population)



**BEND-LAPINE**  
*Schools*

520 NW Wall  
Bend, OR 97701



**E D U C A T I N G T H R I V I N G C I T I Z E N S**

## Who does the online lab serve? Matt

- Credit deficient students
- Course catalog expansion (small school)
- Late enrollment (mid-trimester)
- Seniors needing credits
- Scheduling challenges
- Staffing: who is a good fit?



**BEND-LAPINE**  
*Schools*

520 NW Wall  
Bend, OR 97701



EDUCATING THRIVING CITIZENS

# Student Voices



✓ LPHS Student Video



**BEND-LAPINE**  
*Schools*

520 NW Wall  
Bend, OR 97701



**EDUCATING THRIVING CITIZENS**

# La Pine High School Lab: Jamie Gunter

Overview of the lab environment

History in the job

How students are scheduled into the lab

Breakdown of usage:

CR: 175 half credits

Original Credit: 400



**BEND-LAPINE**  
*Schools*

520 NW Wall  
Bend, OR 97701



EDUCATING THRIVING CITIZENS



# La Pine High School Lab: Jamie Gunter

- What does a typical class period look like? Never sit down!
- Challenges
- Motivating students
  - Relationships
  - Parent communication
  - School site staff communication
  - Accountability
  - Availability/accessibility
  - SPED support/accomodation



**BEND-LAPINE**  
*Schools*

520 NW Wall  
Bend, OR 97701



**E D U C A T I N G   T H R I V I N G   C I T I Z E N S**



CONNECTING  
K-12 STUDENTS  
to a world of possibilities