

A Community Working Together to Close the Gap

A glance into how Roseburg is investing in Early Learning

Roseburg's Efforts

- Title 1 Funded Pre-K
- Ready for Kindergarten Classes
- Upping the Engagement
- P3 Leadership Team
- Pre-K Partner Gatherings
- Full Day Kindergarten Components
- Analyzing the Data

Roseburg Preschool

Roseburg Preschool

Schedule

- Yearly **
- Daily **

Entry/Application/Funding

- Title 1
- Academic Screener **
- Open registration

Data/Assessment

- PELI **
- DIBELS K-5 **
- Early Learning Outcomes Framework **

A peek inside our classrooms!

Yearly Calendar

S	M	T	W	T	F	S
					1	2
3	4	5	6	7	8	9
10	11	12	13	14	15	16
17	18	19	20	21	22	23
24	25	26	27	28	29	30

S	M	T	W	T	F	S
	1	2	3	4	5	6
7	8	9	10	11	12	13
14	15	16	17	18	19	20
21	22	23	24	25	26	27
28	29	30	31			

S	M	T	W	T	F	S
				1	2	3
4	5	6	7	8	9	10
11	*12	13	14	15	16	17
18	19	20	21	22	23	24
25	26	27	28	29	30	

**FIRST DAY OF SCHOOL*

OCTOBER

S	M	T	W	T	F	S
2	3	4	5	6	7	8
9	10	11	12	13	14	15
16	17	18	19	20	21	22
23	24	25	26	27	28	29
30	31					

NOVEMBER

S	M	T	W	T	F	S
		1	2	3	4	5
6	7	8	9	10	11	12
13	14	15	16	17	18	19
20	21	22	23	24	25	26
27	28	29	30			

DECEMBER

S	M	T	W	T	F	S
				1	2	3
4	5	6	7	8	9	10
11	12	13	14	15	16	17
18	19	20	21	22	23	24
25	26	27	28	29	30	

JANUARY

S	M	T	W	T	F	S
1	2	3	4	5	6	7
8	9	10	11	12	13	14
15	16	17	18	19	20	21
22	23	24	25	26	27	28
29	30	31				

FEBRUARY

S	M	T	W	T	F	S
			1	2	3	4
5	6	7	8	9	10	11
12	13	14	15	16	17	18
19	20	21	22	23	24	25
26	27	28				

MARCH

S	M	T	W	T	F	S
			1	2	3	4
5	6	7	8	9	10	11
12	13	14	15	16	17	18
19	20	21	22	23	24	25
26	27	28	29	30	31	

APRIL

S	M	T	W	T	F	S
2	3	4	5	6	7	8
9	10	11	12	13	14	15
16	17	18	19	20	21	22
23	24	25	26	27	28	29
30						

MAY

S	M	T	W	T	F	S
	1	2	3	4	5	6
7	8	9	10	11	12	13
14	15	16	17	18	19	20
21	22	23	24	25	26	27
28	29	30	31			

JUNE

S	M	T	W	T	F	S
				1	2*	3
4	5	6	7	8	9	10
11	12	13	14	15	16	17
18	19	20	21	22	23	24
25	26	27	28	29	30	

**LAST DAY OF SCHOOL*

	Pre-K School Days
	Pre-K Soft Start
	Parent Engagement/Check-In Days
	Teacher Planning
	Conference Days
	Holiday

Daily Agenda

Score Sheet

(Give a score of 2, 1, or 0)

1. Draw a picture of a person.
2: Recognizable person with at least 3 features
1: Recognizable person with 1 or 2 features
0: Not a recognizable person
2. Write your first name.
2: Letter reversal OK, nickname OK, letters in correct order
1: Some letters, missing letters, letters out of order
0: Refusal, no letters of name, scribbles
3. Identifies basic colors
2: 8 or more
1: 4-7
0: 0-3
4. Identifies at least 4 basic shapes
2: 4 or more
1: 1-3
0: None
5. Identifies uppercase letters, letter sounds
2: 15 or more
1: 9-14
0: 0-8
6. Able to rote count
2: 10 or more
1: 5-9
0: 0-4
7. Identifies lowercase letters, letter sounds
2: 15 or more
1: 9-14
0: 0-8

8. Able to randomly recognize numerals 0-9
2: 7 or more
1: 5-6
0: 0-4
9. Touch and count out objects in a line
2: 7-10
1: 5-6
0: 0-4
10. Able to put pictures in order
1: All in order
0: Any out of order
11. Copies and extends repeating pattern
2: Copied and extended
1: Copied pattern
0: Didn't do either
12. Demonstrates Hops, Jumps, Skips
2: 2 or more
1: 1
0: None

During the first 6 weeks of school, all children entering Kindergarten in Oregon will take a Kindergarten Assessment in the Fall. This assessment will provide Kindergarten teachers with ample knowledge of the skills their Kindergarten students have entering school.

Pre-schools, daycares, stay-at-home parents, and other Pre-K facilities are encouraged to utilize this pamphlet to help their children achieve the necessary skills needed by children starting Kindergarten.

Your Child's Readiness Score (total points)
22-27 ready for kindergarten
16-21 moderate support needed
0-15 extensive support needed

Created through a collaborative effort of early childhood educators in Umatilla, Union and Morrow Counties



Is your child
Kindergarten ready?

PELI Data

Preschool Early Literacy Indicators

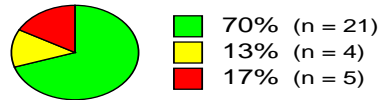
District Wide 2013-14

District Wide 2014 -15

District Wide 2015-16

District Wide 2016-17

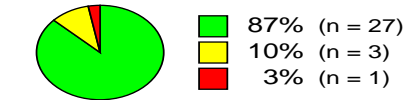
----Analysis Over Time----

Beginning of Year**Middle of Year****End of Year****PELI Composite Score**

Number of Students = 30
 Average = 172.6
 Standard Deviation = 59.5
 Score Range = 34 to 275



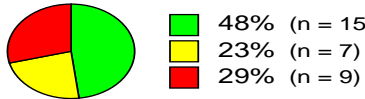
Number of Students = 31
 Average = 209.3
 Standard Deviation = 50.4
 Score Range = 102 to 280



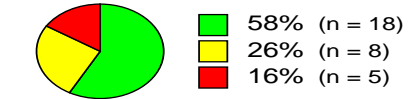
Number of Students = 31
 Average = 247
 Standard Deviation = 28.7
 Score Range = 163 to 279

Alphabet Knowledge: Total Letters Named

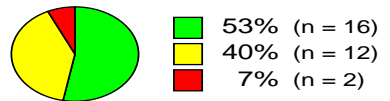
Number of Students = 31
 Average = 10.4
 Standard Deviation = 9.8
 Score Range = 0 to 26



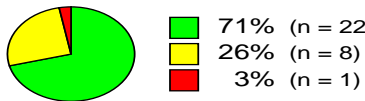
Number of Students = 31
 Average = 15.9
 Standard Deviation = 9.3
 Score Range = 1 to 26



Number of Students = 31
 Average = 20.8
 Standard Deviation = 7.2
 Score Range = 3 to 26

Vocabulary/Oral Language Total Score

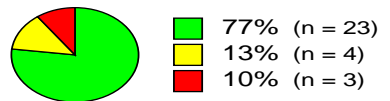
Number of Students = 30
 Average = 19.3
 Standard Deviation = 6.1
 Score Range = 6 to 31



Number of Students = 31
 Average = 24.4
 Standard Deviation = 4.6
 Score Range = 14 to 33



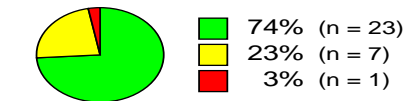
Number of Students = 31
 Average = 25.3
 Standard Deviation = 3.1
 Score Range = 20 to 32

Comprehension Total Score

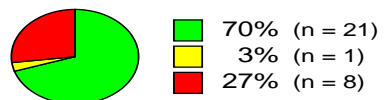
Number of Students = 30
 Average = 15.6
 Standard Deviation = 4.2
 Score Range = 4 to 22



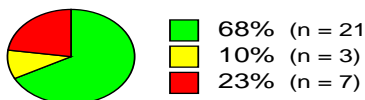
Number of Students = 31
 Average = 16.2
 Standard Deviation = 3.1
 Score Range = 10 to 21



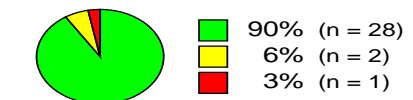
Number of Students = 31
 Average = 18.1
 Standard Deviation = 2.6
 Score Range = 12 to 22

Phonological Awareness Total Score

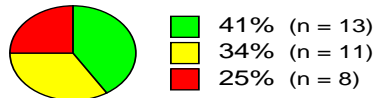
Number of Students = 30
 Average = 8.1
 Standard Deviation = 5.7
 Score Range = 0 to 15



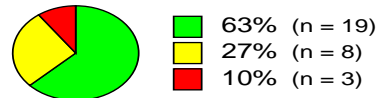
Number of Students = 31
 Average = 9.8
 Standard Deviation = 5.5
 Score Range = 0 to 15



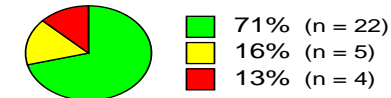
Number of Students = 31
 Average = 14.2
 Standard Deviation = 1.8
 Score Range = 7 to 15

PELI Composite Score

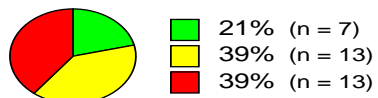
Number of Students = 32
 Average = 127.8
 Standard Deviation = 49.6
 Score Range = 18 to 243



Number of Students = 30
 Average = 206.4
 Standard Deviation = 47.3
 Score Range = 96 to 288



Number of Students = 31
 Average = 241.5
 Standard Deviation = 48.5
 Score Range = 122 to 299

Alphabet Knowledge: Total Letters Named

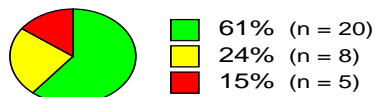
Number of Students = 33
 Average = 4.2
 Standard Deviation = 6.1
 Score Range = 0 to 24



Number of Students = 30
 Average = 11.4
 Standard Deviation = 9
 Score Range = 1 to 26



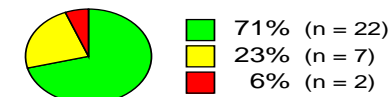
Number of Students = 31
 Average = 19.1
 Standard Deviation = 6.3
 Score Range = 3 to 26

Vocabulary/Oral Language Total Score

Number of Students = 33
 Average = 19
 Standard Deviation = 6.5
 Score Range = 0 to 30



Number of Students = 30
 Average = 23
 Standard Deviation = 5.5
 Score Range = 12 to 31



Number of Students = 31
 Average = 27
 Standard Deviation = 5.7
 Score Range = 12 to 35

Comprehension Total Score

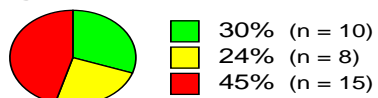
Number of Students = 32
 Average = 12.5
 Standard Deviation = 4.2
 Score Range = 0 to 19



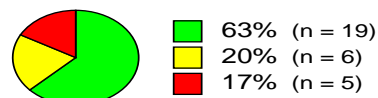
Number of Students = 30
 Average = 18.9
 Standard Deviation = 2.4
 Score Range = 14 to 23



Number of Students = 31
 Average = 18.7
 Standard Deviation = 2.9
 Score Range = 10 to 23

Phonological Awareness Total Score

Number of Students = 33
 Average = 3
 Standard Deviation = 4.2
 Score Range = 0 to 14

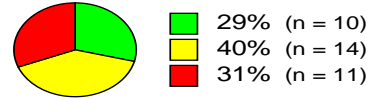


Number of Students = 30
 Average = 9.7
 Standard Deviation = 5
 Score Range = 0 to 15

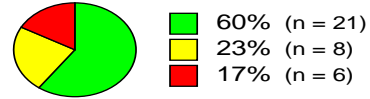


Number of Students = 31
 Average = 11.8
 Standard Deviation = 4.2
 Score Range = 0 to 15

PELI Composite Score



Number of Students = 35
 Average = 140.3
 Standard Deviation = 37
 Score Range = 80 to 233

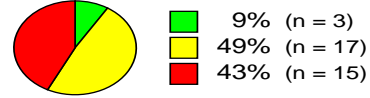


Number of Students = 35
 Average = 205.5
 Standard Deviation = 40.7
 Score Range = 112 to 274



Number of Students = 32
 Average = 248.3
 Standard Deviation = 34.1
 Score Range = 171 to 295

Alphabet Knowledge Total Score



Number of Students = 35
 Average = 2.1
 Standard Deviation = 1.6
 Score Range = 0 to 6

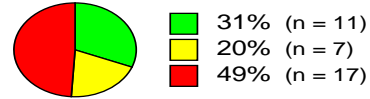


Number of Students = 35
 Average = 10.2
 Standard Deviation = 6.4
 Score Range = 0 to 24



Number of Students = 32
 Average = 21.4
 Standard Deviation = 5.1
 Score Range = 9 to 26

Phonological Awareness Total Score



Number of Students = 35
 Average = 2.7
 Standard Deviation = 3.6
 Score Range = 0 to 10



Number of Students = 35
 Average = 8.3
 Standard Deviation = 5
 Score Range = 0 to 15

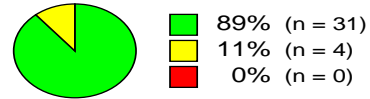


Number of Students = 32
 Average = 11.8
 Standard Deviation = 3.6
 Score Range = 0 to 15

Vocabulary/Oral Language Total Score



Number of Students = 35
 Average = 18.4
 Standard Deviation = 4.7
 Score Range = 8 to 30

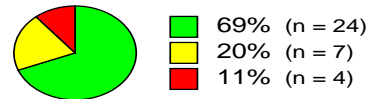


Number of Students = 35
 Average = 24.5
 Standard Deviation = 3.1
 Score Range = 18 to 30



Number of Students = 32
 Average = 27.4
 Standard Deviation = 3.8
 Score Range = 20 to 34

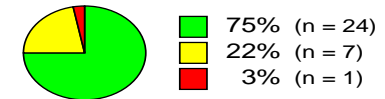
Comprehension Total Score



Number of Students = 35
 Average = 14.2
 Standard Deviation = 3.4
 Score Range = 7 to 22

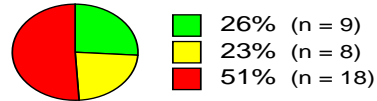


Number of Students = 35
 Average = 18.8
 Standard Deviation = 2.8
 Score Range = 10 to 23

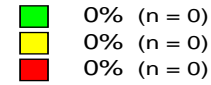


Number of Students = 32
 Average = 18.8
 Standard Deviation = 2.7
 Score Range = 12 to 23

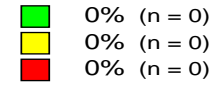
PELI Composite Score



Number of Students = 35
 Average = 111.6
 Standard Deviation = 52.8
 Score Range = 0 to 214

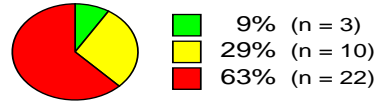


Number of Students = 0
 Average =
 Standard Deviation =
 Score Range =

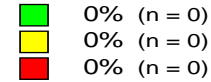


Number of Students = 0
 Average =
 Standard Deviation =
 Score Range =

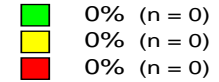
Alphabet Knowledge Total Score



Number of Students = 35
 Average = 1.9
 Standard Deviation = 3.3
 Score Range = 0 to 14

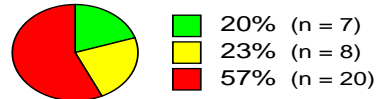


Number of Students = 0
 Average =
 Standard Deviation =
 Score Range =

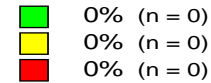


Number of Students = 0
 Average =
 Standard Deviation =
 Score Range =

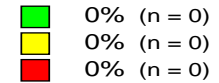
Phonological Awareness Total Score



Number of Students = 35
 Average = 1.9
 Standard Deviation = 3.3
 Score Range = 0 to 13

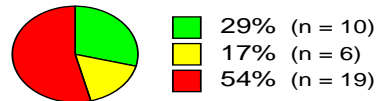


Number of Students = 0
 Average =
 Standard Deviation =
 Score Range =

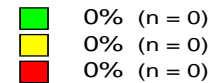


Number of Students = 0
 Average =
 Standard Deviation =
 Score Range =

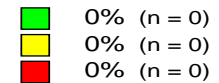
Vocabulary/Oral Language Total Score



Number of Students = 35
 Average = 11.7
 Standard Deviation = 7.6
 Score Range = 0 to 25

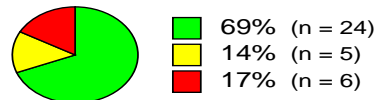


Number of Students = 0
 Average =
 Standard Deviation =
 Score Range =

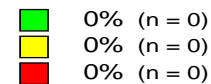


Number of Students = 0
 Average =
 Standard Deviation =
 Score Range =

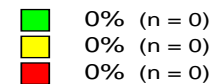
Comprehension Total Score



Number of Students = 35
 Average = 13.7
 Standard Deviation = 4.4
 Score Range = 0 to 20



Number of Students = 0
 Average =
 Standard Deviation =
 Score Range =



Number of Students = 0
 Average =
 Standard Deviation =
 Score Range =

*data for kids who completed an entire year in RPS

Head Start in Kinder

	Benchmark	Strategic	Intensive
Fall 75 students	29%	31%	40%
Winter 75 students	48%	29%	23%
Spring 75 students	61%	24%	15%

Roseburg Pre-K in Kinder

	Benchmark	Strategic	Intensive
Fall 21 students	80%	10%	10%
Winter 21 students	70%	20%	10%
Spring 21 students	90%	10%	---

Title 1 in Kinder

	Benchmark	Strategic	Intensive
Fall 187 students	35%	21%	44%
Winter 187 students	56%	22%	21%
Spring 187 students	71%	20%	9%

Non-Title in Kinder

	Benchmark	Strategic	Intensive
Fall 100 students	62%	20%	18%
Winter 100 students	74%	15%	11%
Spring 100 students	65%	22%	13%

Pre-K 2013-14
Where are they now?

1st grade 15-16

Head Start in 1st			
	Benchmark	Strategic	Intensive
Fall 63 students	52%	21%	27%
Winter 63 Students	59%	9%	32%
Spring 61 students	57%	24%	24%
Roseburg Pre-K in 1st			
	Benchmark	Strategic	Intensive
Fall 20 students	70%	10%	20%
Winter 20 students	65%	15%	20%
Spring 20 Students	65%	20%	15%
Title 1 Students in 1st			
	Benchmark	Strategic	Intensive
Fall 206 Students	56%	20%	24%
Winter 206 Students	67%	7%	26%
Spring 204 students	69%	11%	20%
Non-Title in 1st			
	Benchmark	Strategic	Intensive
Fall 119 Students	61%	14%	24%
Winter 119 students	77%	10%	13%
Spring 119 Students	84%	9%	7%

Pre-K 2013-14

Where are they now?

Head Start in 2nd			
	Benchmark	Strategic	Intensive
Fall 52 Students	73%	8%	19%
Winter			
Spring			
Roseburg Pre-K in 2nd			
	Benchmark	Strategic	Intensive
Fall 19 Students	74%	10%	16%
Winter			
Spring			
Title 1 Students in 2nd			
	Benchmark	Strategic	Intensive
Fall 235 Students	67%	10%	23%
Winter			
Spring			
Non-Title in 2nd			
	Benchmark	Strategic	Intensive
Fall 133 Students	83%	4%	13%
Winter			
Spring			

Pre-K 2013-14
Where are they now?

























Ready for Kindergarten!

Ready for Kindergarten!

Overview

- Purpose
- Implementation
- Materials

Strength of Program

- Growth in attendance
- Family to school connection
- Prepared Kindergarteners

Parent Testimonials

Calling all parents! Birth to age 5 is the time to get your child...

READY! for Kindergarten®



Birth to Age 5: Prepare Your Child for School Success

These FREE workshops will show you how.

WHO:

HOW: Sign up today!

WHEN: Class size is limited — sign up now!

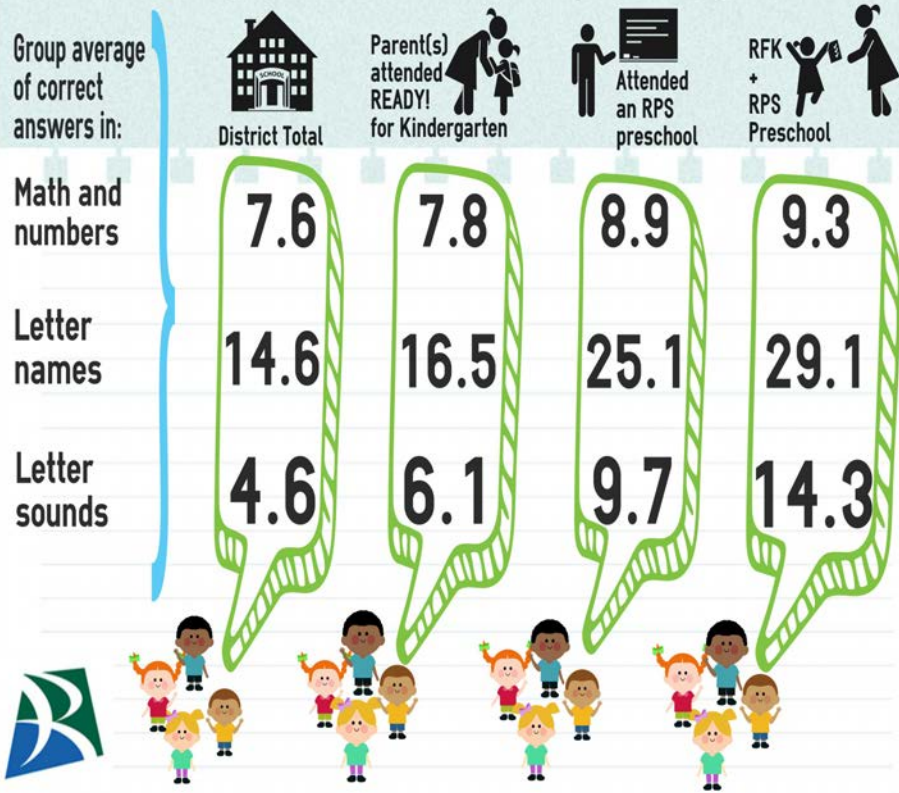


Be **READY!** when the bus comes the first day of school!

www.ReadyForKindergarten.org

More opportunities = More A-B-Cs and 1-2-3s

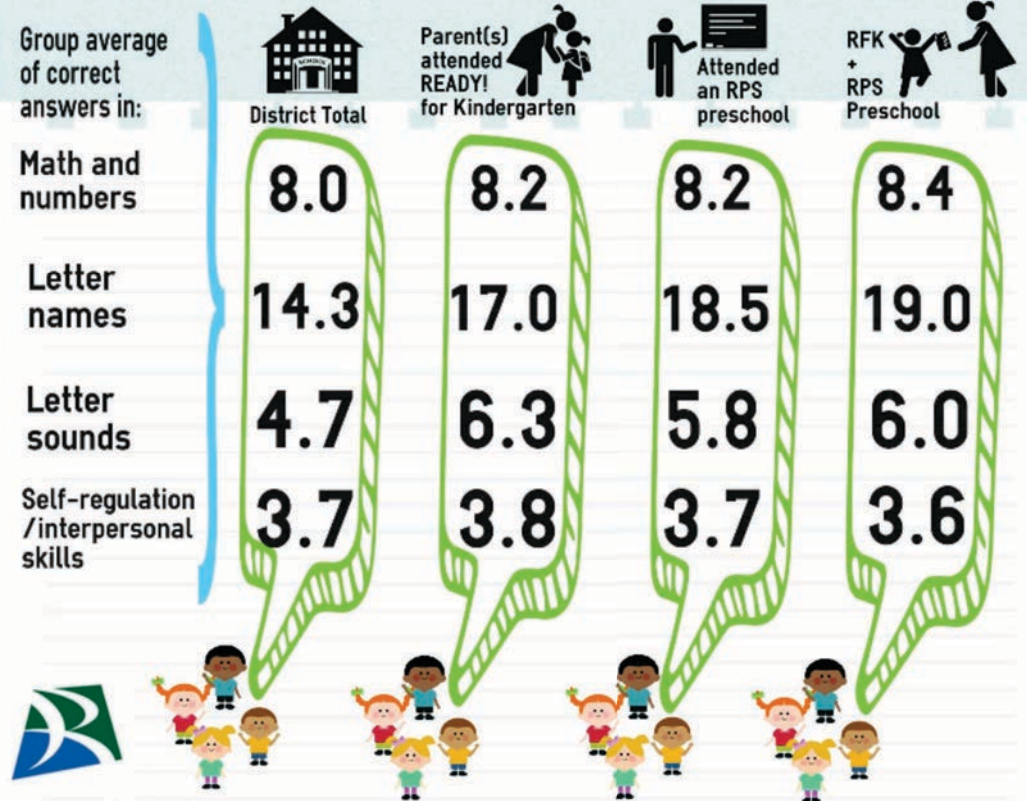
What Roseburg Public Schools saw in its kindergartners in September 2014



Data from Oregon Kindergarten Assessment and RPS early learning programs.

Pre-K programs improve school readiness

What Roseburg Public Schools saw in its kindergartners in September 2015



Data from Oregon Kindergarten Assessment and RPS early learning programs.

Numbers here are based on data collected for the Oregon Kindergarten Assessment and Roseburg Public Schools early learning programs.

"The biggest thing for us was that it was such a good introduction for him. He loved being at school and the school setting. He still talks about going to school and going back to school."

"The train puzzle and the alphabet puzzle are definitely his favorites. We make a game out of asking him what sound a letter makes, and then he figures out where it goes. We practice recognizing numbers and getting them in order."

"You want your kid to have the best start, and it's easy to feel helpless how to get there and what to focus energy on. This builds confidence. (The child's) self-esteem doesn't take a hit, and they don't think they are not smart enough, not caught up with their classmates."

.....
— Cristina Cherry
of Roseburg, whose son will
attend Hucrest Elementary School,



– Amy Downs
of Umpqua, whose daughter will
attend Melrose Elementary School

“The resources they give you are very nice – the puzzles, the games and there are calendars – they give them to you and go over them with you, and it’s nice to be able to take them home.”


“There were some matching shapes that I found very helpful. I could talk with her when we were using them: ‘Tell me how many corners are on this shape?’ They teach parents how to ask questions about what children are looking at.”

“I’d recommend it really because of all the resources. There’s a calendar with options for something you can do that day, and a great game where you spin the wheel and land on ‘color,’ so you name your three favorite colors.”

“You also get guidelines for what a child should be doing at a specific age. That was very helpful, so you could look into the future and know what are the expectations.”

“It’s really like Christmas each time you go, you get a great bag of tricks. For all the moms who don’t have a lot of access to resources to have access to this stuff, it’s wonderful.”





– Kristal Plikat,
Green Elementary teacher
and parent of a pre-K child

“Everyone can learn something new at these classes. I have a master's degree and I work with kids every day. I learned lots of new tricks and ways of looking at learning/ teaching Pre-K children. We can all learn, all of the time.”

“These classes create a sense of unity and welcome our parents and families before they officially become a part of our community. Making these connections with other parents, staff, and teachers before students come to school is the first step in supporting student success.”



Upping the Engagement

Family Engagement → Engaging Families

Strike
a
Balance

Acknowledge
Effort

Create
a
School
Family

Movie Nights

STEAM activities

Bingo

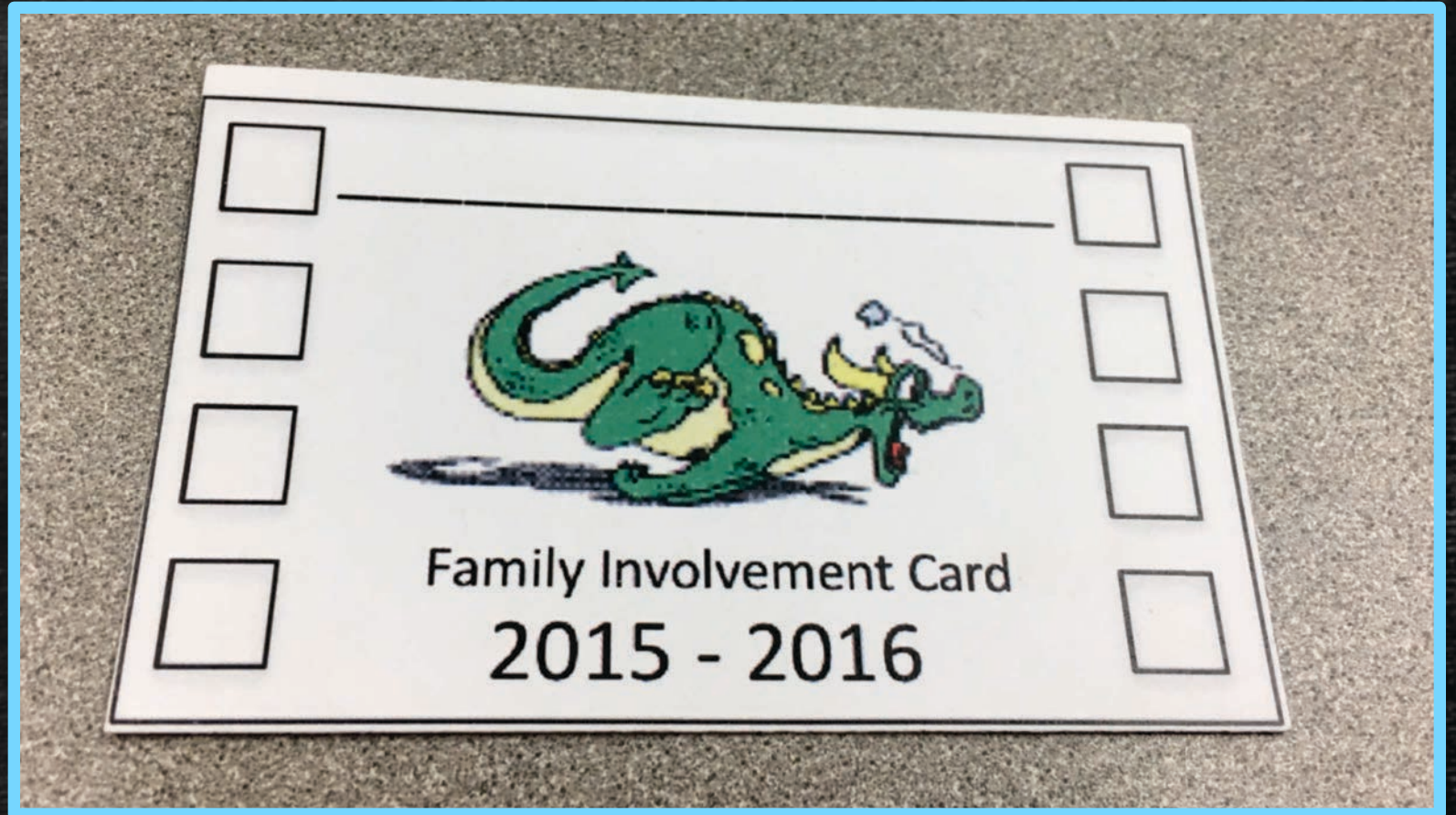
Strike
a
Balance

Back 2 School
Scavenger

Carnivals

One School – One Book

Acknowledge
Effort





Create
a
School
Family

P₃ Leadership Team

Our Work to Date...

Bringing
Community
Stakeholders
to the
Table

GOALS
COMMON LANGUAGE
UNDERSTANDING

Action Steps

Pre-K Partner Gatherings

You're Invited to the Winter

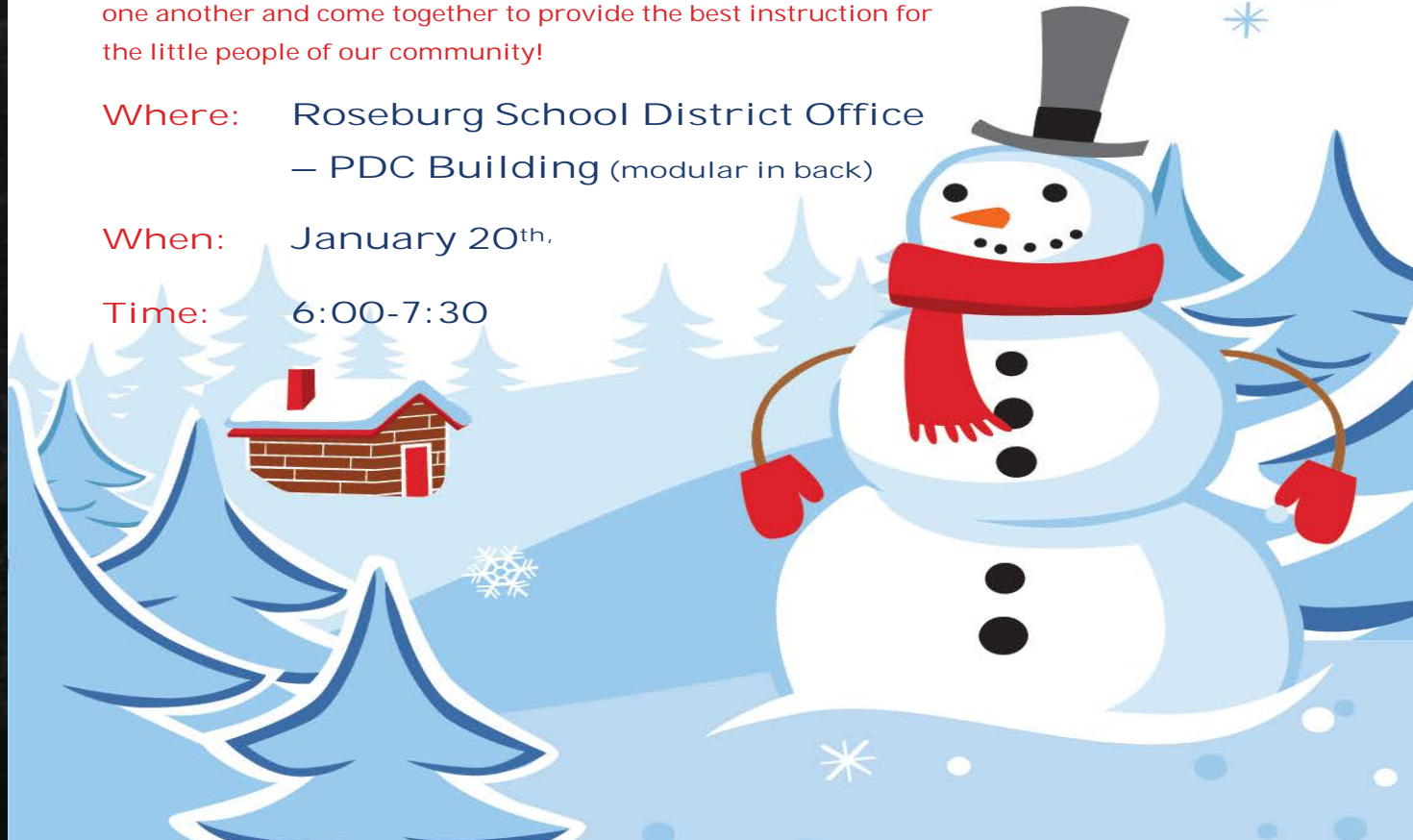
Pre-K Partners Gathering

Please join local pre-k teacher leaders for an informal night of sharing and support. Bring your success stories, examples of what is working in your class, problems you need support solving, and any burning questions you may have to the table as we learn from one another and come together to provide the best instruction for the little people of our community!

Where: Roseburg School District Office
– PDC Building (modular in back)

When: January 20th.

Time: 6:00-7:30



School
Based Pre-K

Faith Based
Pre-K

Home Based
Pre-K

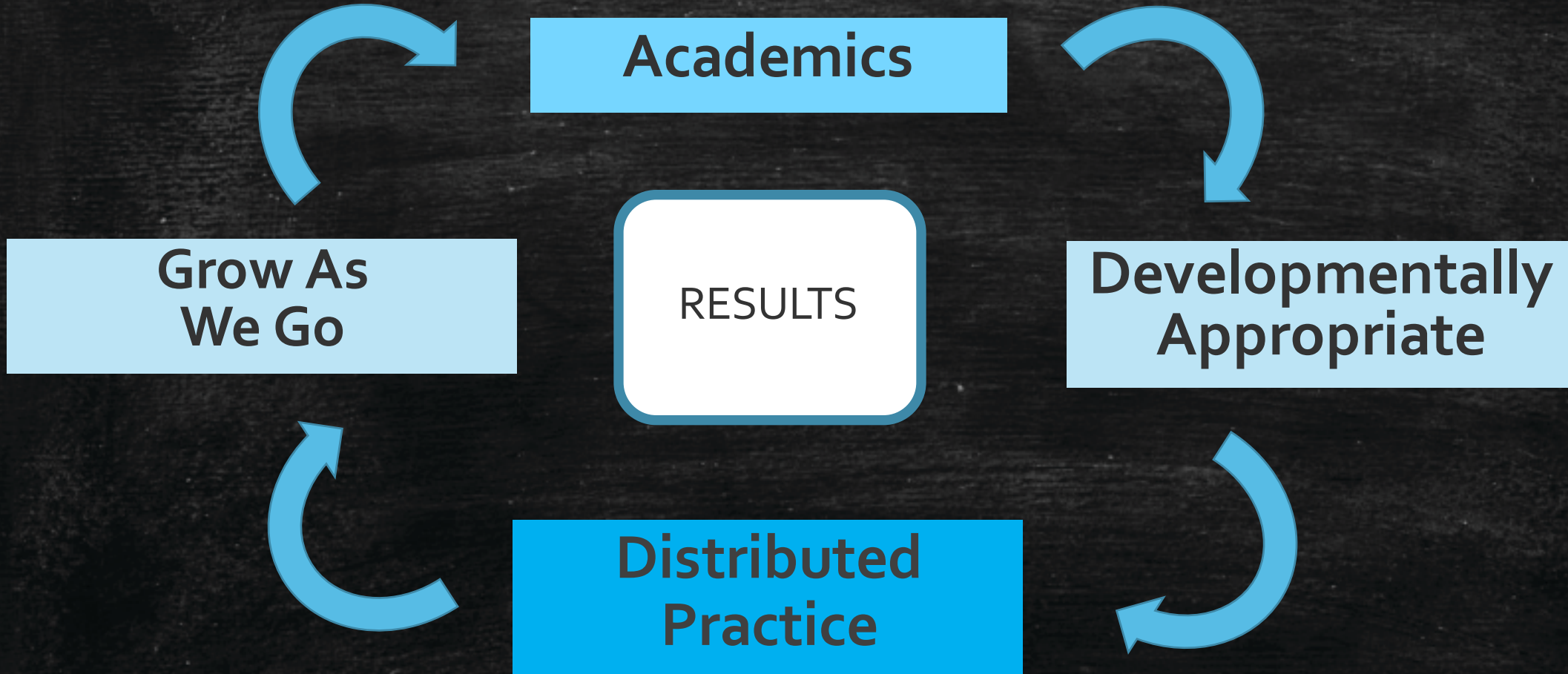
Pre-K Co-op

Private
Pre-K

Head Start

Full Day Kindergarten Components

Roseburg Full Day Kinder



Example Schedule



RESULTS

	Monday	Tuesday	Wednesday	Thursday	Friday
8:00	Prep	Prep	Prep	Prep	Prep
8:50	Morning Meeting	Morning Meeting	Morning Meeting	Morning Meeting	Morning Meeting
9:15	Number Talks	Number Talks	Number Talks	Number Talks	Number Talks
9:25	Math Groups	Math Groups	Math Groups	Math Groups	Math Groups
9:45	Recess	Recess	Recess	Recess	Recess
10:05	Small Group Reading	Small Group Reading	Small Group Reading	Small Group Reading	Small Group Reading
10:35	ELA/ Intervention	ELA/ Intervention	ELA/ Intervention	ELA/ Intervention	ELA/ Intervention
11:10	Lunch	Lunch	Lunch	Lunch	Lunch
11:25	Recess	Recess	Recess	Recess	Recess
11:40	ELA	ELA	ELA	ELA	ELA
12:20	Library	PE	Music	CDS	Music
12:50	ELA	ELA	ELA	ELA	ELA
1:10	Recess	Recess	Recess	Recess	Recess
1:30	Math	Math	Math	Math	Math
2:15	Sci/Soc/Art	Sci/Soc/Art	2:10 Home	Sci/Soc/Art	Sci/Soc/Art
2:30	Play	Play	X	Play	Play
3:00	Closing	Closing	X	Closing	Closing
3:10	Home	Home	X	Home	Home
3:20	prep	prep	X	prep	prep

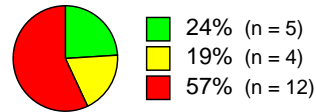
RESULTS

“They are more aware of others and their needs.”

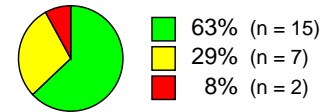
“Stamina is stronger and they are ready to learn.”

“Students are more emotionally and socially prepared for school.”

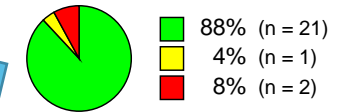
DIBELS Composite Score



Number of Students = 21
Average = 17.9
Standard Deviation = 20
Score Range = 0 to 76

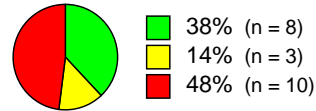


Number of Students = 24
Average = 139.8
Standard Deviation = 54.1
Score Range = 2 to 244

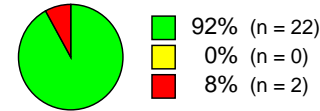


Number of Students = 24
Average = 159.9
Standard Deviation = 49
Score Range = 6 to 242

First Sound Fluency



Number of Students = 21
Average = 8.7
Standard Deviation = 9.9
Score Range = 0 to 27



Number of Students = 24
Average = 45.9
Standard Deviation = 14.2
Score Range = 0 to 60

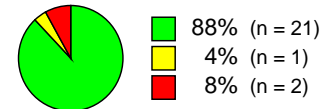
Letter Naming Fluency

Number of Students = 21
Average = 9.1
Standard Deviation = 12.6
Score Range = 0 to 49

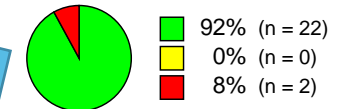
Number of Students = 24
Average = 33.1
Standard Deviation = 18.2
Score Range = 1 to 70

Number of Students = 24
Average = 52
Standard Deviation = 20.3
Score Range = 6 to 82

Phoneme Segmentation Fluency

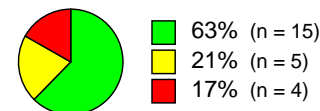


Number of Students = 24
Average = 39.2
Standard Deviation = 16
Score Range = 0 to 70

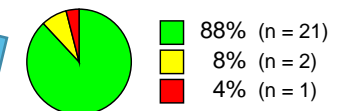


Number of Students = 24
Average = 58.8
Standard Deviation = 17.3
Score Range = 0 to 76

NWF Correct Letter Sounds



Number of Students = 24
Average = 21.6
Standard Deviation = 13.1
Score Range = 0 to 57



Number of Students = 24
Average = 49.1
Standard Deviation = 19.9
Score Range = 0 to 90

NWF Whole Words Read

Analyzing the Data

Are Our Efforts Making a Difference?

Taking a Closer Look at the Data

Oregon Kindergarten Assessment Results
Roseburg Public Schools
2013-2015

2013 Oregon Kindergarten Assessment Results

Douglas County SD 4

Approaches to Learning

Early Math

Early Literacy

	Self Regulation	Interpersonal Skills	Total	Numbers & Operations	Letter Names	Letter Sounds	Spanish Letter Names
	Average Rating (1-5)	Average Rating (1-5)	Average Rating (1-5)	# Correct (0-16)	# Correct (0-100)	# Correct (0-110)	# Correct (0-100)
State Average	3.5	3.9	3.7	8.0	18.5	6.7	
District	3.2	3.7	3.4	7.7	17.3	5.5	*
Title I Kindergarten	3.1	3.6	3.3	7.3	15.4	4.7	*
Ready for Kindergarten!	3.2	3.7	3.4	8.1	20.2	5.6	*
Title I Preschool	3.6	3.9	3.7	8.6	24.9	7.5	*
RFK! & Title 1 Pre-K	3.7	4.0	3.8	9.0	36.3	11.8	*

What is the data telling us??

What do we contribute the 2013 results to?

- High quality preschool instruction
 - Licensed teacher
 - Full-Time assistant
 - Small Class size
- 2012-13 Roseburg pre-k moves from home instruction to classroom
- Applicants pooled from higher % of connected families
 - Minimal advertisement of program implemented to date
- First set of kinder students receiving *Ready for Kindergarten!* classes

2014 Oregon Kindergarten Assessment Results

Douglas County SD 4

	Approaches to Learning			Early Math	Early Literacy		
	Self Regulation	Interpersonal Skills	Total	Numbers & Operations	Letter Names	Letter Sounds	Spanish Letter Names
	Average Rating (1-5)	Average Rating (1-5)	Average Rating (1-5)	# Correct (0-16)	# Correct (0-100)	# Correct (0-110)	# Correct (0-100)
State Average	3.6	3.9	3.7	8.0	17.7	6.6	2.9
District	3.5	3.7	3.6	7.6	14.6	4.6	*
Title I Kindergarten	3.4	3.7	3.5	7.5	12.8	3.9	*
Ready for Kindergarten!	3.5	3.9	3.6	7.8	16.5	6.1	*
Title I Preschool	4.0	4.2	4.0	8.9	25.1	9.7	*
RFK! & Title 1 Pre-K	4.0	4.0	4.0	9.3	29.1	14.3	*

What is the data telling us? How is it different? How is it the same?

What do we contribute the 2014 results to?

- High quality preschool instruction
 - Licensed teacher
 - Full-Time assistant
 - Small Class size
- 2013-14 Roseburg Pre-K expanded, adding an additional classroom
- Increased number of families attending *Ready for Kindergarten!* classes

2015 Oregon Kindergarten Assessment Results

Douglas County SD 4	Approaches to Learning			Early Math	Early Literacy		
	Self Regulation	Interpersonal Skills	Total	Numbers & Operations	Letter Names	Letter Sounds	Spanish Letter Names
	Average Rating (1-5)	Average Rating (1-5)	Average Rating (1-5)	# Correct (0-16)	# Correct (0-100)	# Correct (0-110)	# Correct (0-100)
State Average	→ 3.5	3.8	3.6	8.5	18.5	7.4	1.9
District	→ 3.6	3.8	3.7	8.0	14.3	4.7	*
Title I Kindergarten	→ 3.6	3.7	3.6	7.8	12.5	3.9	*
Head Start	→ 3.5	3.7	3.6	7.7	10.8	2.0	*
Ready for Kindergarten!	→ 3.8	4.0	3.8	8.2	17.0	6.3	*
Title I Preschool	→ 3.6	3.8	3.7	8.2	18.5	5.8	*
RFK! & Title 1 Pre-K	→ 3.6	3.7	3.6	8.4	19.0	6.0	*

What is the data telling us? How is it different? How is it the same?

What do we contribute the 2015 results to?

- High quality preschool instruction
 - Licensed teacher
 - Full-Time assistant
 - Small Class size
- Taking hold as a consistent and reputable district pre-k program
- Increased advertisement efforts
- Increased number of applicants
 - Beginning to pool from a higher percentage of our less connected families
- Continued increase in number of families attending *Ready for Kindergarten classes!*

Conclusions based on data

- High quality Pre-K is making a positive difference
- *Ready for Kindergarten!* classes are making a positive difference
- Our efforts are narrowing the achievement gap
- There is still more work to do

Questions we still have..

- How does our pre-K data compare with other local pre-K data?
- How does our pre-k data compare with other statewide pre-k data?
- How do we assure our efforts positively effect all incoming families?
- Can we find opportunities to learn from other successful systems statewide?

