

Inclusive Child Care Program

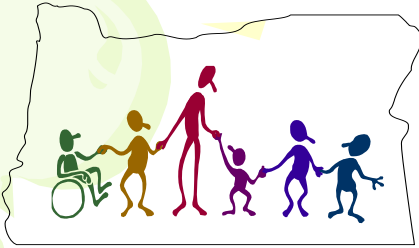


Oregon Council on
Developmental Disabilities

971/673-2286

contact.iccp@state.or.us

www.oregoninclusivecc.org



Inclusive Child Care Program Mission:

Advocate for and support:

- Access to child care, and
- Inclusive child care opportunities

For families of children and youth with disabilities, emotional/behavioral disorders and special health care needs.



**Individualized
assessments for:**

Financial supplement

Consultation

Training

QRIS supports

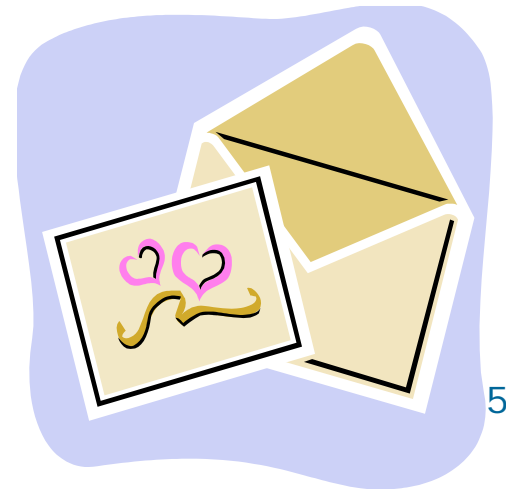


A brief ICCP history

- Inclusive Child Care Pilot Project started in 1998. We became a “Program” in 1999.
- DHS established the High Need Child Care Rate in 2000.
- The intent was to increase the amount that providers received to help stabilize care and support providers take care of kids with high needs.

Party Particulars

- Who:
 - » Caseworkers
 - » YOU!
 - » Members of the Inclusive Child Care Team
 - » Kids & their families from all around the State of Oregon
 - » Child care providers
- When: It's an Open House – whenever
- Where: All over the state
 - » Directions attached



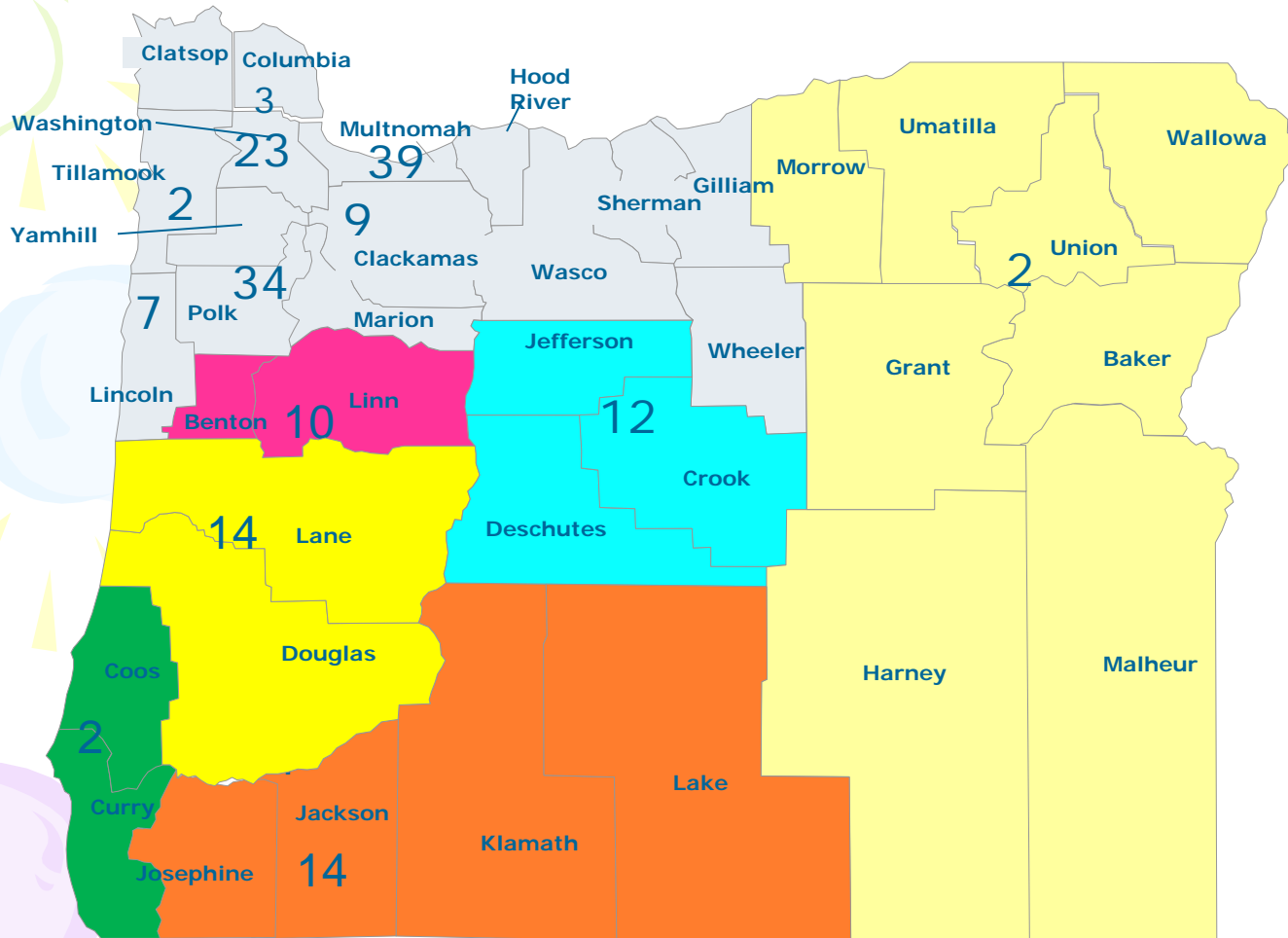
With our main office in Portland,
we can't do it alone

Subcontractors cover these counties:

- Baker, Union, Wallowa, Malheur, Harney, Grant, Umatilla & Morrow
- Jackson, Josephine, Klamath & Lake
- Deschutes, Crook & Jefferson
- Lane/Douglas
- Linn/Benton
- Coos/Curry



Statewide Inclusive Child Care Program Enrollment & Coverage Active, In Process or Approved



Inclusive Child Care Coverage As of 11-2016

Portland Office staff kids

NeighborImpact CCR&R

Family Connections of Linn Benton

Family Connections of Lane & Douglas

CARE Connections CCR&R

Child Care Resource Network

Umatilla Morrow HeadStart, Inc.

Where does the money come from?

Federal CCDBG dollars are allotted to ICCP through



Dept of Human Services Child Care Program - "High Need Rate"



Office of Child Care Special Populations - "ICCP Financial Supplement"

Family Eligibility

DHS HN rate

- Eligible for Employment Related Day Care (ERDC)
- May also be TANF or JOBS-related child care

OCC financial supplement

- Family income under 275% of Federal Poverty Level (\$5,569 for a family of 4)
- Need child care to work or go to school



Child Eligibility



- Birth through 17 years of age
- Have a physical disability, developmental disability, emotional/behavioral disorder, or special health care need
- Require extra supports, accommodations, or higher levels of care and supervision *in child care*
- Be eligible or receiving additional support services

Who does ICCP serve?

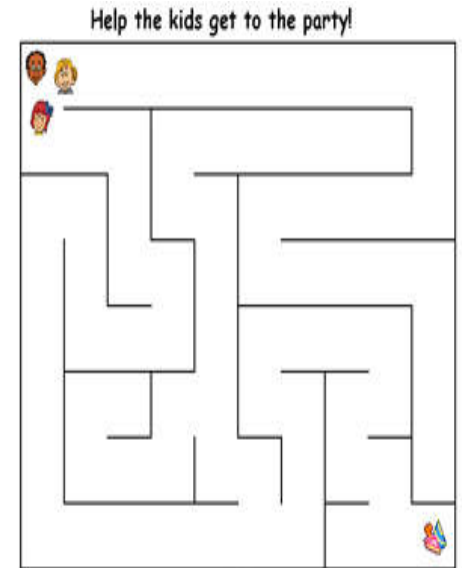
Children who require a higher level of care than their same aged peers due to:

- Challenging Behaviors
- Autism
- ADHD
- Motor disability
- Medical Conditions
- Developmental delay
- Emotional/Behavioral Disorders



Getting through the maze

- ✓ Referral/Application received
- ✓ We contact parent/provider
- ✓ Assessment meeting
 - ✓ We meet to discuss the child's abilities and needs while *in child care*
- ✓ Complete assessment using documentation
- ✓ Recommend a supplement (or not)
- ✓ Identify opportunities for supports & technical assistance

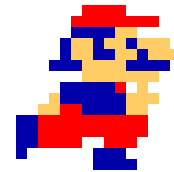




Rules of the game

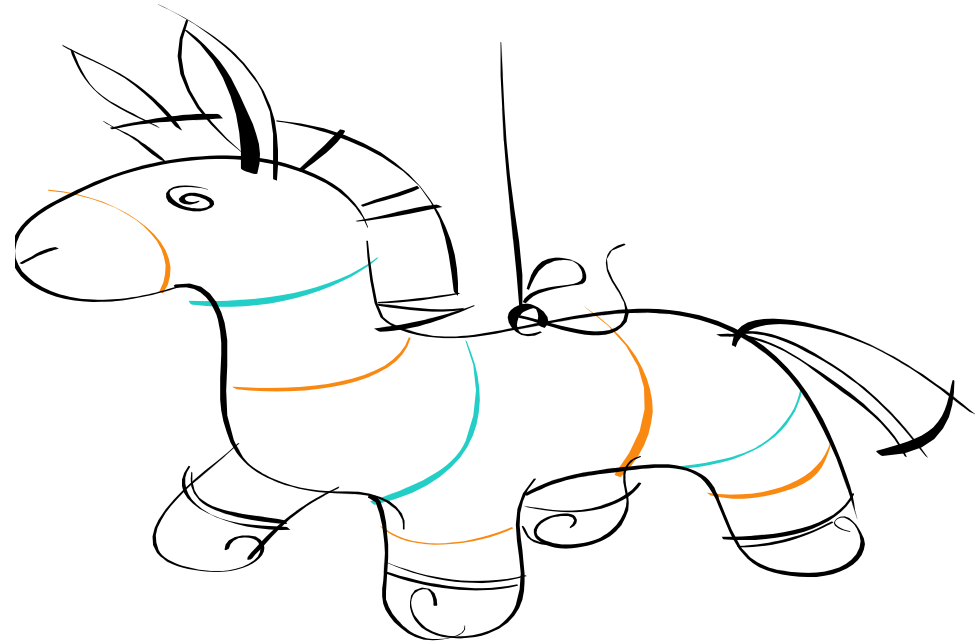
Each child is assessed for how his or her level of care differs from others the same age in:

1. Self Sufficiency in daily tasks
2. Mobility
3. Communication skills
4. Ability to understand and comprehend
5. Need for supervision, monitoring & intervention
6. Complexity of care
7. Other



What is the extra \$\$ used for?

- Accommodations
- Supports
- Training
- Higher levels of care, supervision, and interventions



Not for: Basic provider fees



Scavenger Hunt

Who to look for....

- Kids who experience repeated loss of child care or high turnover in individual care providers
- Kids who are receiving high levels of EI/ECSE/SPED supports
- Kids who are over age 12 and still needing care
- Kids with whom child care providers struggle in the classroom/child care setting

Partnerships, Consultation, Training and QRIS..... Oh My!



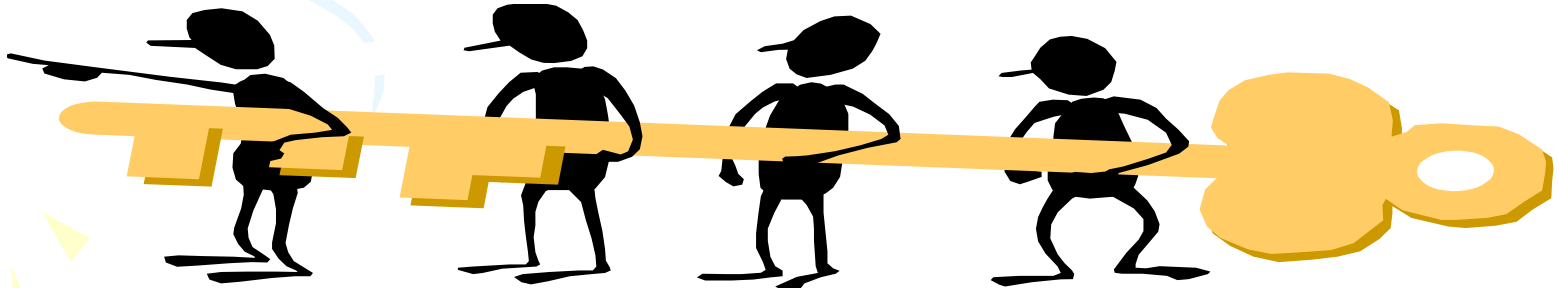
How ICCP interfaces with EI/ECSE/SPED

- Referrals
- Documenting need
- Supporting stable child care in preschool and before/after school placements
- Help facilitate and connect services



Child Care Consultation

- We can:
 - Support caregiver's problem solving and planning skills
 - Share creative ideas for accommodations
 - Explore strategies
 - Exchange information and resources



Training

ICCP can provide free training to groups on selected topics such as:

- Inclusive practices
- Sensory integration strategies
- Advocacy and collaboration skills
- Executive functioning





- Enhanced supports are available to providers who have a child enrolled in ICCP.
 - Double support \$\$ for providers

Improving collaboration between child care and EI/ECSE/SPED



- Identify and build on existing partnerships between families, special education services and child care
- Clear guidance on policy for EI/ECSE supports & services in typical settings
- Improve coordination between programs to address children's educational/developmental goals together with family child care needs
- Shared efforts to increase quality child care placements
- Increase individualized consultation between EI/ECSE/SPED and child care

Inclusive Child Care Program



Oregon Council on
Developmental Disabilities

Melinda Benson
Program Coordinator

melinda.m.benson@state.or.us

971/673-2996