



Partnering for Equity 



**EARLY  
WORKS**  
Transforming Education Together



# The Early Works Initiative

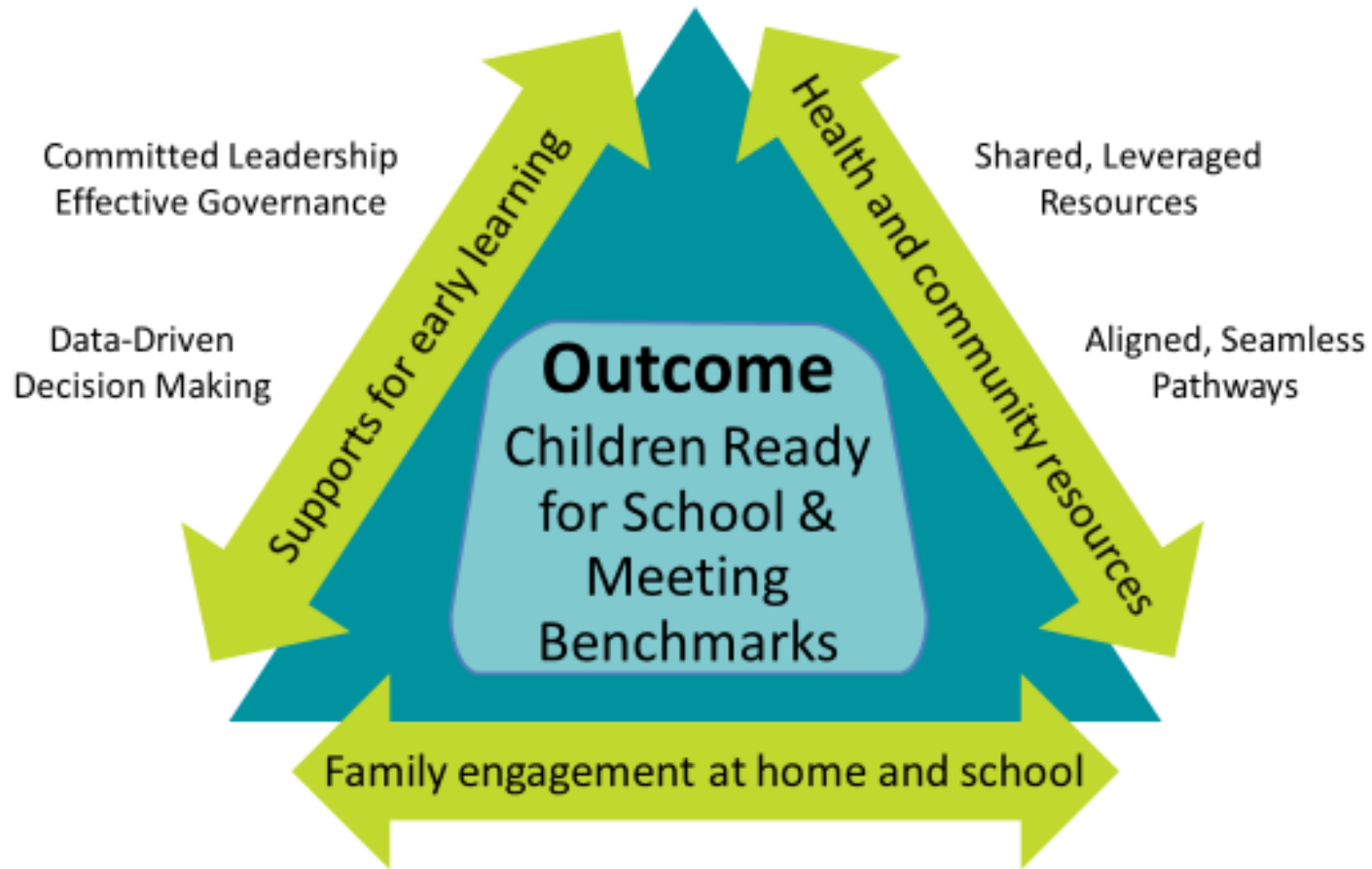
is guided by a set of key principles, including:



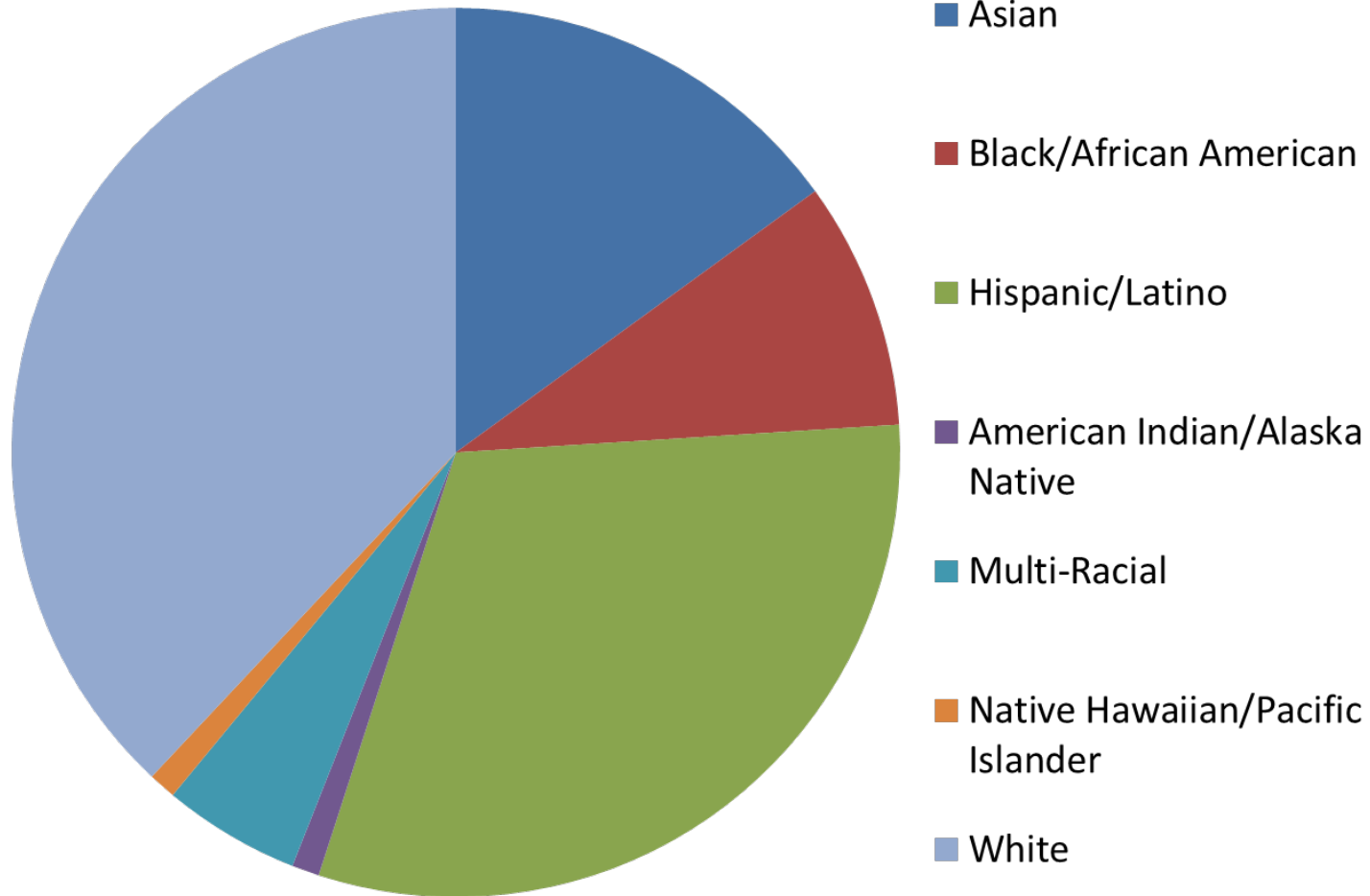
These principles guide the Early Works family engagement activities



# Elements of an Effective Prenatal to Grade 3 System



# Earl Boyles School Demographics



# Earl Boyles School Profile

English language learners	<b>40%</b>
Economically disadvantaged	<b>82%</b>
Students with disabilities	<b>15%</b>
Languages spoken at school	<b>20</b>



# School Transformation



# Equality



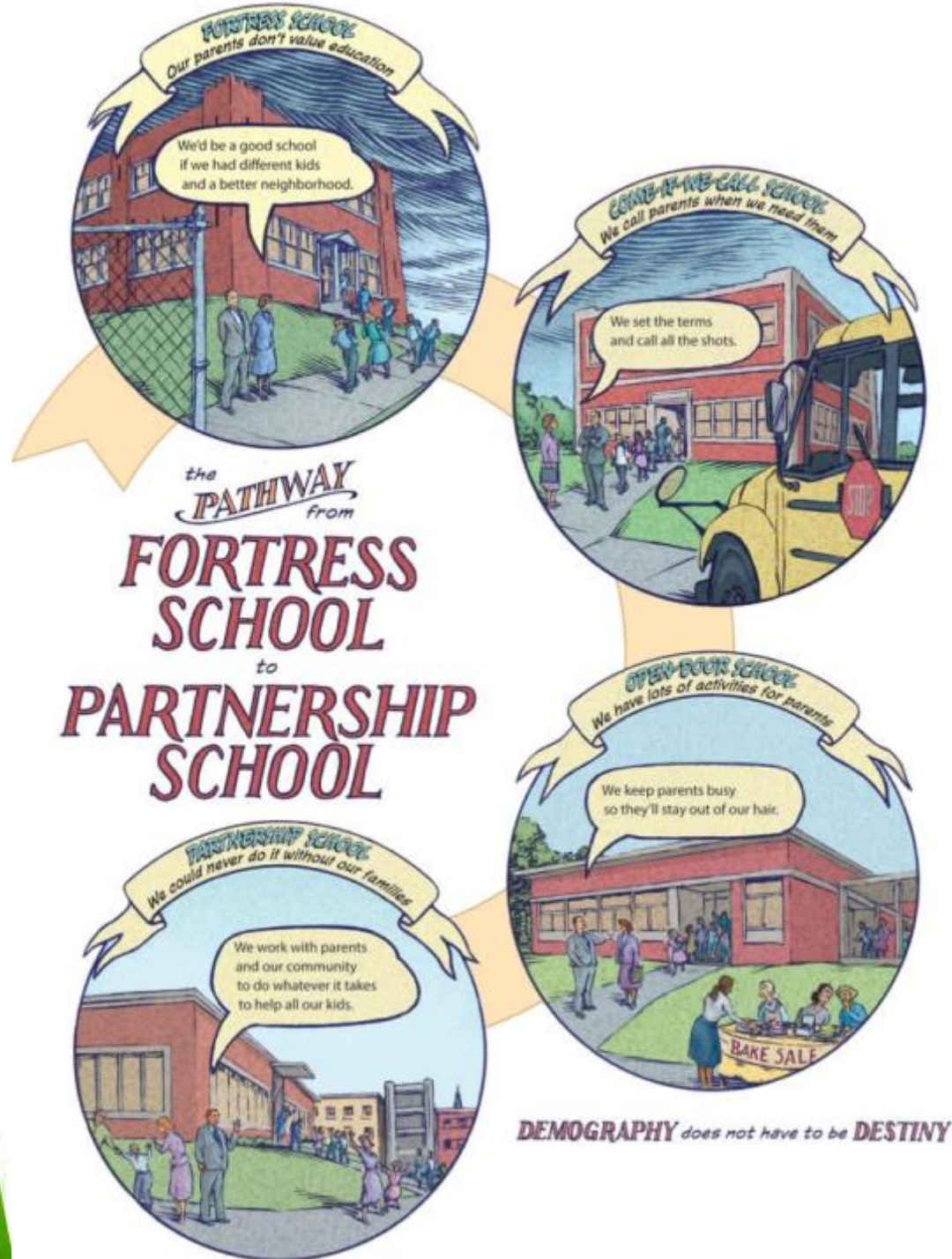
# Equity



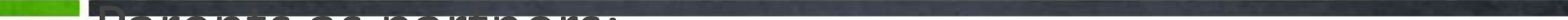
**“Equity and excellence can’t be divided.”**

Ernest L. Boyer

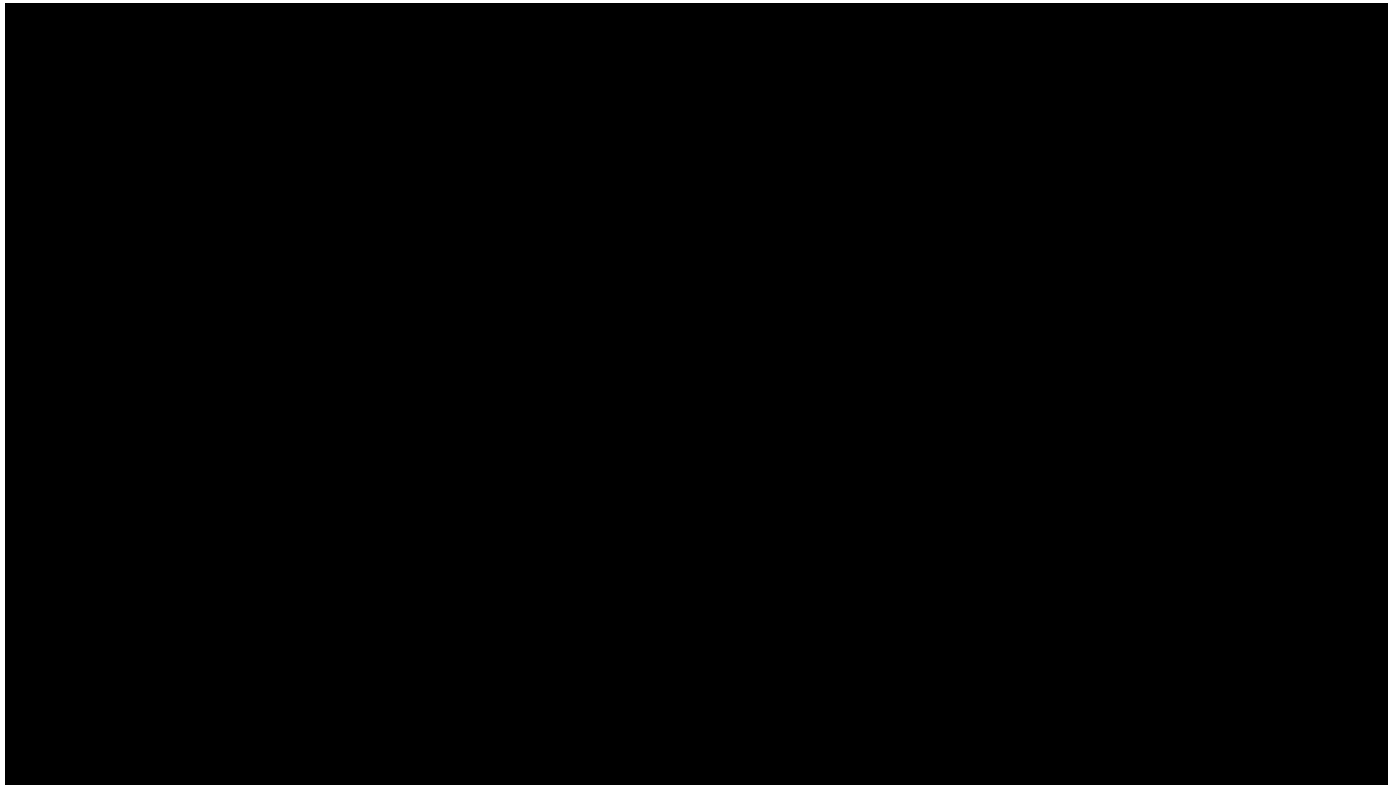
# Partnering with Families







Parents as partners:  
Engaging families in schools



## Findings

- Family-friendly recreational opportunities
- Central meeting places for families
- A sense of “cohesion”
- Services for children and families
- Quality child care and preschool



# Early Works School Readiness Strategies



- Infant and toddler play groups
- School-integrated and aligned preschool program
- Early kindergarten transition program
- Shared professional development to connect the early years to the early grades

# Engaged Families



# Family Engagement Activities



- Developing parent leaders
- Parent-teacher home visits
- Parent organized events and programming
- Culturally relevant and inclusive services
- Partnering with families to improve attendance and reduce chronic absenteeism

# Preschool Curriculum Night



# Parents United Leadership Development

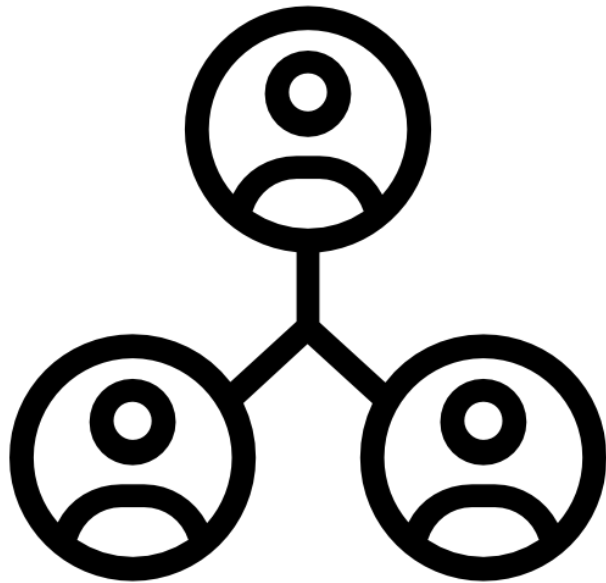


# Parent Advocacy: City Budget Hearings





# Reflecting and connecting in teams



In groups of 3-4, please discuss:

*From your position, what can you do to **engage families**:*

- *as leaders*
- *as partners*
- *who are traditionally excluded*

# Partnering for Preschool



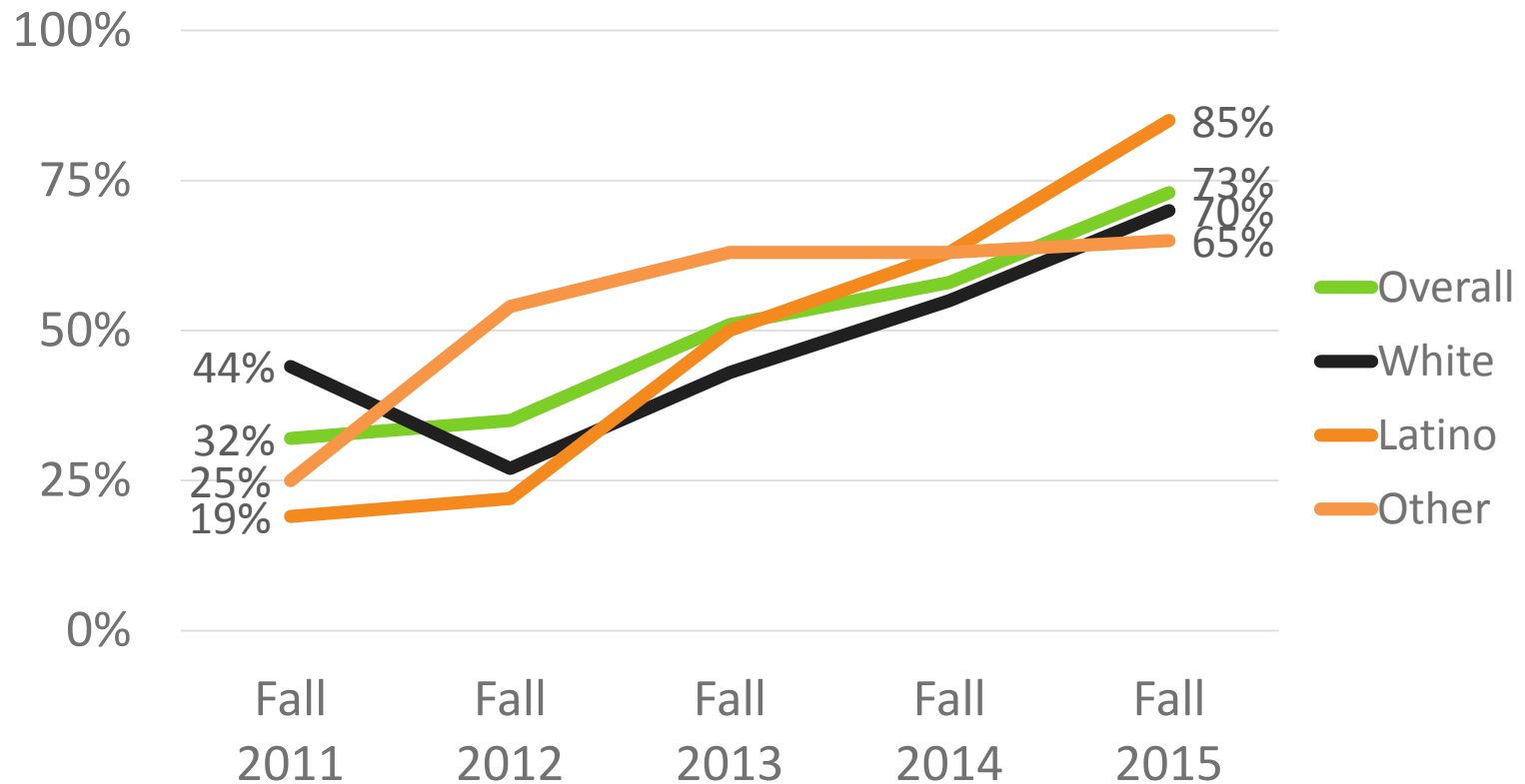


*The Promise of Oregon: David  
Douglas Early Learning Initiative*

# Earl Boyles Preschool

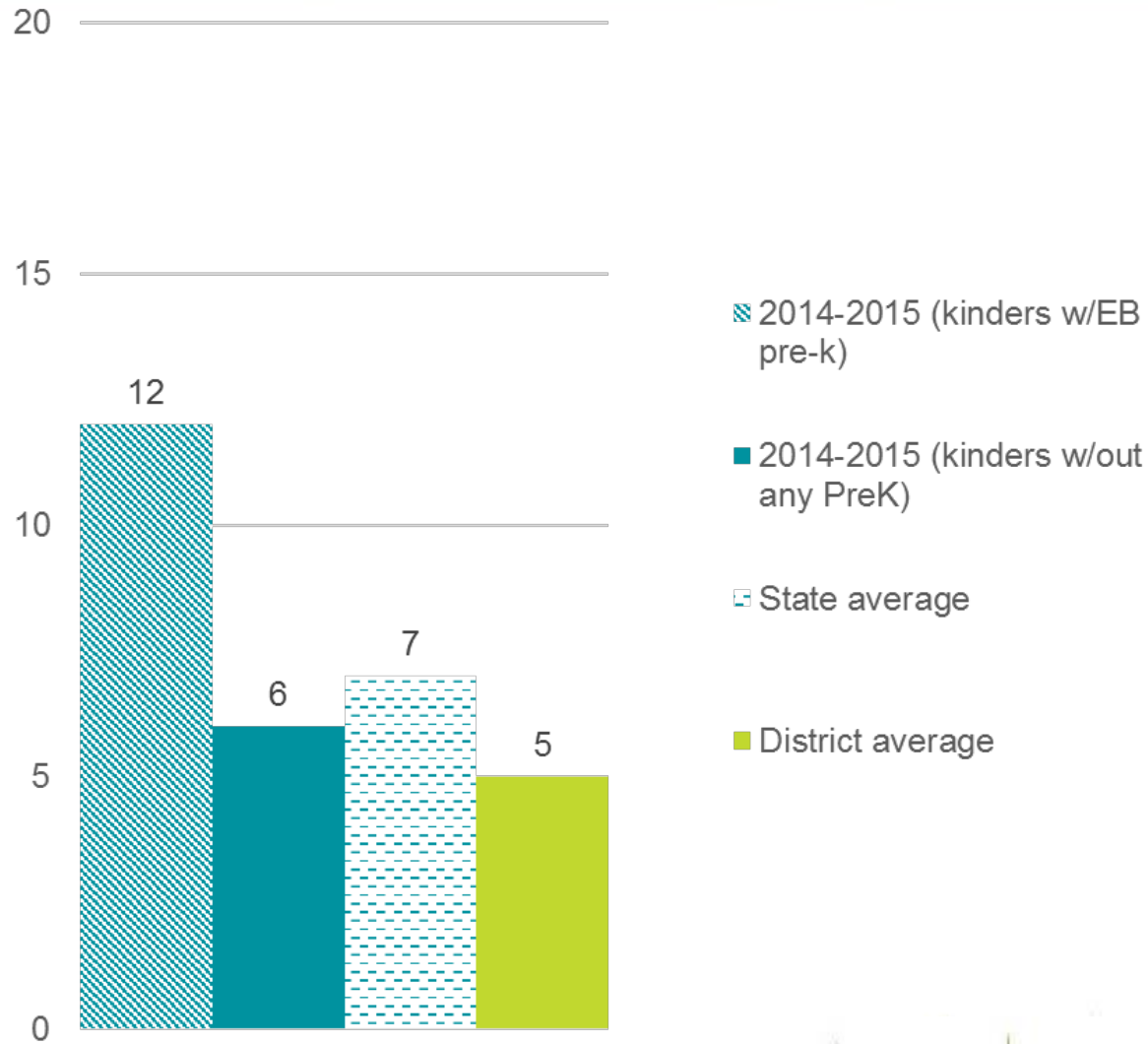


## More Kindergartners are entering school with Preschool

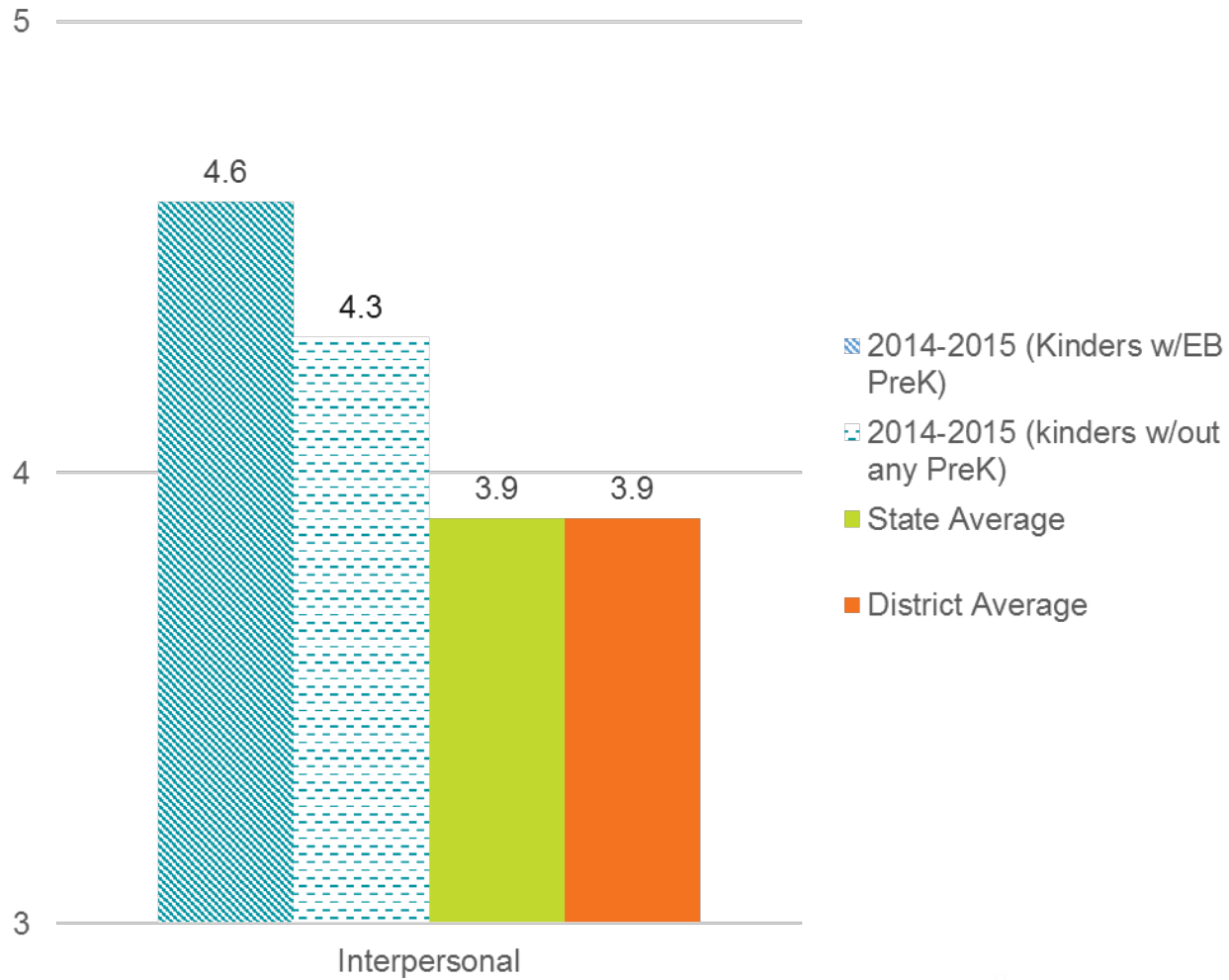


Source: Portland State University Parent Survey

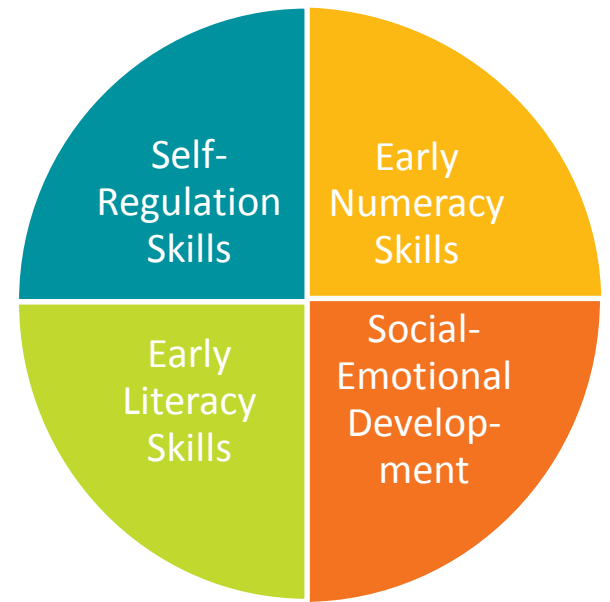
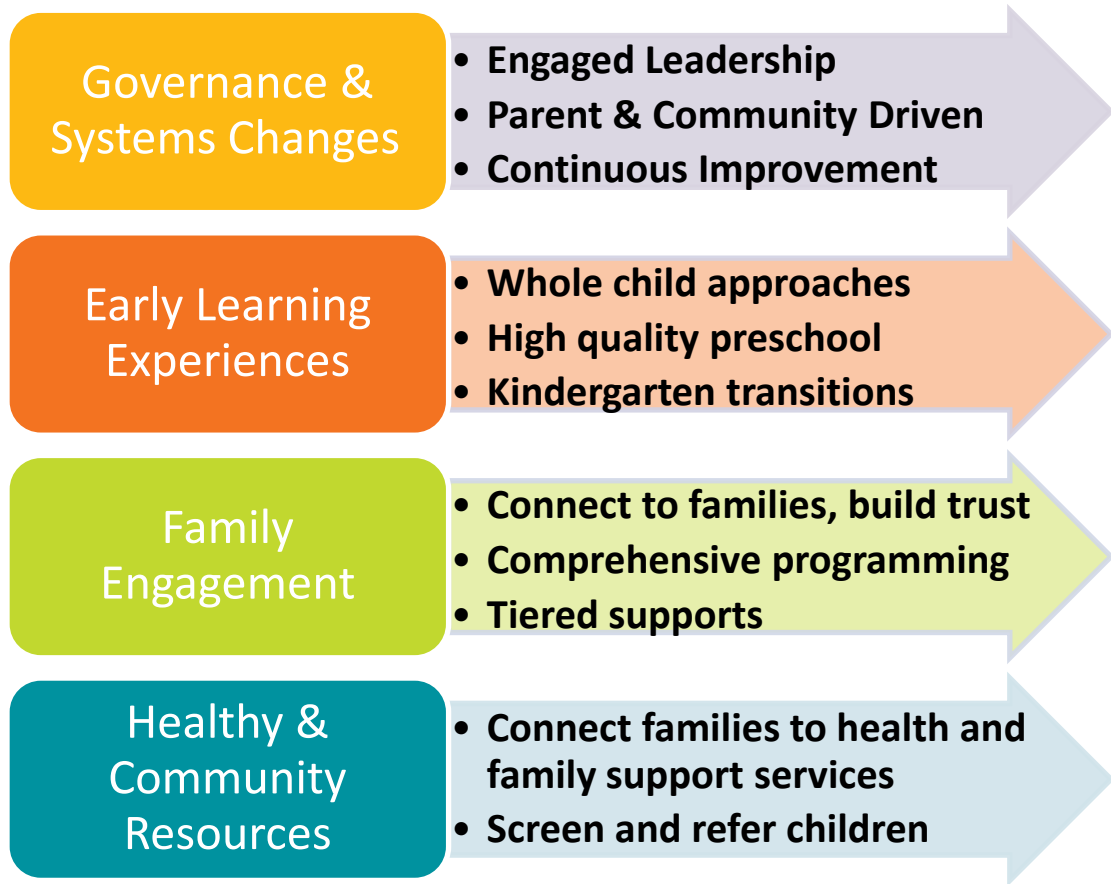
# Kindergarten Readiness Skills in Early Literacy



# Kindergarten Readiness skills: Interpersonal Social Skills



# Transforming systems to improve outcomes



**School Readiness Outcomes**



