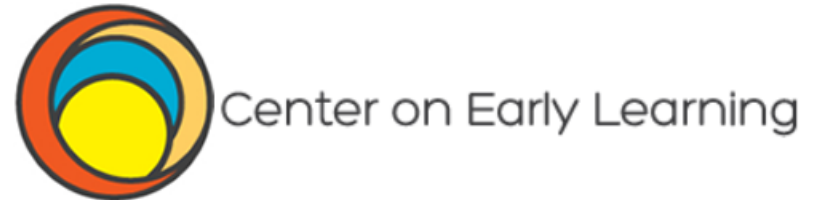


# Overview of Oregon's Quality Rating and Improvement System (QRIS)

2016 COSA

Portland, Oregon  
November 17, 2016





Hannah Anonson  
[anonsonh@wou.edu](mailto:anonsonh@wou.edu)

Cori Brownell  
[brownec@wou.edu](mailto:brownec@wou.edu)



Overview

# OREGON'S QRIS



# Oregon's QRIS Purpose

- Funded as part of Race to the Top Early Learning Challenge federal grant.
- Raise the quality of child care and early learning programs.
- Provide resources and supports to improve programs.
- Recognize program quality through a rating system.
- Help programs serve and support needs of all children.

# What is QRIS?

**Q** = Quality

**R** = Rating

**I** = Improvement

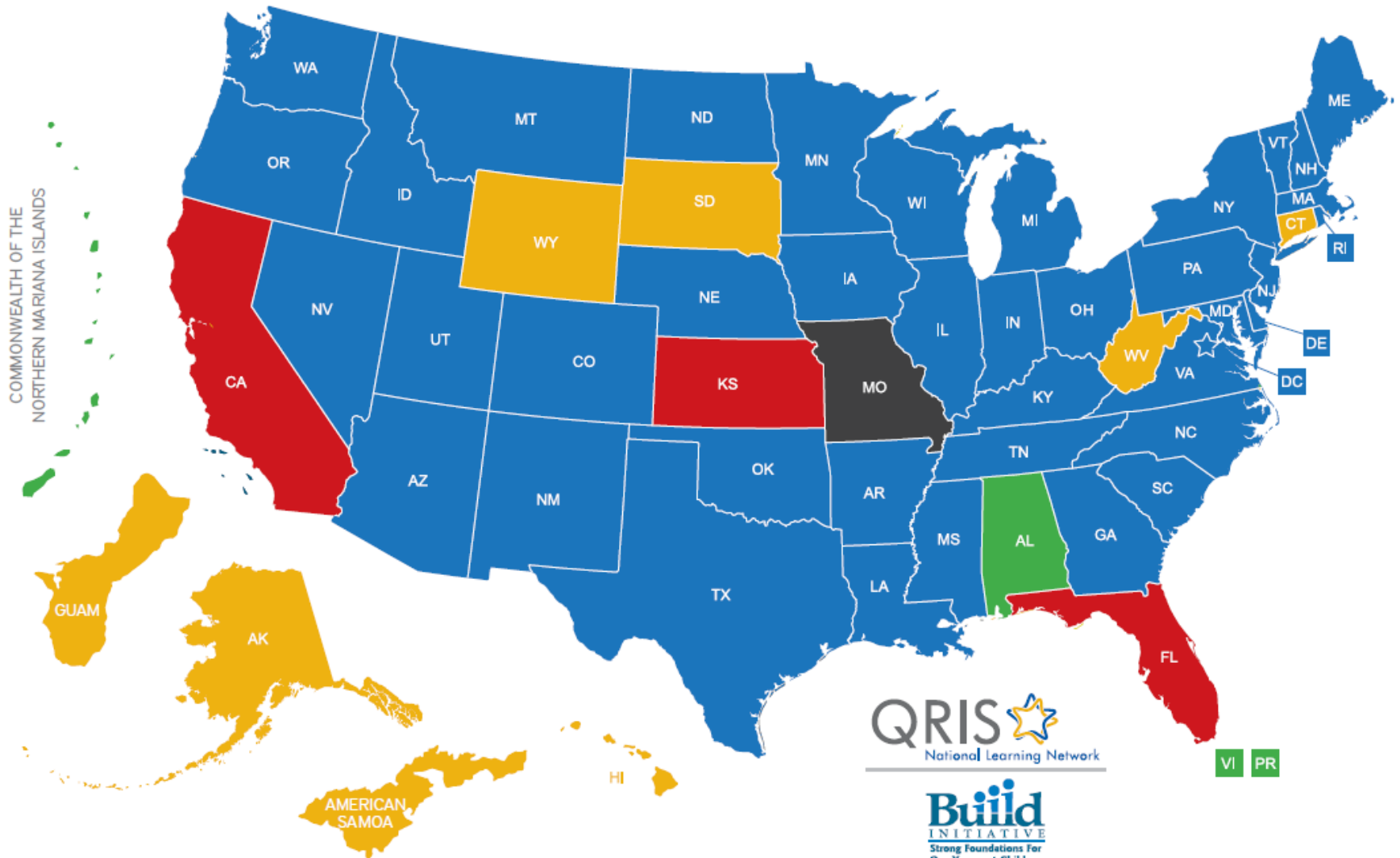
**S** = System

**QRIS** = Quality for Better Outcomes for  
Children in Oregon



# Current Status of QRIS in States

February 2015



- Statewide
- Counties/Localities/Regions
- Pilot
- Planning
- Requires Legislative Action to Implement a QRIS

# QRIS in Oregon

- Applied for first round Race to Top funds
- Awarded funds in second round
- QRIS pilot rolled out February 2013
- QRIS field test available statewide March 2014

# Oregon Partners





# QRIS Components

**Building Block with 5 Tiers**

**5 Domains**

**Multiple Versions of Materials**

## Quality Improvement

**Quality Improvement Plans**

**Self-Assessments**

**Supports**

## Quality Rating

**Portfolio System of Documentation**

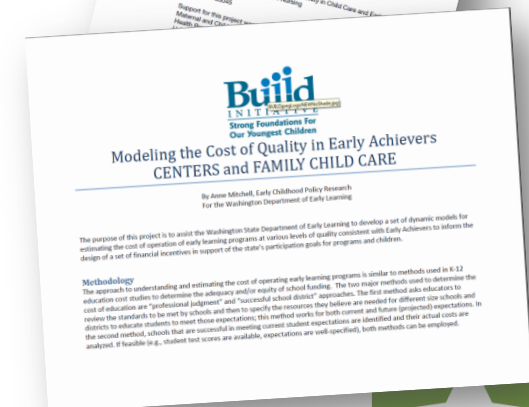
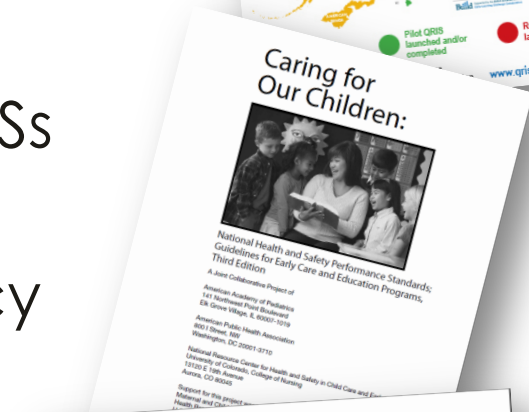
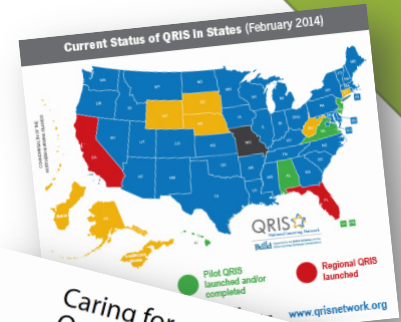
**Incentives**

# Oregon's QRIS 5 Tier Building Block System



# Sources of Input to the Standards Development

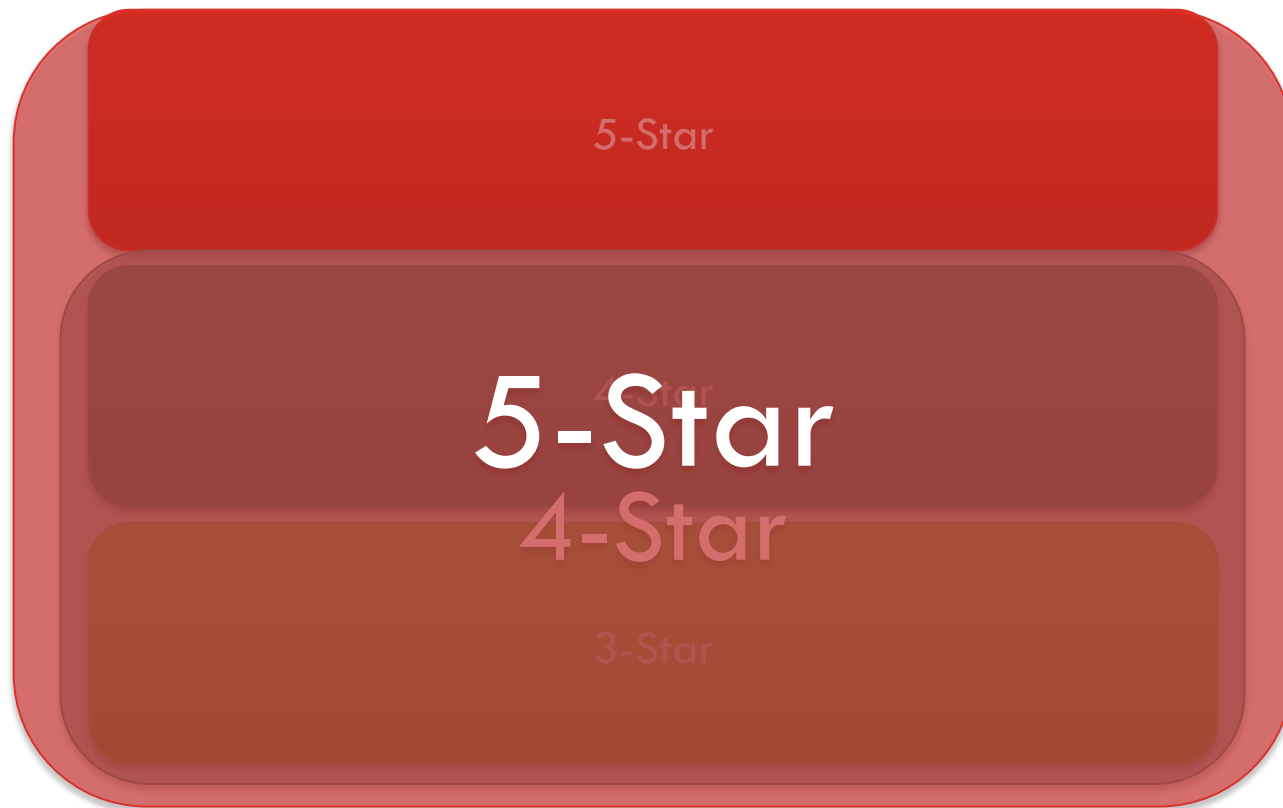
- Review of research and best practices on early childhood care and education
- Caring for Our Children Standards
- Research and evaluation from QRISs around the nation
- Cultural and Linguistic Competency Technical Assistance from Build Foundation
- Race to the Top Grant Feedback
- Cost Modeling from national QRIS experts



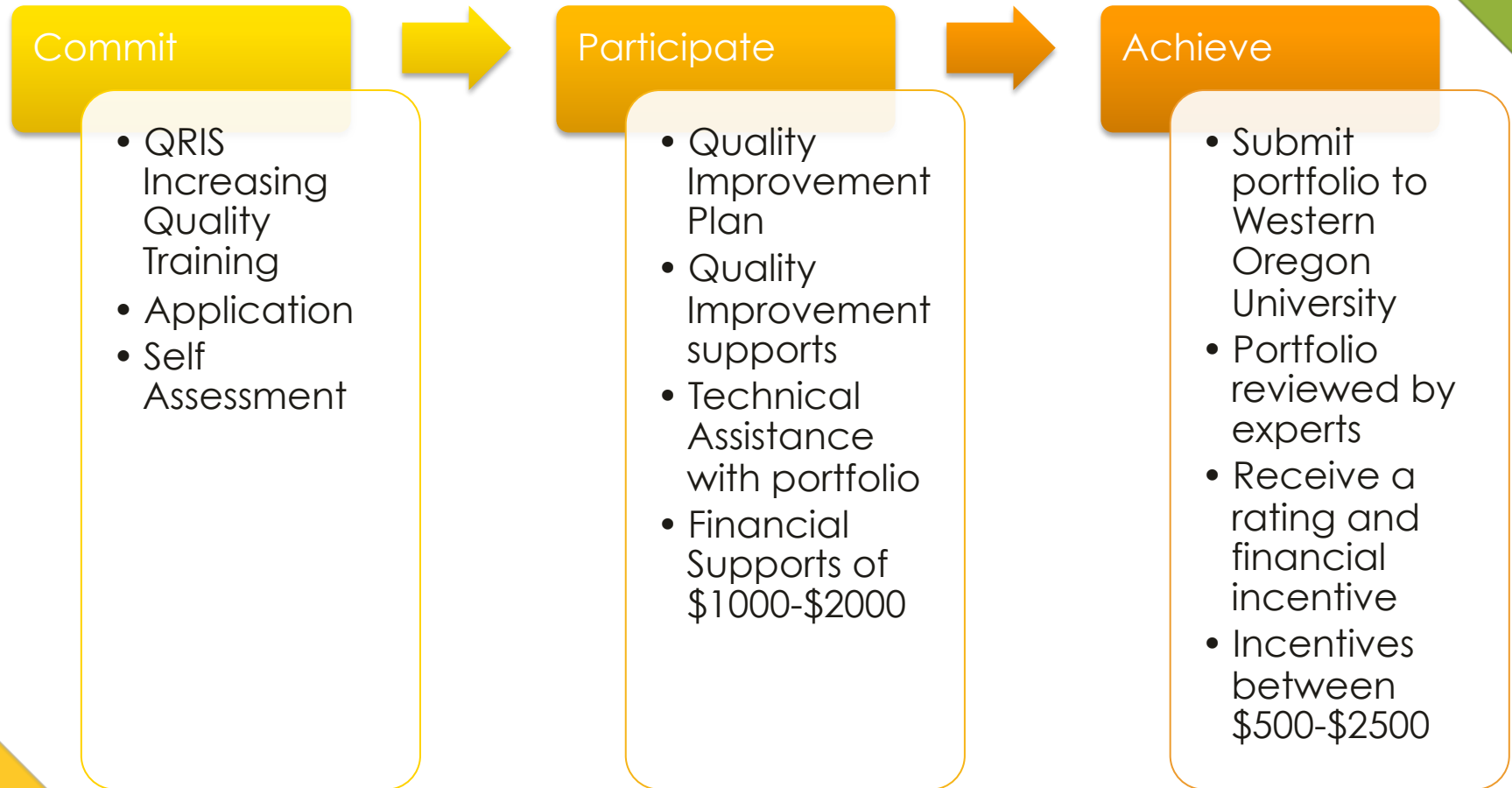
# QRIS Domains and Standards

<b>Children's Learning and Development</b>	• 12 Standards
<b>Health and Safety</b>	• 6 Standards
<b>Personnel Qualifications</b>	• 5 Standards
<b>Family Partnerships</b>	• 4 Standards
<b>Administration and Business Practices</b>	• 6 Standards

# Star Level Indicators: Building Block

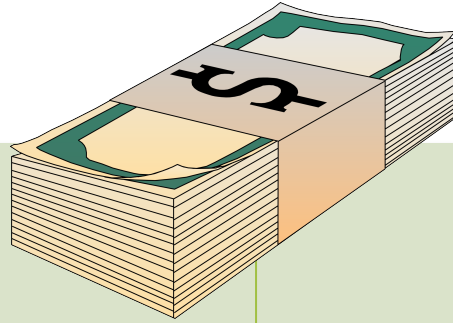


# Basics of the QRIS Process



# SUPPORTS AND INCENTIVES

# Guiding Principle



Supporting  
programs



Rating  
programs



# QRIS Supports

- Oregon QRIS Resources Website
  - [oregonqrisresources.org](http://oregonqrisresources.org)
- Quality Improvement Specialist supports
- Portfolio supports
- Forums and web-based supports
- Financial supports

# **RATING/PORTFOLIO REVIEW PROCESS**



# Portfolio System

- Evidence – measureable indicator of program quality
- Balance of evidence
- Type of evidence specified in portfolio
- Reviewed by experts

# Feedback to Programs

- Feedback on EVERY indicator attempted but not achieved
- Feedback is given on portfolio organization
- Feedback guides resubmission
- All programs eligible for simplified resubmission process

# Resubmission and CQI

- On initial submission, about half of reviewed portfolios achieve the star rating they were seeking
- Almost 90% receive star designation upon resubmission

# Quality Maintenance

- Ratings are good for 3 years
- Programs must maintain compliance requirements
- May resubmit for higher rating at anytime

# Locating Rated Programs

<http://triwou.org/projects/qris/programsearch>



HOME ABOUT GROUPS LIBRARY PROFESSIONALS FAMILIES **RATED PROGRAMS** QRIS HELP

## Oregon's QRIS Rated Program Search

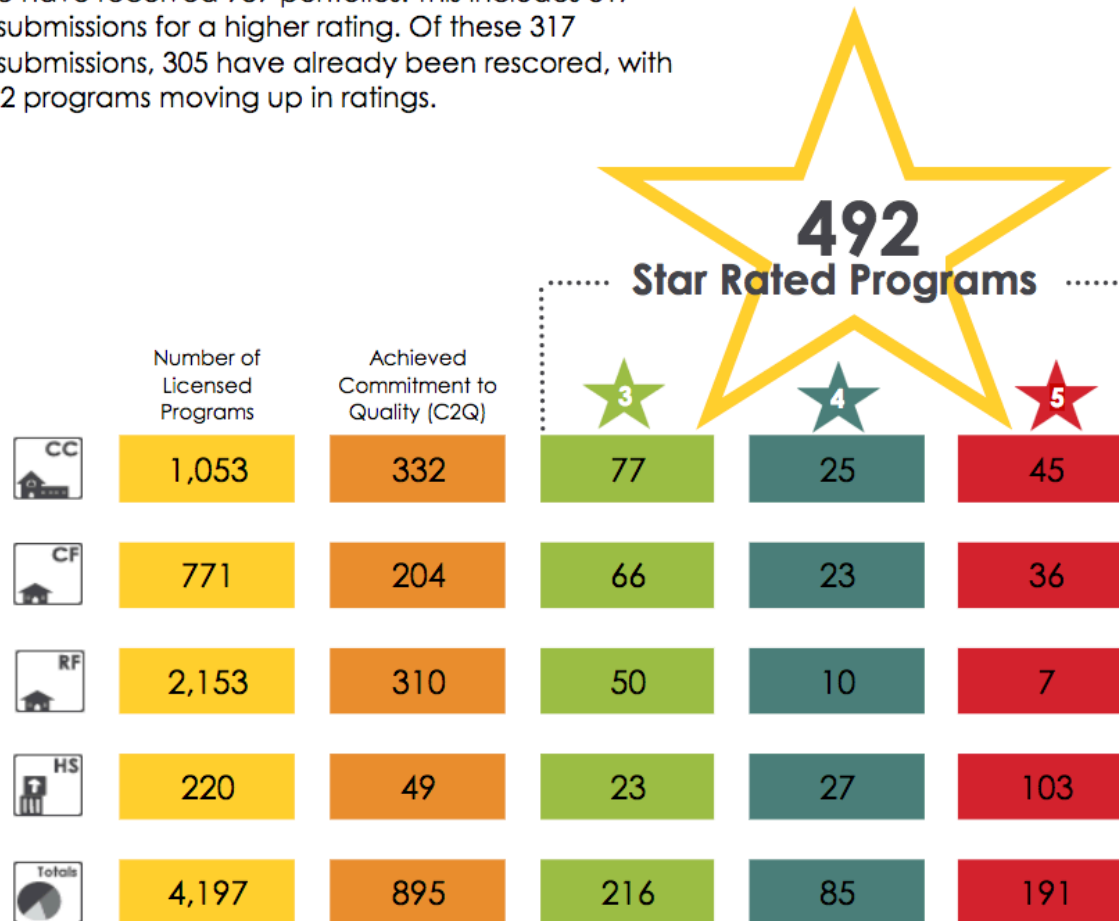
Search here to find child care in your area. Please note that this is not a comprehensive list of programs in your area: It reflects only programs that applied for a Commitment to Quality designation or a star rating in the QRIS.

Though the QRIS is intended to be a measure of quality, inclusion on this list does not necessarily constitute endorsement from the Center on Early Learning, The Research Institute, or Western Oregon University.

The ratings on this list are updated on a monthly basis.

## Oregon's QRIS

We have received 989 portfolios. This includes 317 resubmissions for a higher rating. Of these 317 resubmissions, 305 have already been rescored, with 262 programs moving up in ratings.



**CC** = Certified Center; **CF** = Certified Family; **RF** = Registered Family; **HS** = Head Start



# Resources

- Local Child Care Resource and Referral Agency
- 211info Child Care

# QRIS Revisions

- Field Test Ending
- Revised System 2017



# For More Information on QRIS

[www.oregonqris.org](http://www.oregonqris.org)



Questions?