



Serving Rural Children by Building Community Trust

Jan Zarate
Yoncalla School District Superintendent

Erin Helgren
Yoncalla Early Works Site Liaison
Children's Institute



**EARLY
WORKS**
Transforming Education Together

Presentation Objectives:

1. Share what have we learned about school readiness in Yoncalla.
2. Understand how can sharing data with families builds trusting relationships?
3. Learn strategies for welcoming parents to the table and building partnerships.
4. Discuss opportunities for public schools to connect to partners already embedded in the community,

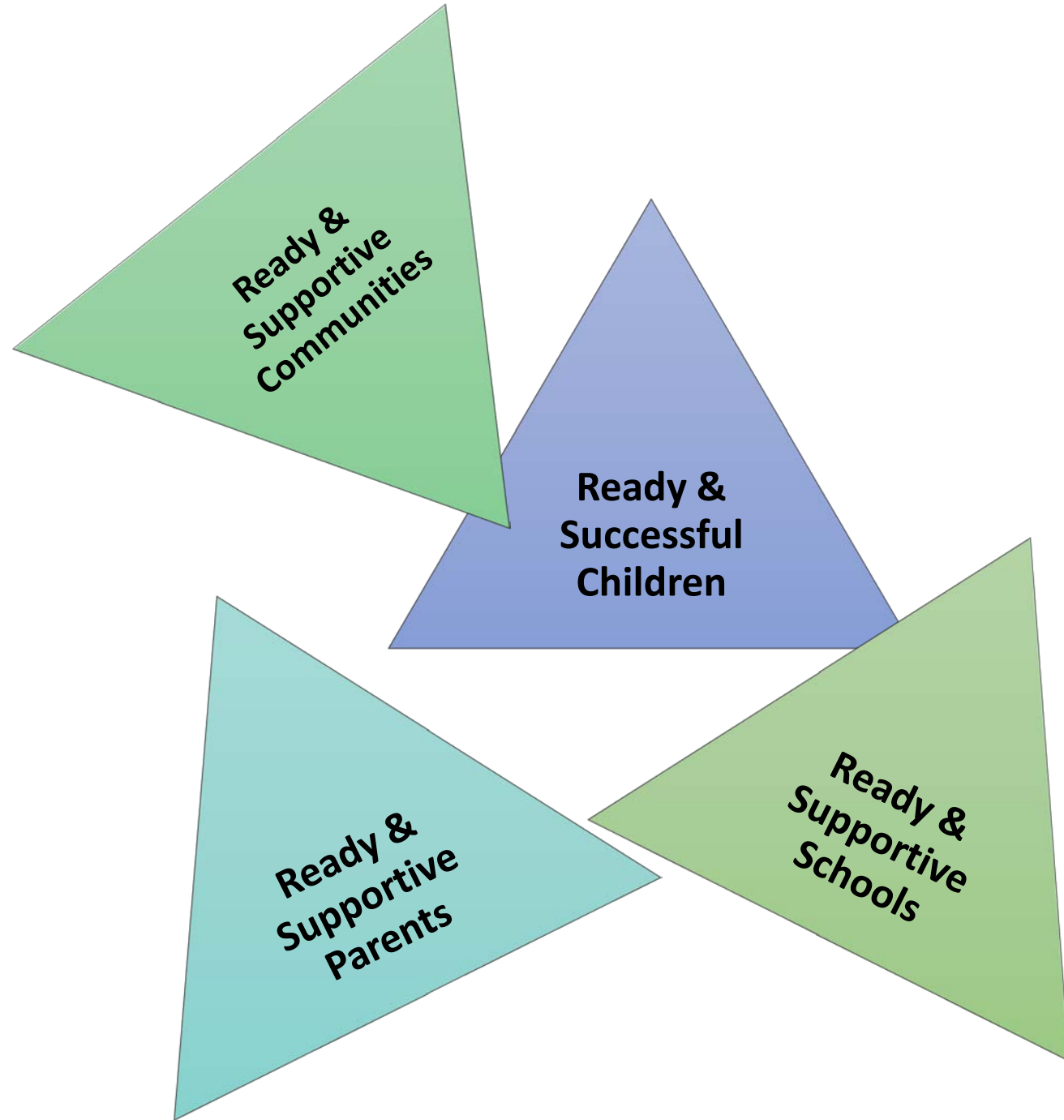




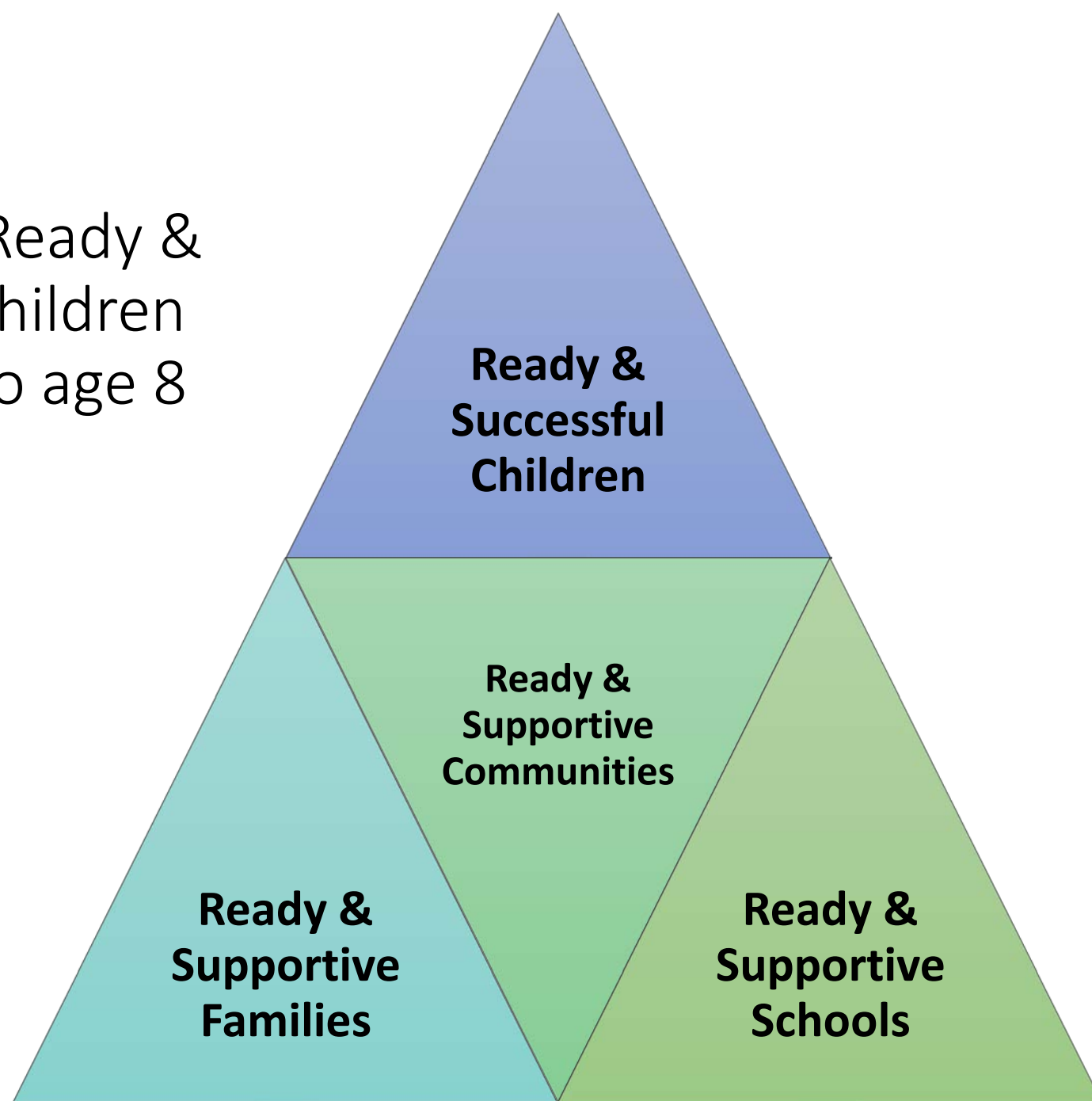
Our Vision



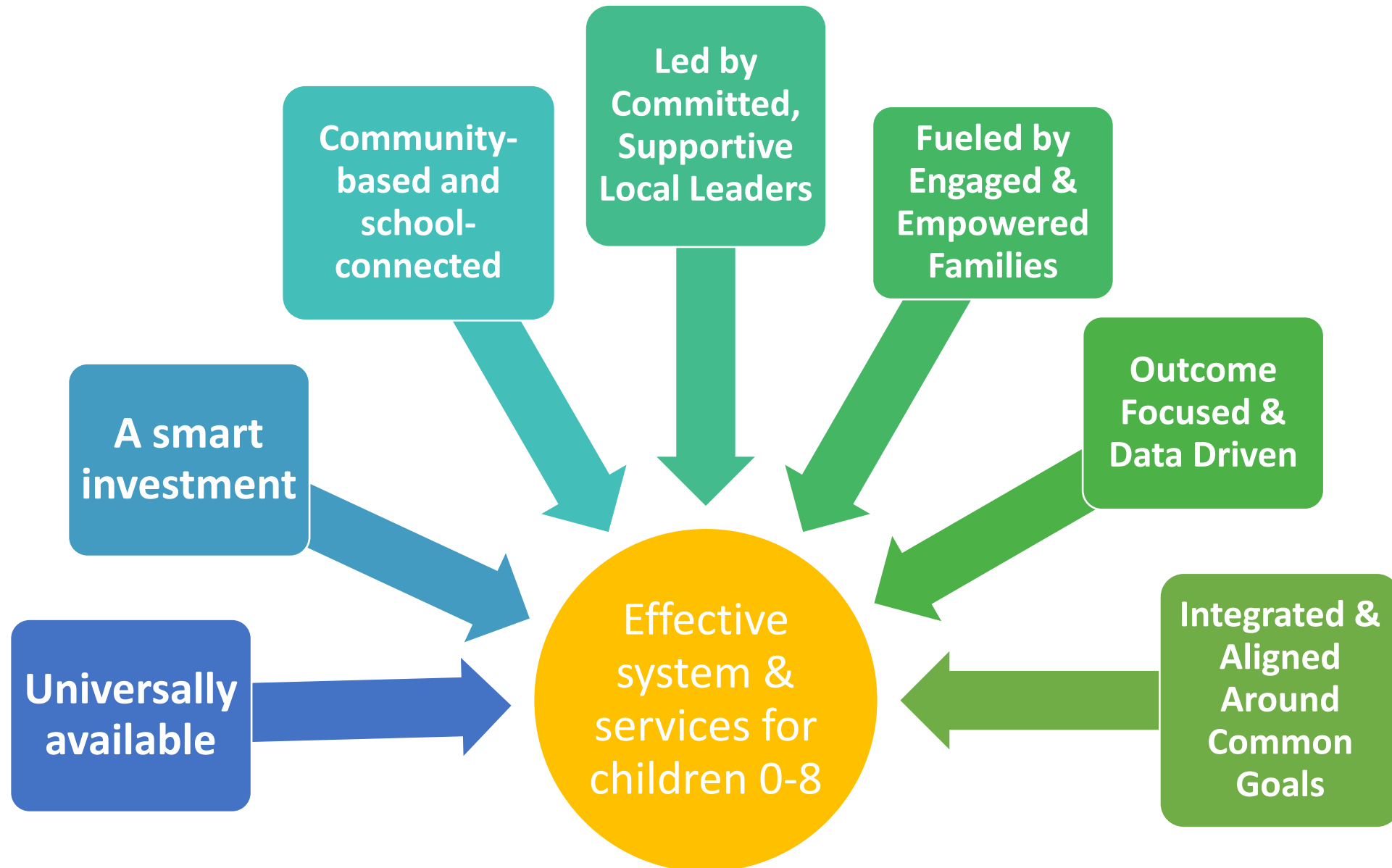
A community of healthy, thriving kids who become successful adults.



Supporting Ready &
Successful Children
From Birth to age 8



Guiding Principles

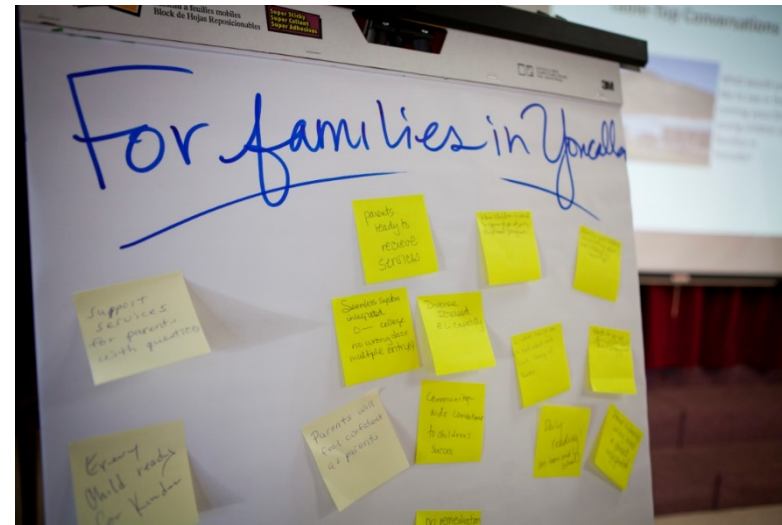


How We Do the Work



Initial Data Indicated

- Lack of trust/connection to school
- No interest in home visiting
- Little interest in preschool
- Families want more community based activities to do with their children.
- Children not read to regularly
- Children start school with low self regulation/social skills



Trust is foundational for success!!

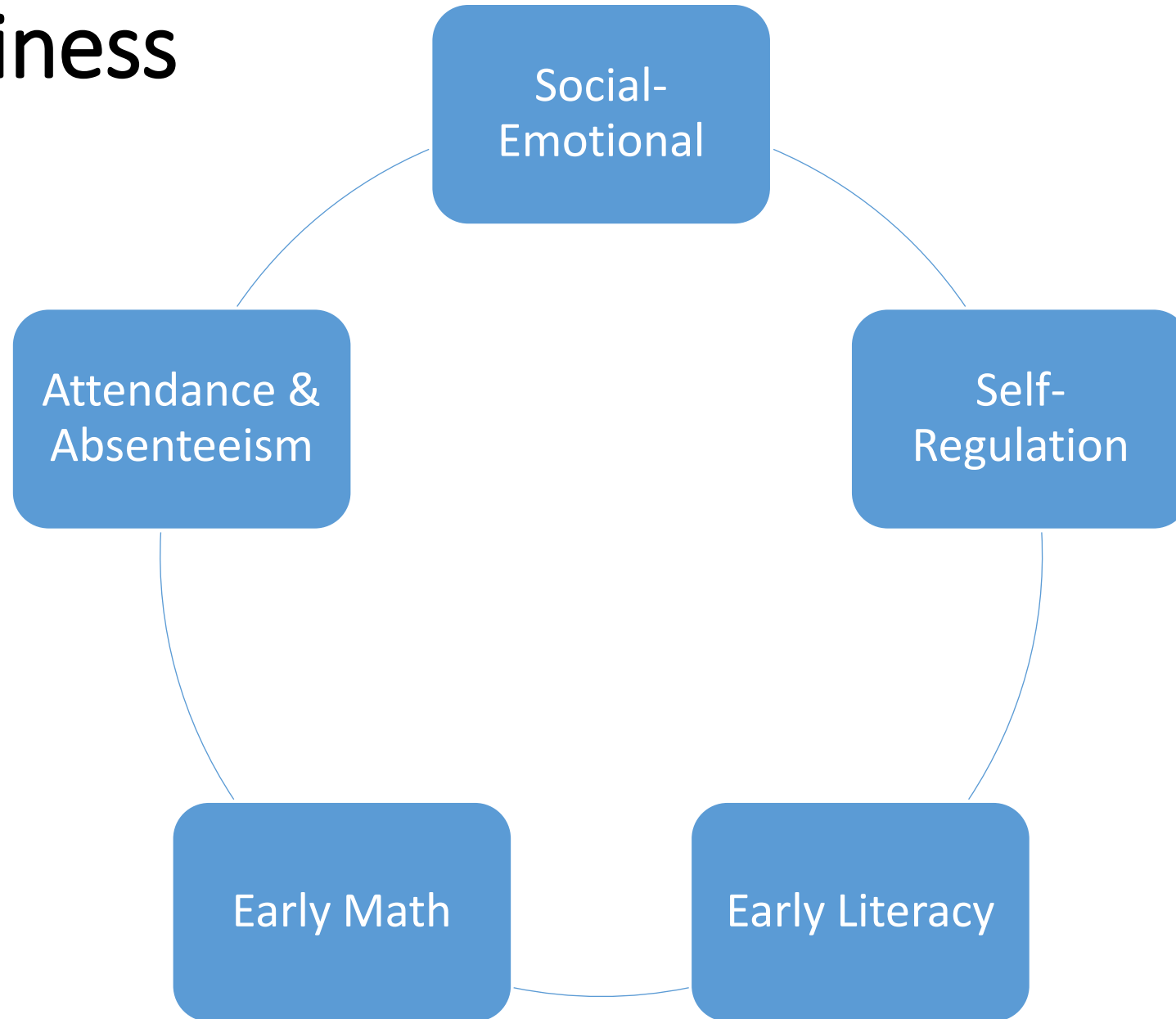
How do you build trust with families?

Transparency with data

- Community cafe
- Annual retreat
- Leadership Team meetings
- Community friendly documents

Create opportunities for informed decision making

Key Areas of School Readiness



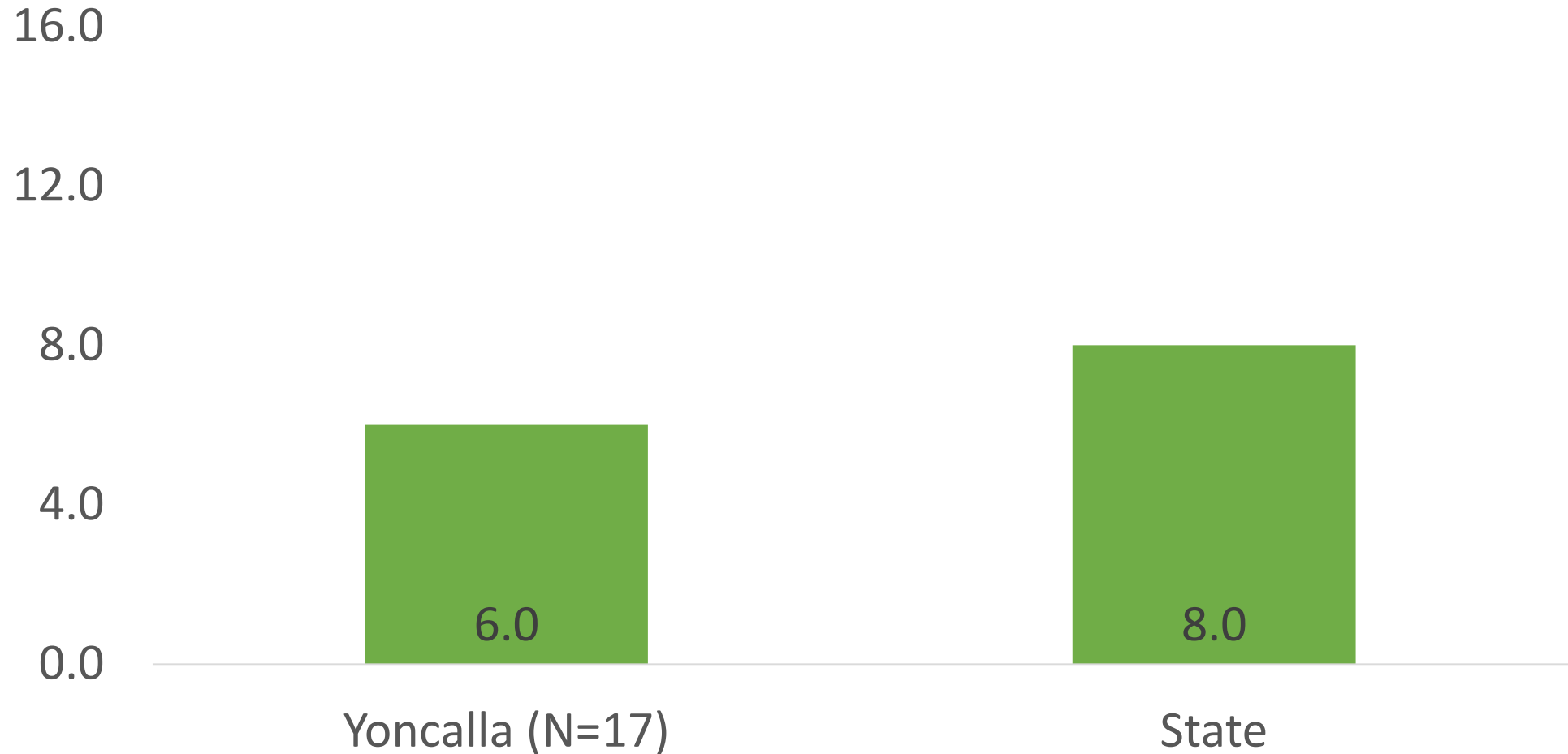
Research tells us early math is important

Things like:

- Counting
- Adding with fingers
- Recognizing shapes and patterns
- Knowing concepts like:
up/down, inside/outside,
shortest/longest, most/fewer



On average, kindergartners in Fall 2015 were **slightly behind** the rest of the state in early math.



Low hanging fruit.....

Engage and support existing programs

- Yoncalla Library
- Family Relief Nursery
- WIC

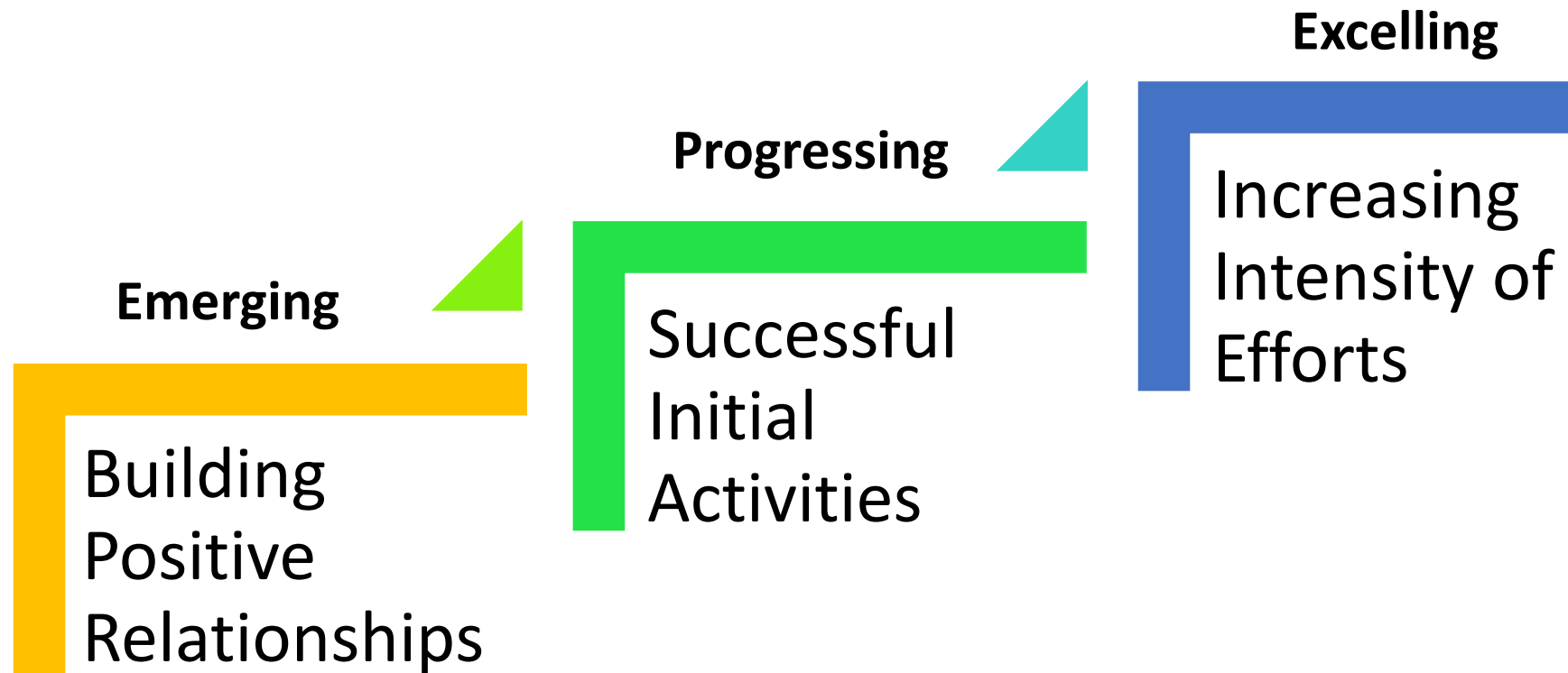


Building trust results in:

- TFFF Reading Project
- Evolution of playgroups to play-to-learn groups
- Increased participation in Early Kindergarten Transition program
- Universal Teacher Home Visits
- Normalized parent education classes
- Increased parental voices



Effective Work Develops Over Time



Sharing our lessons learned

- Expanded Regionally (NDP3)
- Shared professional development
- Summer play-to-learn groups
- Community Health and Needs Assessment
- Collaborated on Preschool Promise



Where are
we now?



Some Community Partners

Breastfeeding Coalition of Douglas County

Childcare Providers of Yoncalla

Douglas County Early Childhood Planning Coalition

Douglas Education Service District

Family Connections of Lane and Douglas Counties

Family Development Center/Healthy Families Oregon

Family Relief Nursery

Ford Institute Leadership Program, North Douglas Cohort

Parents of Yoncalla

Public Health Department/Nurse Family Partnership

UCAN Head Start/Early Head Start

United Communities AmeriCorps

Yoncalla Public Library