

Building Community through Daily Morning Meetings



Presented by
Robi Phinney

kahoot.it

Kahoot!

Game pin

Enter

MORNING MEETING GOALS

- **Build Community**
- **Improve Attendance**



Today's Agenda

- The 3 C's- Culture, Climate, and Community**
- Research around the issue of attendance**
- Morning Meeting Daily Routines**
- Questions, Discussion & Work time**

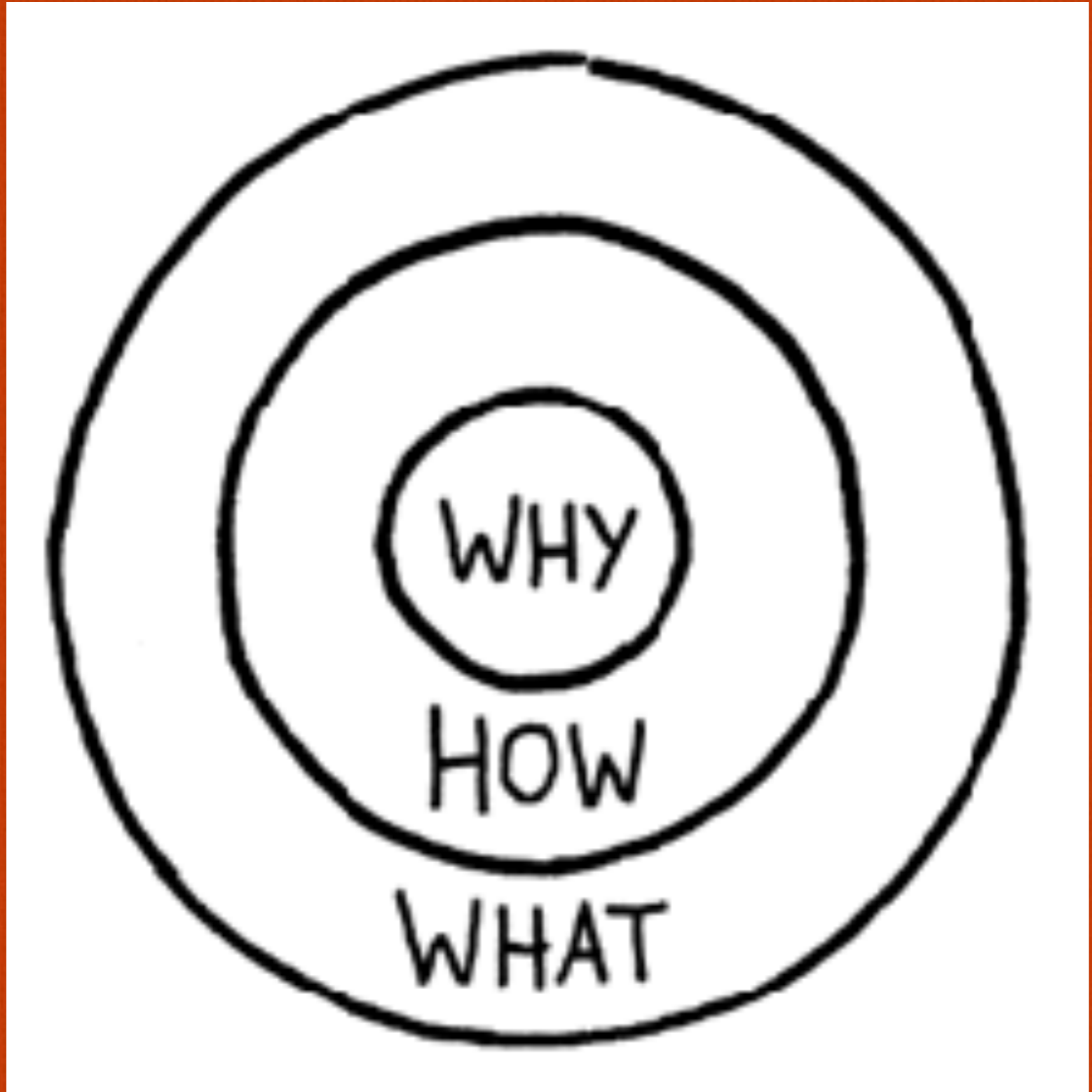
Community, Culture, Climate

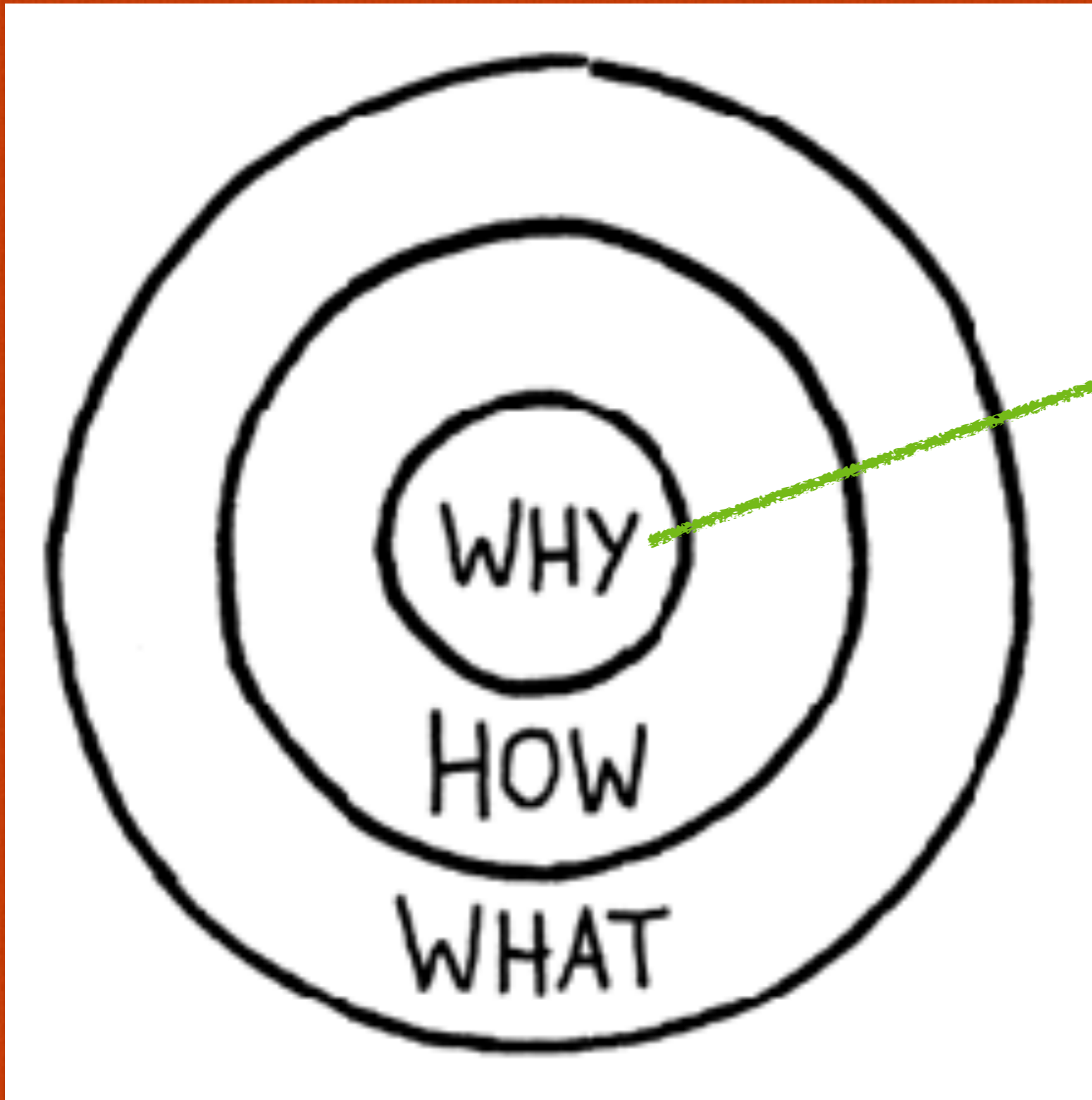
School **community** may be defined as a feeling of fellowship with others, as a result of sharing common attitudes, interests, and goals.

School **climate** may be defined as the quality and character of school life. It may be based on patterns of student, parent, and school personnel experiences within the school and reflects norms, goals, values, interpersonal relationships, teaching and learning practices, and organizational structures.

A school's **culture** is largely determined by the values, shared beliefs, and behavior of all the various stakeholders within the school community and reflects the school's social norms.

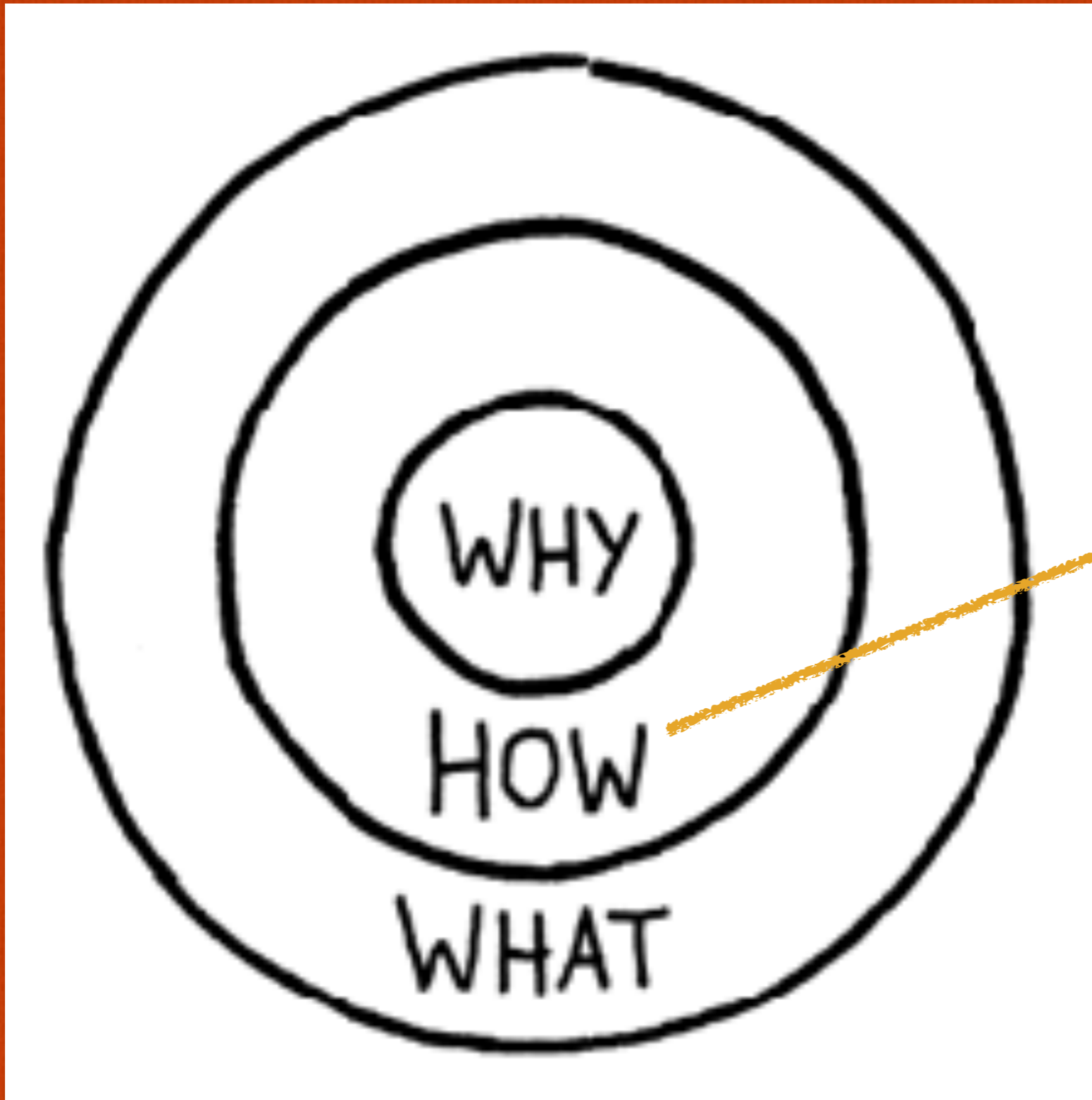
Source: <http://www.p12.nysed.gov>





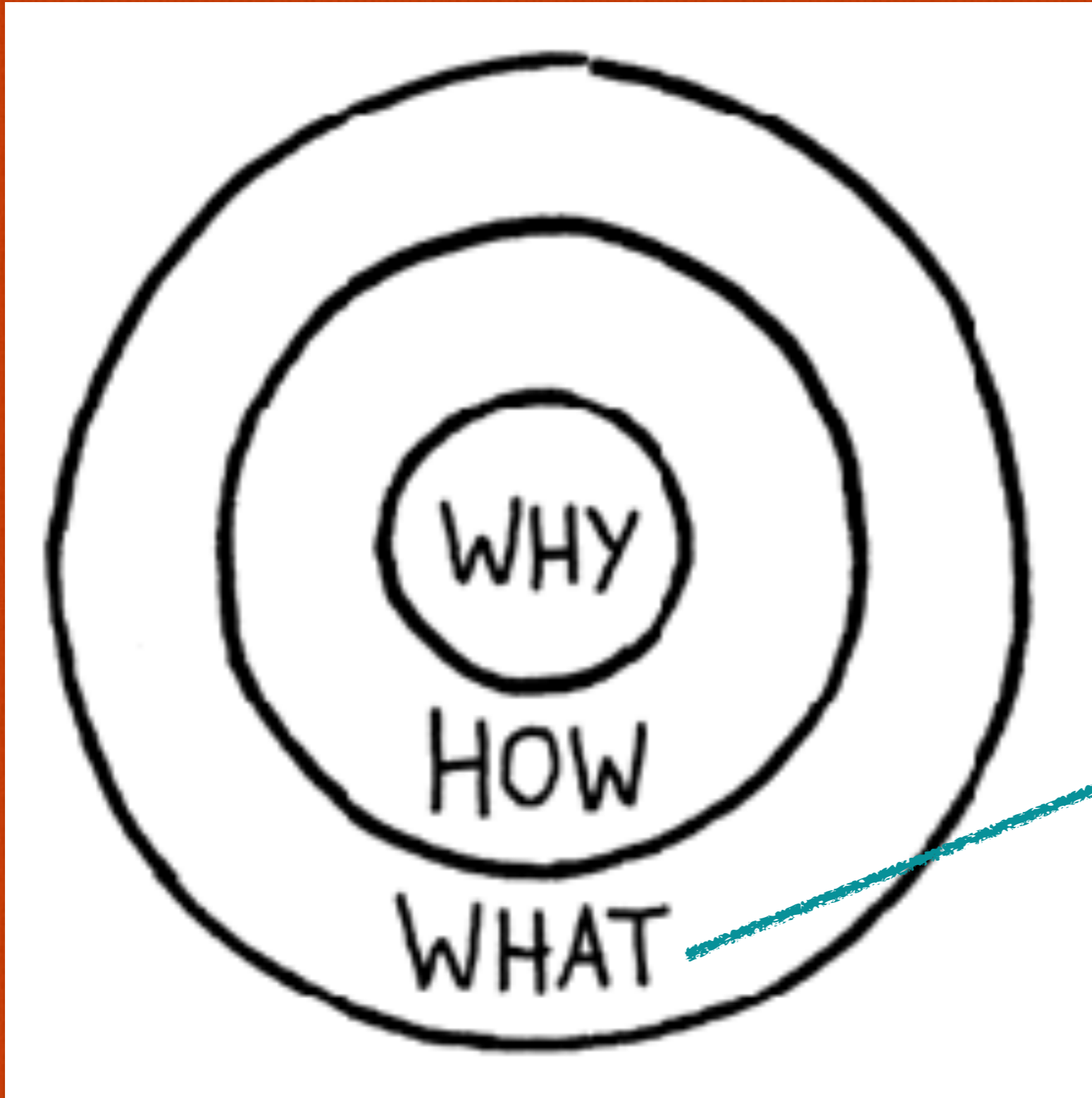
School Culture

**Improve:
Student Achievement
Graduation Rates**



School Climate

**Connected
Engaged
Safe**



**Build
Community with
Morning
Meetings**

Building School Community

“Students in schools with a strong sense of community are more likely to be academically motivated (Solomon, Battistich, Watson, Schaps, & Lewis, 2000); to act ethically and altruistically (Schaps, Battistich, & Solomon, 1997); to develop social and emotional competencies (Solomon et al., 2000); and to avoid a number of problem behaviors, including drug use and violence” (Resnick et al., 1997).

8 Ways to Build Positive School Culture

- 1. Build Strong Relationships**
- 2. Teach Essential Social Skills**
- 3. Shared Vision**
- 4. Be Role Models**
- 5. Clarify School Rules and Expectations**
- 6. Teach All Students Problem Solving**
- 7. Set Appropriate Consequences**
- 8. Positive Praise**

School Climate and Attendance



Why the Focus on Truancy?

“A school that does not attend to this factor, risks undermining all other efforts at school improvement.”

Robert Marzano, What Works in Schools

Attendance Research

- Chronic absenteeism –**

- **Missing 10% or more of school for any reason**

- **This includes: excused absence, unexcused absence, suspension, etc.**

Chronic Absenteeism is a strong indicator that a student will.....

- Become disengage**
- Fall behind academically**
- Fail courses**
- Drop out of school**

(Oregon Juvenile Crime Prevention Dropout Analysis, 2003)

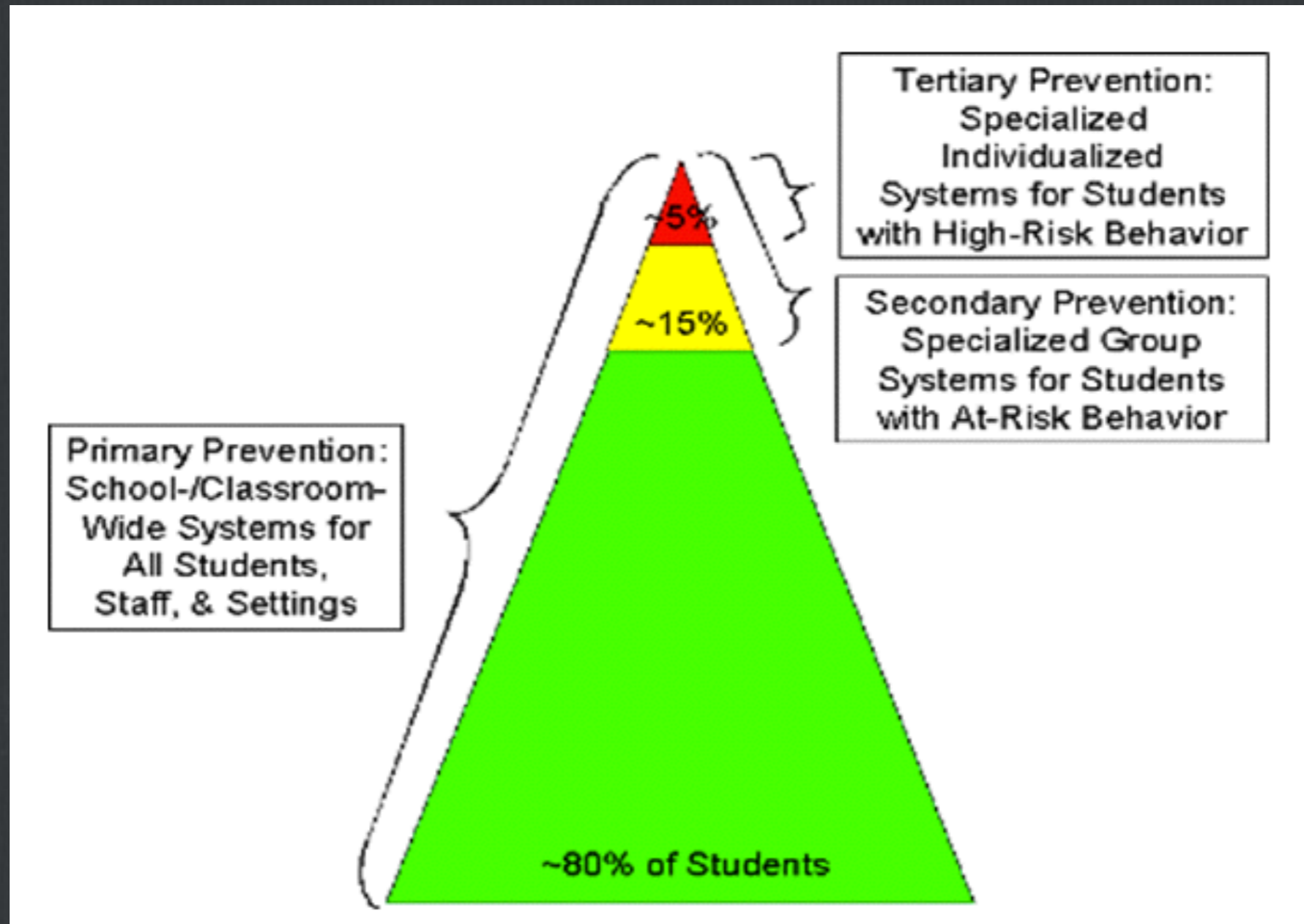
Effects of Chronic Absenteeism

- For the student – loss of instruction, engagement, etc.**
- For the class – teachers must continually catch students up**
- Significant increased risk of dropout**
- Link between chronic absenteeism and the criminal justice system**
- Life skill of dependability – so important as a predictor of job success**
- For students in poverty – are most likely group to be chronically absent**

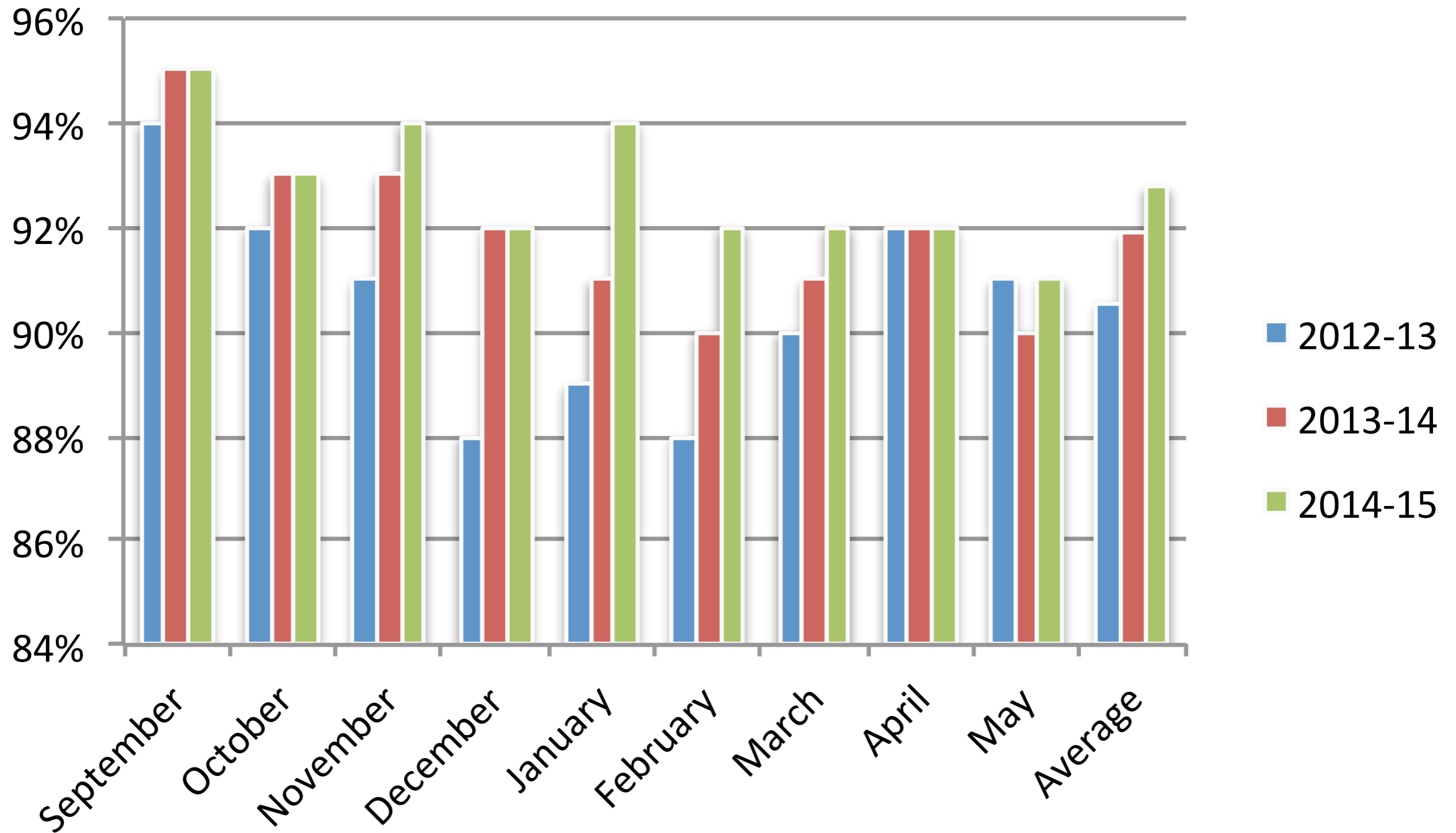
Actions

- Team Approach – data review, facilitation of interventions, follow up, etc.**
- Early Identification – data from previous year, end of September data, frequency trends by month and year**
- EWS – Early Warning System – Attendance, Behavior, and Grades**

Tiered Attendance Strategies



ATTENDANCE HISTORY



MORNING MEETING GOALS

- **Build Community**
- **Improve Attendance**
 - Student Recognition
 - Involve Students and Staff
 - Consistent Messaging
 - Make it Fresh and Fun!



MORNING MEETINGS

- Sets a tone of respect and builds a climate of trust
- Builds and enhances connects among students and between students and staff
- Merges academic, social, and emotional learning
- Motivates students by addressing the human need to feel a sense of significance and belonging, and to have fun
- Through the repetition of many ordinary moments of respectful interaction, enables some extraordinary moments

LA PINE MIDDLE SCHOOL

MORNING MEETINGS



MONDAY

BIRTHDAYS

SOCIAL EMOTIONAL LEARNING

GUEST SPEAKERS

GAMES

ANNOUNCEMENTS

Grit

Gratitude

Optimism

Curiosity

Zest

Social Intelligence

Self-Control

POWER CLAP

TUESDAY

THIS DAY IN HISTORY

COLLEGE DAY

TICKET DRAWING

ANNOUNCEMENTS

Teacher

Guest Speaker

Student Presentation

ROLLER COASTER

THURSDAY

STAFF HOST

SOCIAL EMOTIONAL LEARNING

GAMES

FUN!

ANNOUNCEMENTS

Deal or No Deal

Minute to Win It

Just Dance

Vocabulary Games

Skits

Trivia

Pictionary



If you're not making mistakes, then you're not doing anything. I'm positive that a doer makes mistakes.

(John Wooden)

izquotes.com

FIREWORK

FRIDAY

PICTURE SLIDE SHOW
STUDENT RECOGNITION
ANNOUNCEMENTS

Bus Awards
Staff Awards
Leadership Awards

SPARKLER

GETTING STARTED

- Establish a schedule for Morning Meeting
- Consider the space and setup for the meeting
- Choose and teach signals you will use consistently
- Carefully teach and reteach routines
- Start simple and increase complexity
- Purposefully plan
- Share responsibility in Morning Meeting

ESTABLISH A SCHEDULE

Monthly Theme

- Social Emotional Learning
- Character Traits

Weekly Plan

- Pattern for the week

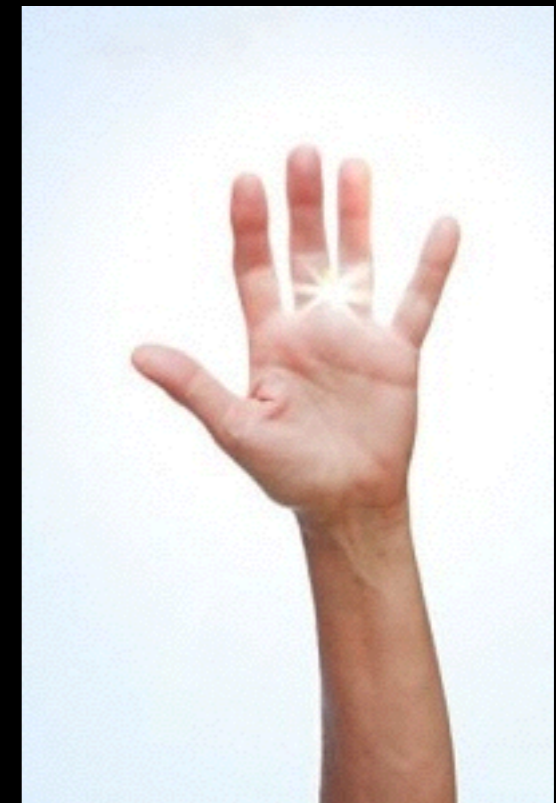
Daily routine

- Claps, routines, daily agenda

Signals



[5, 4, 3, 2, 1]



TEACH AND RETEACH ROUTINES

Positive Reinforcement

tickets

school economy

Reteach

After vacations

Student led

PURPOSEFUL PLANNING

Google Doc

- Announcements
- Host sign-up calendar
- Daily Plans

Keynote

Slides to include music and expectations

Keep the meeting moving

Morning Meeting Expectations

Leave all belongings at a table or in your locker

Sit in rows

Be ready to participate

HAVE FUN!!



SHARING RESPONSIBILITY

Staff

- Announcements

- Lead a game

- Judge and participate in games

- Share about their college

- Host a morning meeting

Students

- Announcements

- Create slide shows and Keynotes

- Participate in games

- Present about a college

- Host a morning meeting

QUESTIONS?





Robi Phinney

robi.phinney@bend.k12.or.us