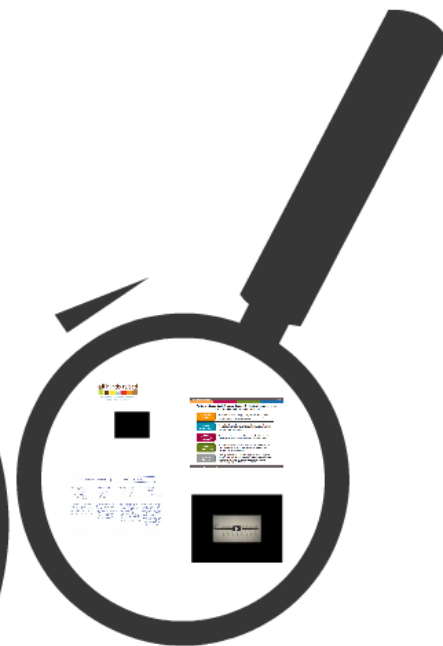




Go slow to go fast...

What if...

Working together to increase the number of students graduating from high school, continuing their education and training after high school, and ultimately beginning work in a career they find meaningful



Early Learning & Wellness

- Timeline of prenatal care
- Targeted social programs for disadvantaged, low-income families and populations
- Children receive appropriate care and support after entering elementary kindergarten
- Children receive appropriate social-emotional education
- Children attend or attend local prekindergarten, kindergarten, or early childhood school
- Children receive needed social-emotional support
- Children attend or attend local prekindergarten, kindergarten, or early childhood school
- Children attend or attend local prekindergarten, kindergarten, or early childhood school

Supporting Families

- Connectivity: Children have frequent face-to-face interactions with parents
- Child protection: Home care programs, quality child care, and community resources
- Child protection: High-quality child care and prekindergarten/elementary school
- Child protection: High-quality child care and prekindergarten/elementary school
- Child protection: High-quality child care and prekindergarten/elementary school

Bridges

- Multiple school clusters, field sites, and networks are identified
- Multiple school clusters, field sites, and networks are identified
- Multiple school clusters, field sites, and networks are identified
- Multiple school clusters, field sites, and networks are identified
- Multiple school clusters, field sites, and networks are identified

Education/Training to Career

- Business, nonprofits, government agencies, and education partners collaborate to support the pathway
- Business, nonprofits, government agencies, and education partners collaborate to support the pathway
- Business, nonprofits, government agencies, and education partners collaborate to support the pathway
- Business, nonprofits, government agencies, and education partners collaborate to support the pathway
- Business, nonprofits, government agencies, and education partners collaborate to support the pathway

Better Together

Central Oregon Reaching Higher

Resources Followed Collective Vision

- Oregon Diversity Foundation
- OREGON DIVERSITY FOUNDATION
- OREGON DIVERSITY FOUNDATION
- OREGON DIVERSITY FOUNDATION
- OREGON DIVERSITY FOUNDATION

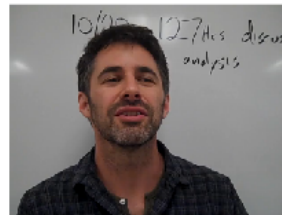
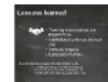
Strategies & Initiatives

- Healthy Families and Supported Families:** Connects high-quality early care and education with other services to support the child development of a child.
- Future Accounts:** Provides an early college savings account for all children.
- Ready for Kindergarten:** Identifies the opportunity gaps for young children and provides supports to address them.
- Early Learning Milestones:** Connects parents with resources and support.
- Health & Development on Track:** Provides resources to parents and providers to ensure children are healthy and ready to learn.
- Bridge:** Connects schools, families, and community organizations to support the pathway.
- Education/Training to Career:** Provides resources to support the pathway.
- Early Learning Milestones:** Connects parents with resources and support.
- Health & Development on Track:** Provides resources to parents and providers to ensure children are healthy and ready to learn.

Cascades Commitment

Creating a path to higher education

A VISION of accessibility and equity. A clear path for ALL central Oregon high school students.



MR. WORRY

By High School



- Are we working ourselves out of job?
- Will the quality and integrity of curriculum and instruction suffer?
- Are we blurring the lines between high school and college inappropriately?





Better Together

Central Oregon Reaching Higher

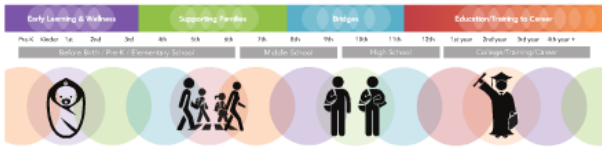
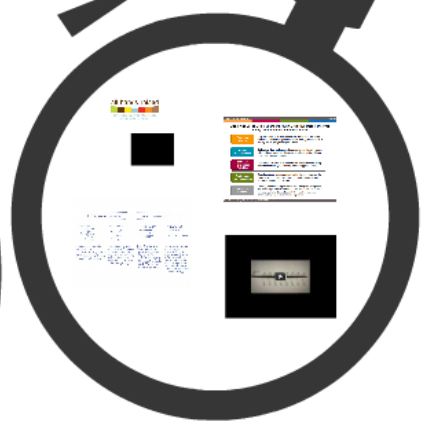


Better Together

Central Oregon Reaching Higher

Go slow to go fast...

What if...



- Shared Outcome Measures**
- Early Learning & Wellness**
 - Supporting children & families 0-5 to 8
 - The absence of parental care
 - Young children (0-5) to kindergarten are in quality early learning environments
 - Children have access to a primary care medical provider
 - Children receiving regular health and developmental screening before entering kindergarten
 - Disparities in kindergarten readiness are reduced
 - Families access evidence-based parenting education information, materials and/or classes
 - Children meet or exceed 3rd grade reading standards
 - Supporting Families**
 - Empowering families with information and long-term resources
 - Community of tribes from their local food and housing providers
 - Self-providers have a guaranteed high school education or equivalent
 - All grades regularly attend school
 - Families access post-high school information and resources
 - Families feel safe and welcome at their children's school
 - Families are involved in community-based activities
 - Bridges**
 - Linking vulnerable periods to ensure long-term student success
 - Middle school students feel safe and welcome at their school
 - All grades are on track to graduate
 - All grades are enrolled for high school graduate
 - All grades regularly attend school
 - All grades linked to mentor
 - Youth remain connected with school during and after graduation when
 - Students take 2+ college level courses before the end of high school
 - Students are ready for college level coursework
 - Students passed their fall to fall college
 - Education/Training to Career**
 - Aligning educational experiences and skills with career opportunities
 - Students, non-profits, government agencies actively seek and bring skills to the marketplace
 - Students engage in career exploration opportunities while in high school or post-secondary training college
 - Students complete a Career and Technical Education (CTE) program in high school or college



Better Together has organized into regional, cross-sector, **collaborative workgroups** along the cradle to career continuum. These efforts aim to increase student success by promoting a growth mindset, aligning and leveraging existing resources and developing specific, **innovative, data-driven initiatives.**



Strategies & Initiatives



A VISION of accessibility and equity. A clear path for ALL central Oregon high school students.

MR. WORRY



- worries and fears of partners**
- Are we working ourselves out of job?
 - Will the quality and integrity of curriculum and instruction suffer?
 - Are we blurring the lines between high school and college inappropriately?



Oregon Community Foundation
 OREB (RAC, Eastern Promise, Early Learning Hub)
 Local Foundations
 Corporation for National Service (AmeriCorps VISTA)

Partners: Educators, K-12 school districts, High School ESD, COCC, OSU-Cascades & Chem Campus, Deschutes Family Child Care, Early Learning Networks, Community Agencies, Nonprofits & Foundations



Working together to **increase** the number of students **graduating** from high school, continuing their **education** and **training** after high school, and ultimately beginning work in a **career** they find **meaningful**.

all hands raised



Education, Equity and Excellence
from Cradle to Career



StriveTogether

Every child. Cradle to career.



StriveTogether

YouTube

OLD/CURRENT BEHAVIOR

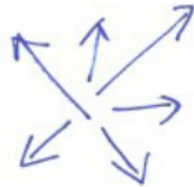
NEW BEHAVIOR

DISORDER +
CONFUSION



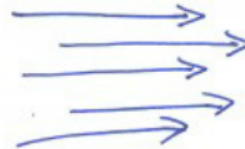
Inconsistent quality and sporadic accountability perpetuate poor results with some pockets of excellence.

ISOLATION



Individual pockets of excellence operate disconnected from one another with little ability to scale results. "Everyone for everything."

ALIGNMENT



Shared ideas and goals begin to galvanize partners and shared aspirations inspire repurposed budgets and "random acts of partnership"

COLLECTIVE IMPACT



Collaborative action rooted in shared responsibility and accountability using aligned budgets; work plans and measurements are understood by all partners and the community.

Achieving Large-Scale Change through Collective Impact Involves 5 Key Conditions for Shared Success

Common Agenda

All participants have a **shared vision for change** including a common understanding of the problem and a joint approach to solving it through agreed upon actions

Shared Measurement

Collecting data and measuring results consistently across all participants ensures efforts remain aligned and participants hold each other accountable

Mutually Reinforcing Activities

Participant activities must be **differentiated while still being coordinated** through a mutually reinforcing plan of action

Continuous Communication

Consistent and open communication is needed across the many players to build trust, assure mutual objectives, and appreciate common motivation

Backbone Support

Creating and managing collective impact requires a separate organization(s) with staff and a specific set of skills to **serve as the backbone for the entire initiative and coordinate participating organizations and agencies**



YouTube

Early Learning & Wellness

Supporting Families

Bridges

Education/Training to Career

Pre-K Kinder 1st 2nd 3rd 4th 5th 6th 7th 8th 9th 10th 11th 12th 1st year 2nd year 3rd year 4th year +

Before Birth / Pre-K / Elementary School Middle School High School College/Training/Career



Shared Outcome Measures

Early Learning & Wellness

Supporting children & families
Birth to 8

- Timeliness of prenatal care
- Young children (birth to kindergarten) are in quality early learning environments
- Children have access to a primary care medical provider
- Children receive regular health and developmental screening before entering Kindergarten
- Disparities in Kindergarten readiness are reduced
- Families access evidence-based parenting education information, materials and/or classes
- Children meet or exceed 3rd grade reading standards

Supporting Families

Empowering families with information
and long-term resources

- Elementary children have their basic food and housing needs met
- 3rd graders have a growing post-high school education savings account
- 6th graders regularly attend school
- Families access post-high school information and resources
- Families feel safe and welcome at their children's school
- Families are involved in community-based activities

Bridges

Bridging vulnerable periods to ensure
long-term student success

- Middle school students feel safe and welcome at their school
- 8th graders are math proficient
- 9th graders are on-track for high school graduation
- 9th graders regularly attend school
- 9th graders linked to mentor
- Youth remain connected with school during and after disciplinary action
- Students take 3+ college level courses before the end of high school
- Students are ready for college-level coursework
- Students persist from fall to fall in college

Education/Training to Career

Aligning educational experiences and
skills with career opportunities

- Businesses, non-profits, government agencies actively host youth and young adults in internships and jobs
- Students engage in career exploration opportunities while in high school or post-secondary training/college
- Students complete a Career and Technical Education (CTE) program in high school or college



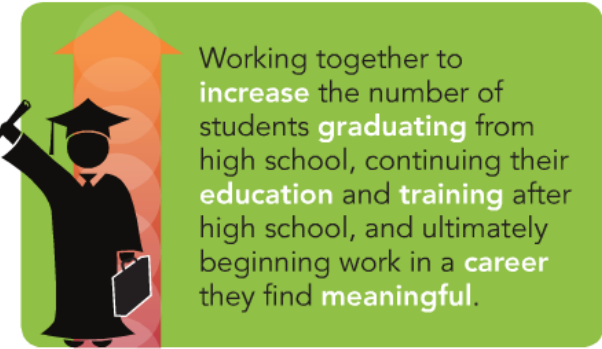
Better Together

Central Oregon Reaching Higher



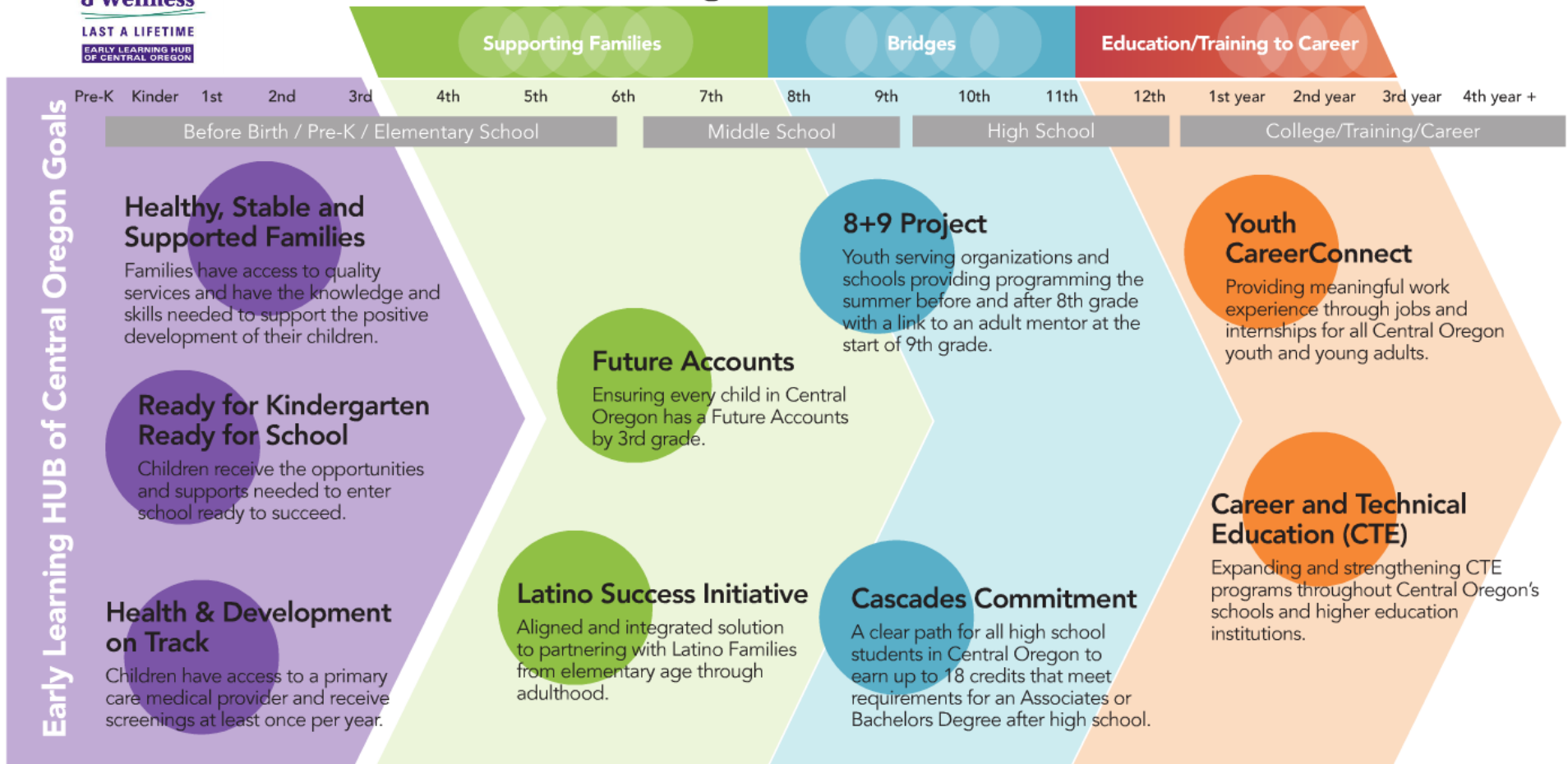
LAST A LIFETIME
EARLY LEARNING HUB
OF CENTRAL OREGON

Better Together has organized into regional, cross-sector, **collaborative workgroups** along the cradle to career continuum. These efforts aim to increase student success by promoting a growth mindset, aligning and leveraging existing resources and developing specific **innovative, data-driven initiatives**.



Working together to **increase** the number of students **graduating** from high school, continuing their **education and training** after high school, and ultimately beginning work in a **career** they find **meaningful**.

Strategies & Initiatives



Partners: Education (K-12 school districts, High Desert ESD, COCC, OSU-Cascades & Open Campus) • Business /Service Clubs • Early Learning Professionals • Government Agencies • Nonprofits & Foundations



Resources Followed Collective Vision



Oregon Community Foundation
OEIB (RAC, Eastern Promise, Early Learning Hub)
Local Service Plan
Local Foundations
Corporation for National Service (AmeriCorps VISTA)

Cascades Commitment

A clear path for all high school students in Central Oregon to earn up to 18 credits that meet requirements for an Associates or Bachelors Degree after high school.



Cascades Commitment

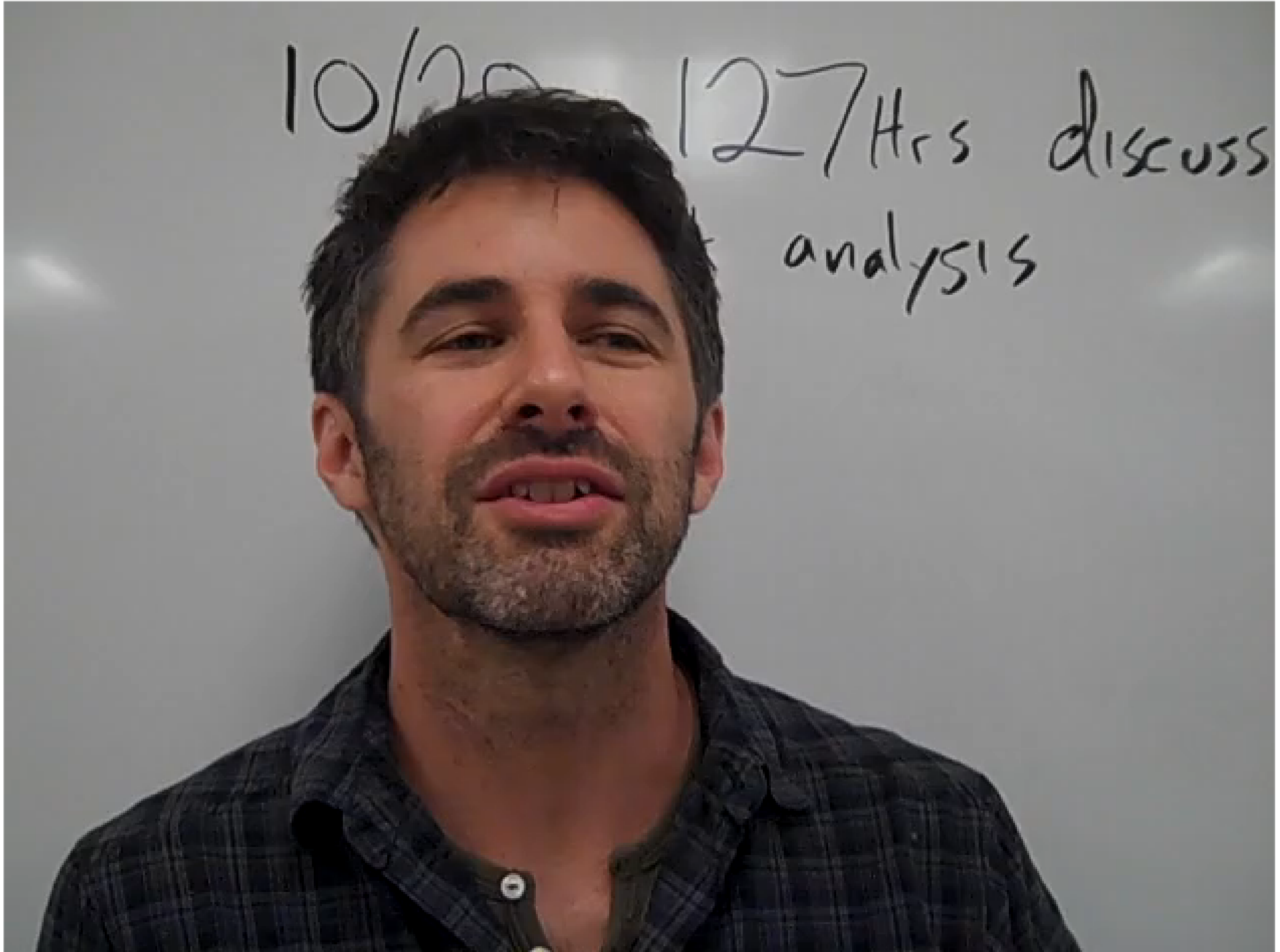
Creating a path to higher education

A VISION of accessibility and equity. A clear path for ALL central Oregon high school students.



Working together to **increase** the number of students **graduating** from high school, continuing their **education** and **training** after high school, and ultimately beginning work in a **career** they find **meaningful**.

10/20 127 Hrs discuss
analysis



MR. WORRY

By Roger Hargreaves



worries and fears of partners

- Are we working ourselves out of job?
- Will the quality and integrity of curriculum and instruction suffer?
- Are we blurring the lines between high school and college inappropriately?

Lessons learned



- Trusting relationships are **ESSENTIAL**
- Institutional cultures are real and
- demand respect
- Language matters

Never underestimate the importance of...

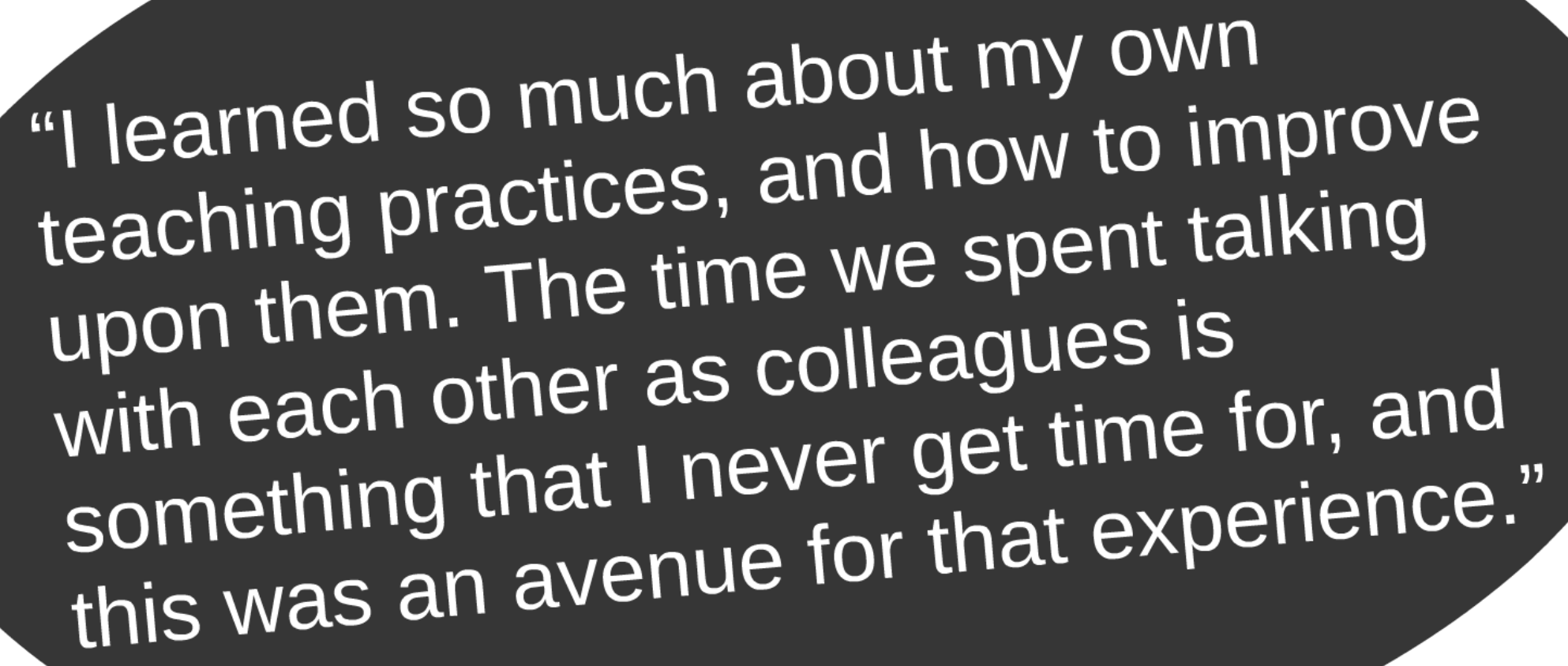
- An entity serving as a conduit for resources
- A leader to orchestrate siloed systems and providing the connective tissue between them

"Collaboration & idea generation. Sharing techniques and papers to get a sense of what's possible and how to best serve students in a changing educational landscape."

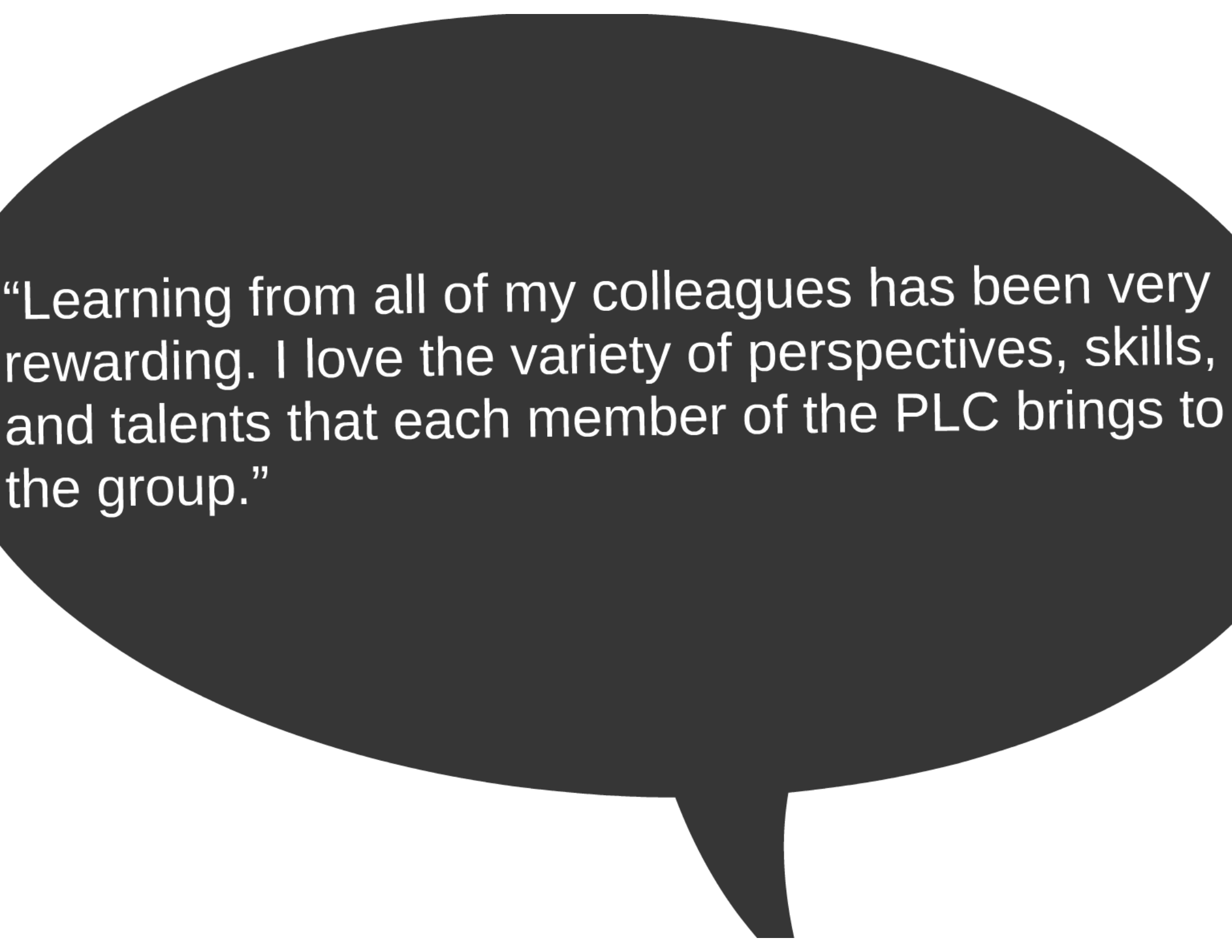
"I learned so much about my own teaching practices, and how to improve upon them. The time we spent talking with each other as colleagues is something that I never get time for, and this was an avenue for that experience."

"Learning from all of my colleagues has been very rewarding. I love the variety of perspectives, skills, and talents that each member of the PLC brings to the group."

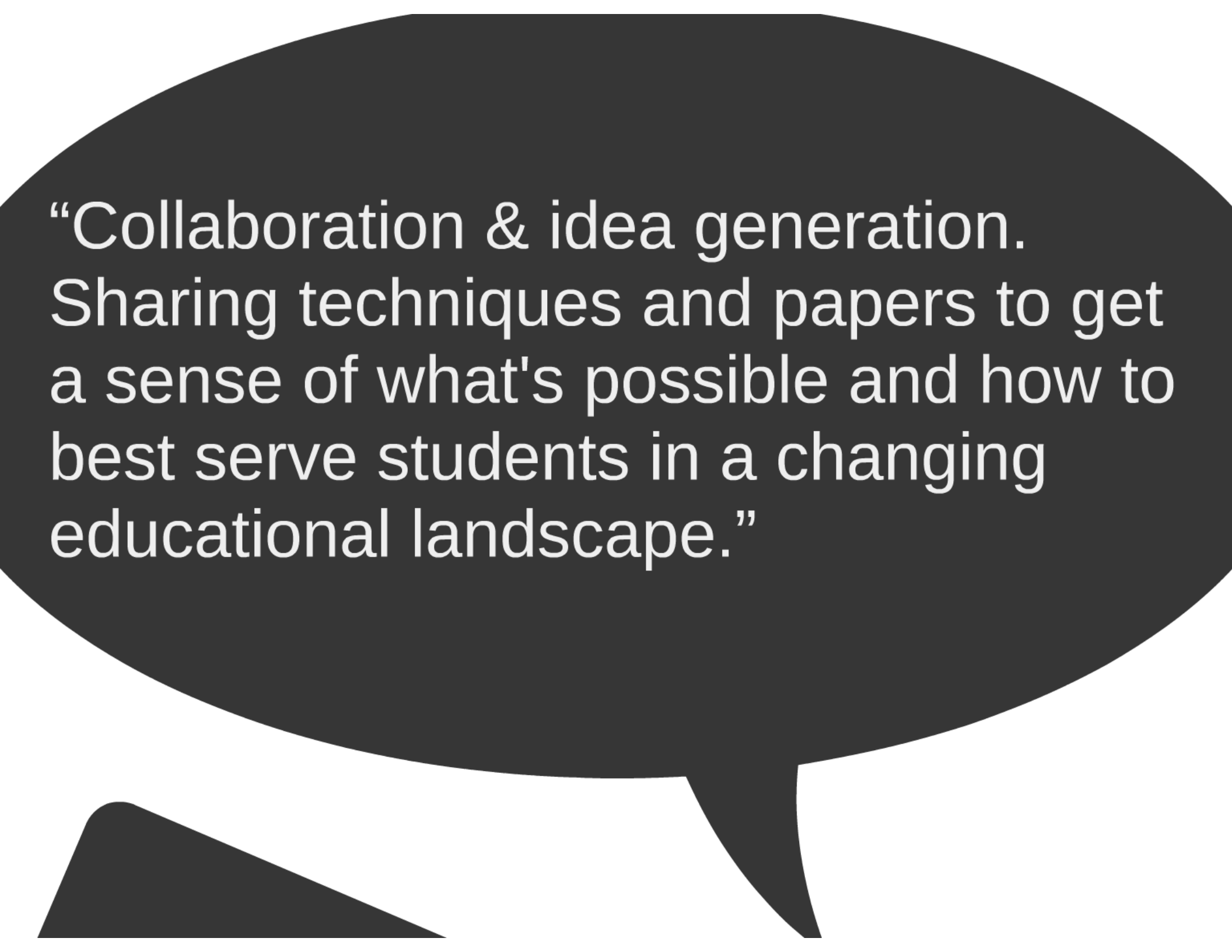




“I learned so much about my own teaching practices, and how to improve upon them. The time we spent talking with each other as colleagues is something that I never get time for, and this was an avenue for that experience.”



“Learning from all of my colleagues has been very rewarding. I love the variety of perspectives, skills, and talents that each member of the PLC brings to the group.”



“Collaboration & idea generation.
Sharing techniques and papers to get
a sense of what's possible and how to
best serve students in a changing
educational landscape.”





Better Together

Central Oregon Reaching Higher

Go slow to go fast...